

Electronic Supplementary Information for

**Enhanced Nucleation of Polypropylene by Metal Organic Frameworks (MOFs)
based on Aluminium Dicarboxylates: Influence of Structural Features**

Mohan Raj Mani,^{ab} Ramesh Chellaswamy,^{*ab} Yogesh N. Marathe^{ab}

and Vijayamohanan K. Pillai^{bc}

^aPolymer Science and Engineering Division, Polymers and Advanced Materials Laboratory,
CSIR-National Chemical Laboratory, Dr. Homi Bhabha Road, Pune-411 008, India.

^bAcademy of Scientific and Innovative Research (AcSIR) New Delhi 110 025, India

^cCSIR-Central Electrochemical Research Institute, Karaikudi-630006, India.

Email: c.ramesh@ncl.res.in

Section	Name	Page No.
S1	DSC melt crystallization thermograms (cooling cycle) of pristine iPP and iPP nucleated with 2000ppm of various nucleating agents (indicated in the graph)	2
S2	WAXS patterns of iPP (unnucleated) and nucleated with Al-dicarboxylates (indicated in the graph)	3
S3	FT-IR spectra of Al-dicarboxylates (indicated in the graph)	4
S4	Nitrogen sorption-desorption isotherm of Al-FumA	5
S5	Nitrogen sorption-desorption isotherm of Al-SucA	5
S6	Thermogravimetric analysis (TGA) of Al-dicarboxylates (indicated in the graph)	6
S7	Powder X-ray pattern of MOFs based on Al, Cr & Zr with suberates.	6
S8	Thermogravimetric analysis of Al, Cr and Zr suberates.	7

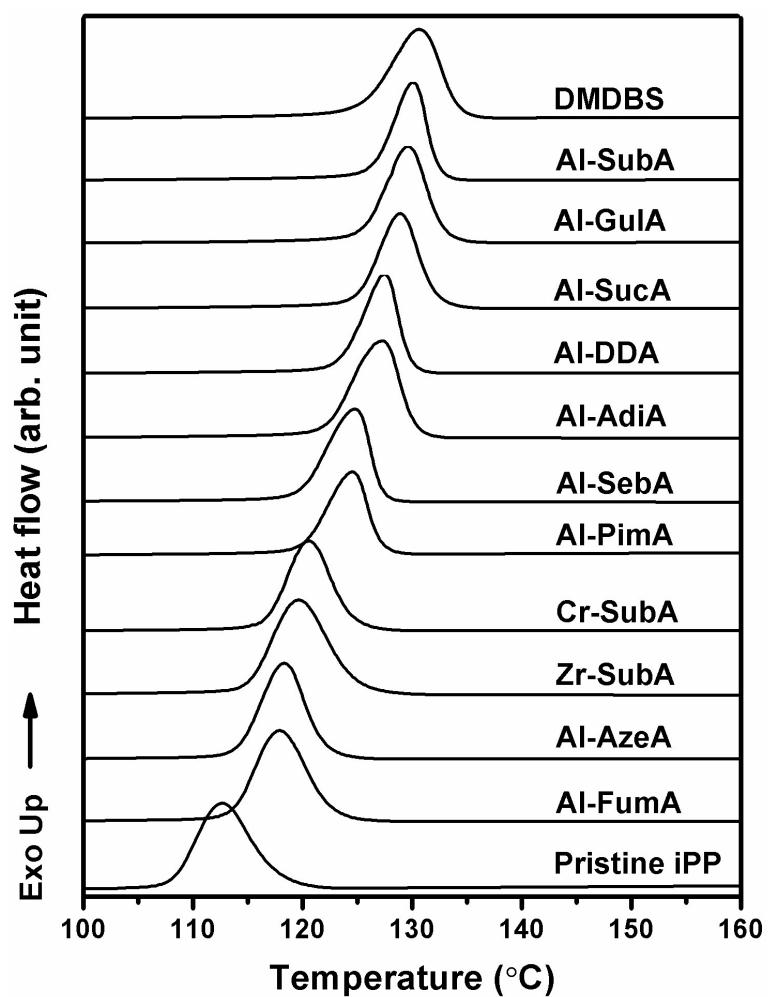


Figure S1. DSC melt crystallization thermograms (cooling cycle) of pristine iPP and iPP nucleated with 2000ppm of various nucleating agents (indicated in the graph).

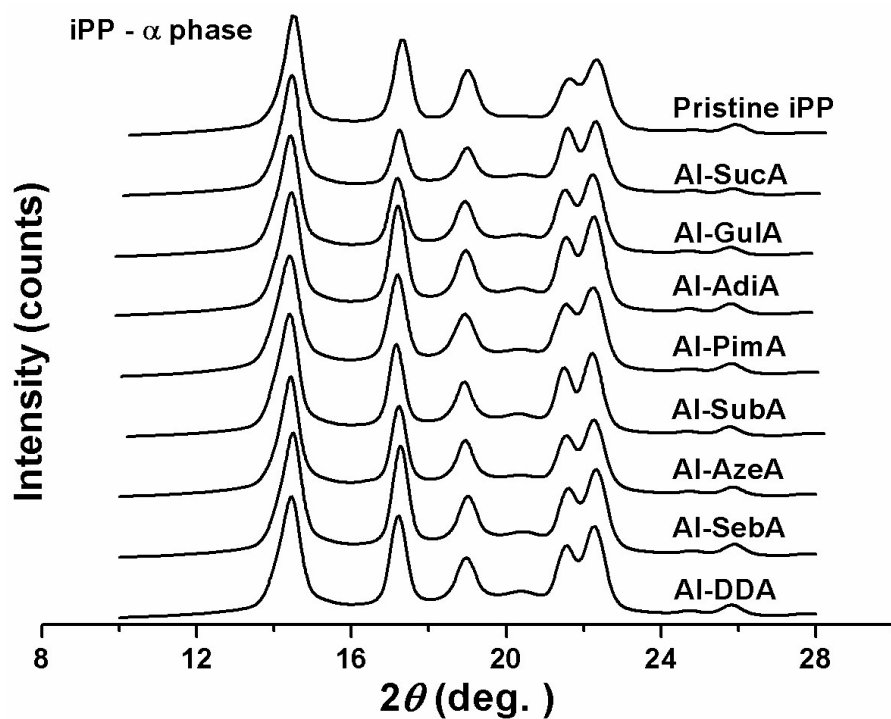


Figure S2. WAXS patterns of iPP (unnucleated) and nucleated with Al-dicarboxylates (indicated in the graph).

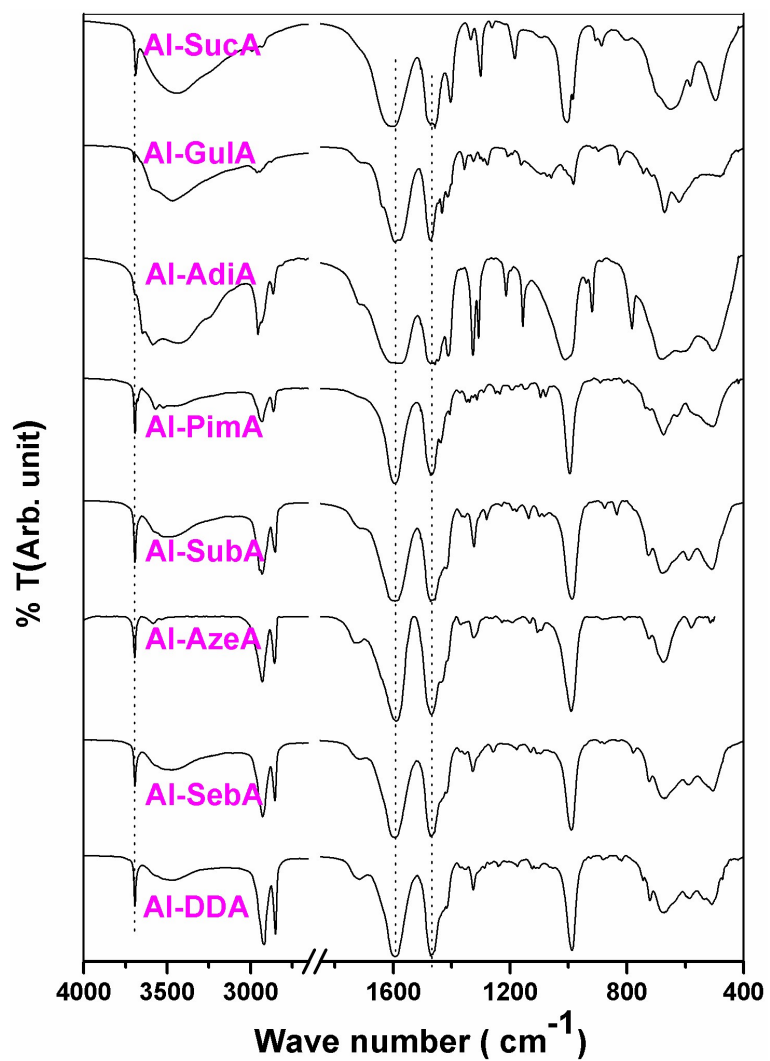


Figure S3. FT-IR spectra of Al-dicarboxylates (indicated in the graph).

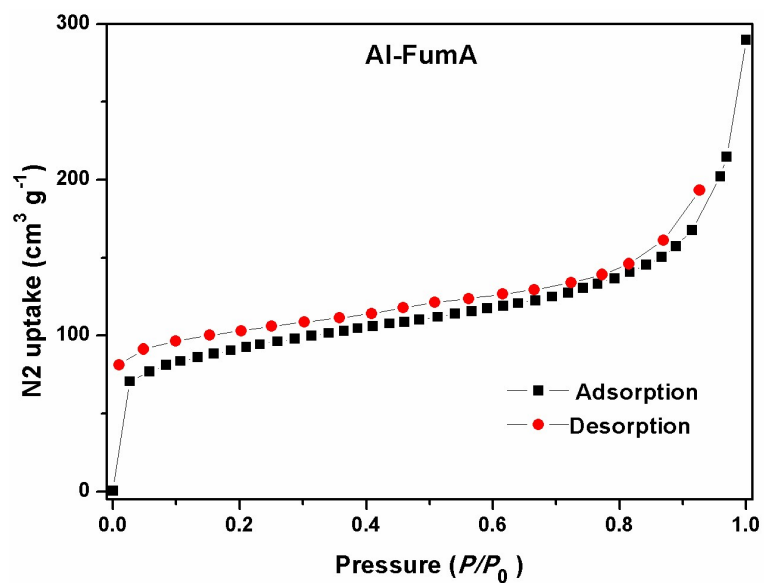


Figure S4. Nitrogen sorption-desorption isotherm of Al-FumA

S5

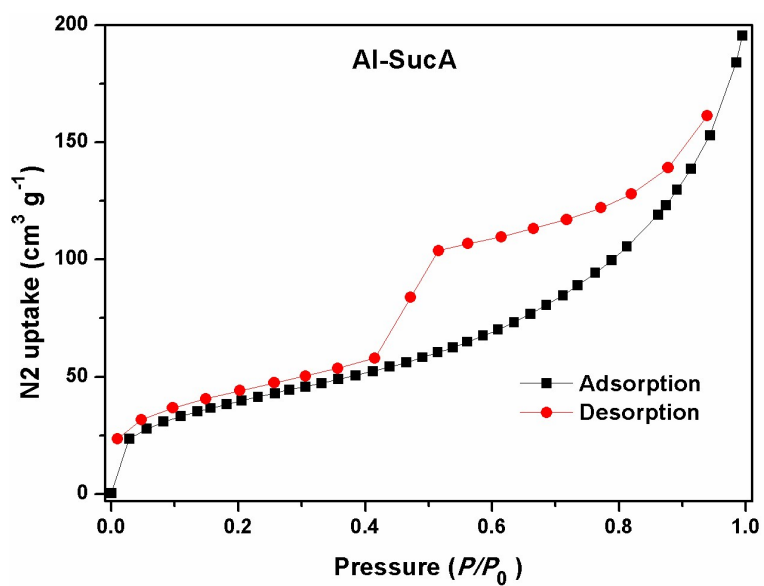


Figure S5. Nitrogen sorption-desorption isotherm of Al-SucA

S6

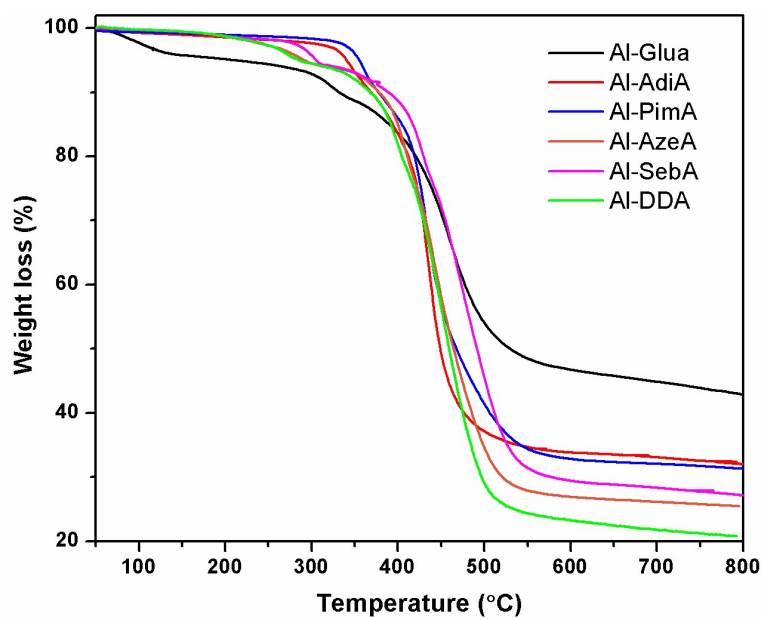


Figure S6. Thermogravimetric analysis (TGA) of Al-dicarboxylates (indicated in the graph)

S7

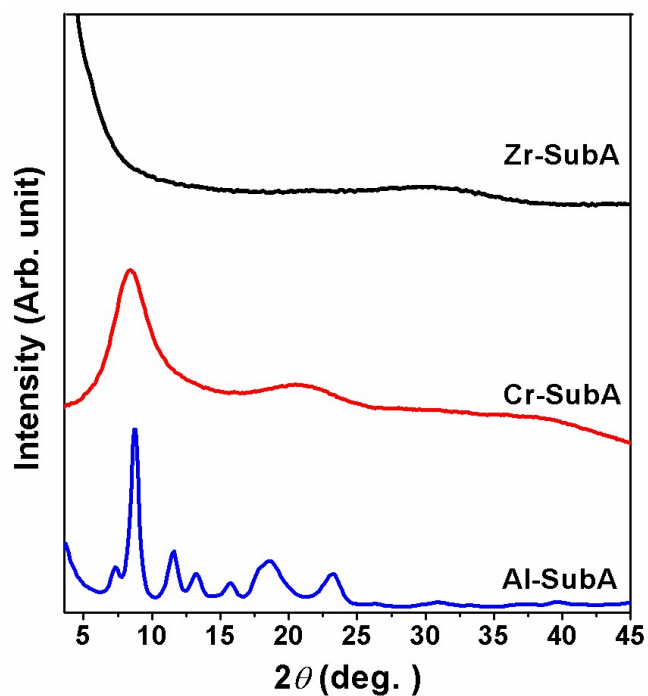


Figure S7. Powder X-ray pattern of MOFs based on Al, Cr & Zr with suberates.

S8

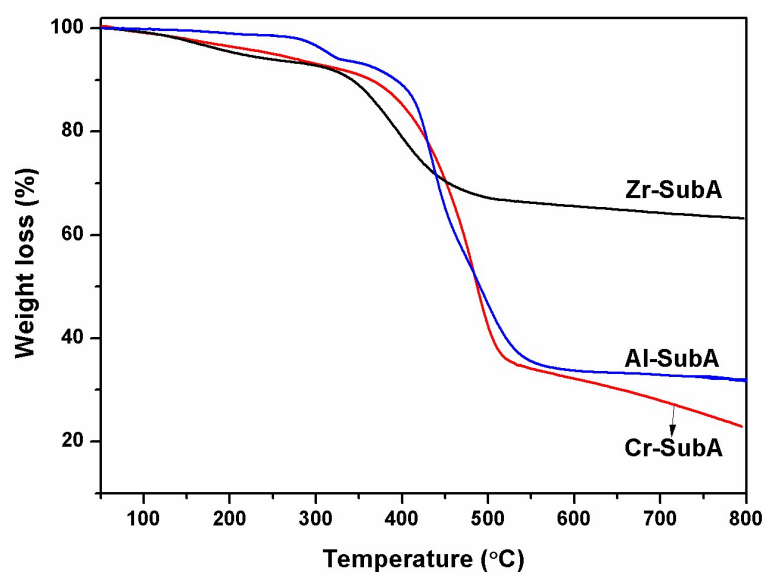


Figure S8. Thermogravimetric analysis of Al, Cr and Zr substrates.