

Fig. S1 AFM images and corresponding height profiles of G-*h*-BN

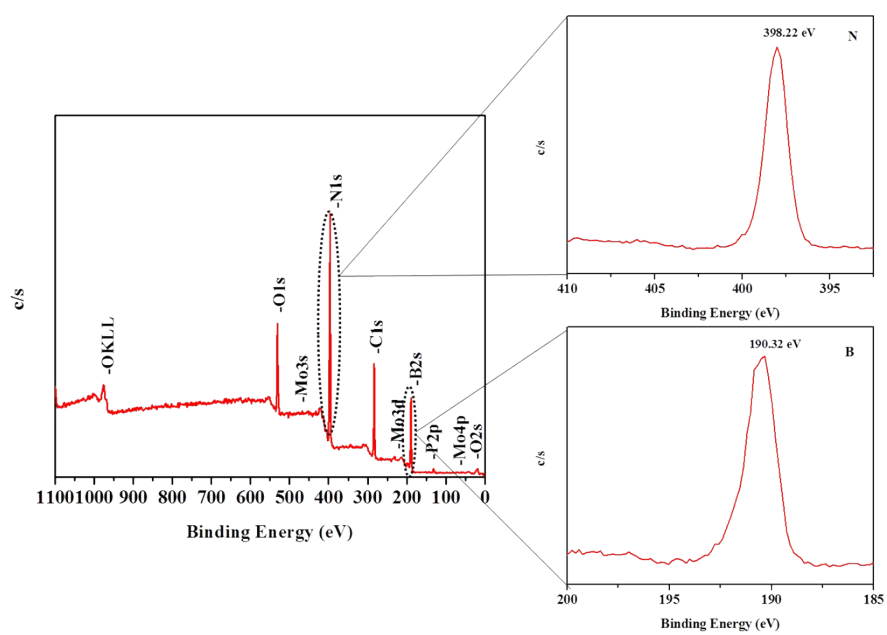


Fig.S2 XPS spectra of 20% PMo IL/G-h-BN

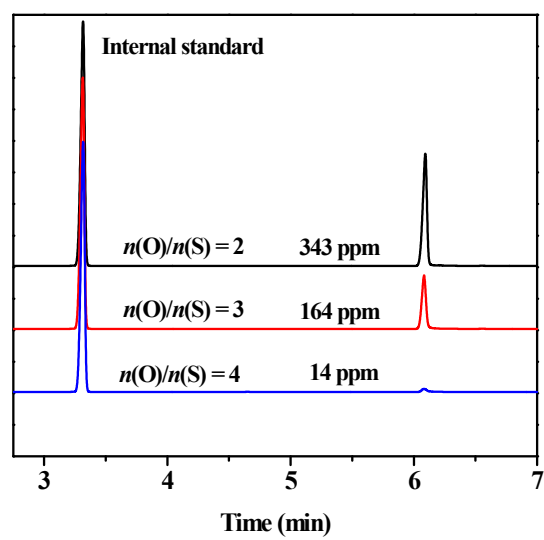


Fig. S3 Effects of the amount of H_2O_2 on sulfur removal

Reaction condition: $T = 60^\circ\text{C}$; $V(\text{oil}) = 5 \text{ mL}$; $m(\text{catalyst}) = 0.05 \text{ g}$; $t = 80 \text{ min}$