

Table S1: Instrumental LODs of DMFP, DEFP, TMP and TEP for LC-MS/MS and GC-MS.

Compound	LC-MS/MS		GC-MS	
	LOD [ppm]	R <sup>2</sup>	LOD [ppm]	R <sup>2</sup>
DMFP	1.4	0.998	1.7	0.999
DEFP	7.6	0.999	1.8	0.999
TMP	0.1	0.992	0.9	0.999
TEP	0.2	0.992	1.6	0.999

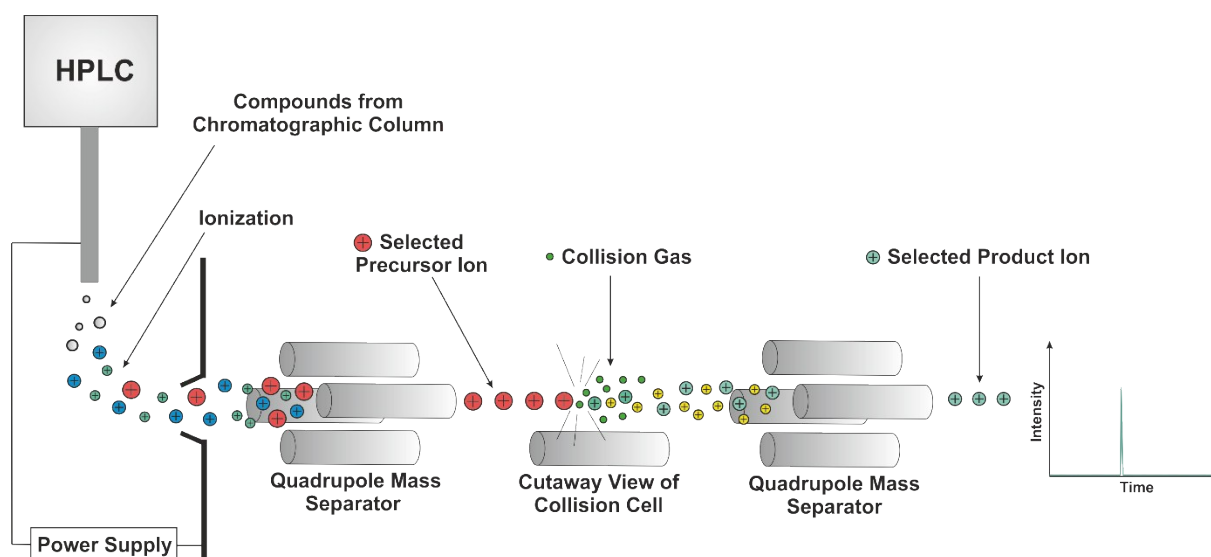


Figure S1: Schematic illustration of LC-MRM measurements.