

## Effect of Main Chain Conformation to Thermosensitivity in Elastin-Like Peptide-Grafted Polylysine

Chie Kojima<sup>1\*</sup>, Ugir Hossain Sk<sup>2§</sup>, Daichi Fukushima<sup>1</sup>, Kotaro Irie<sup>2</sup>, Naotoshi Akazawa<sup>3</sup>,

Masafumi Umeda<sup>3</sup>, Takuro Niidome<sup>3</sup>

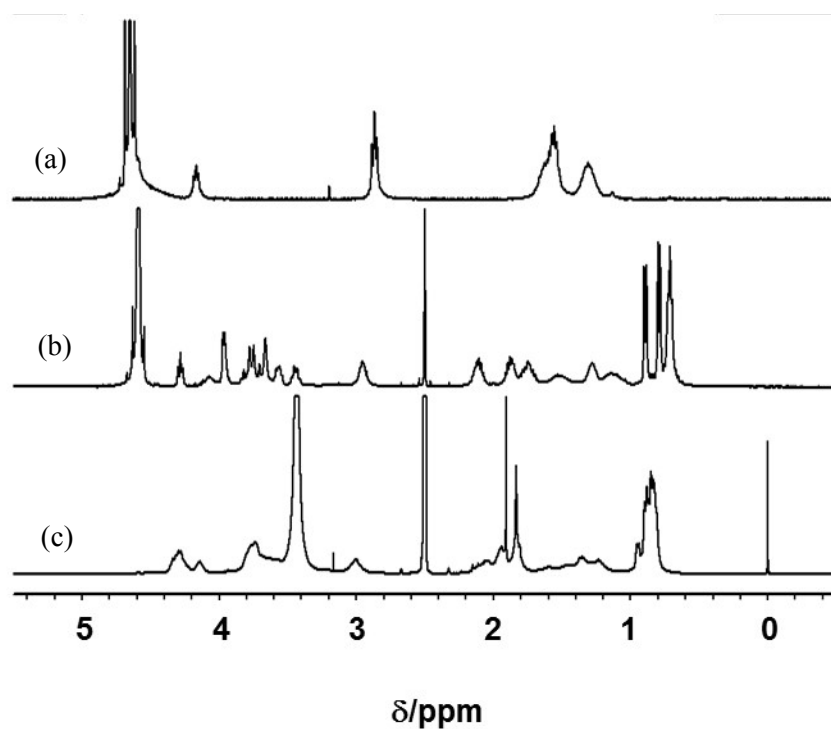


Figure S1. <sup>1</sup>H NMR spectra of PLL (a) and ELP-PLL (b) in D<sub>2</sub>O and Ac-ELP-PLL (c) in DMSO-d<sub>6</sub>.

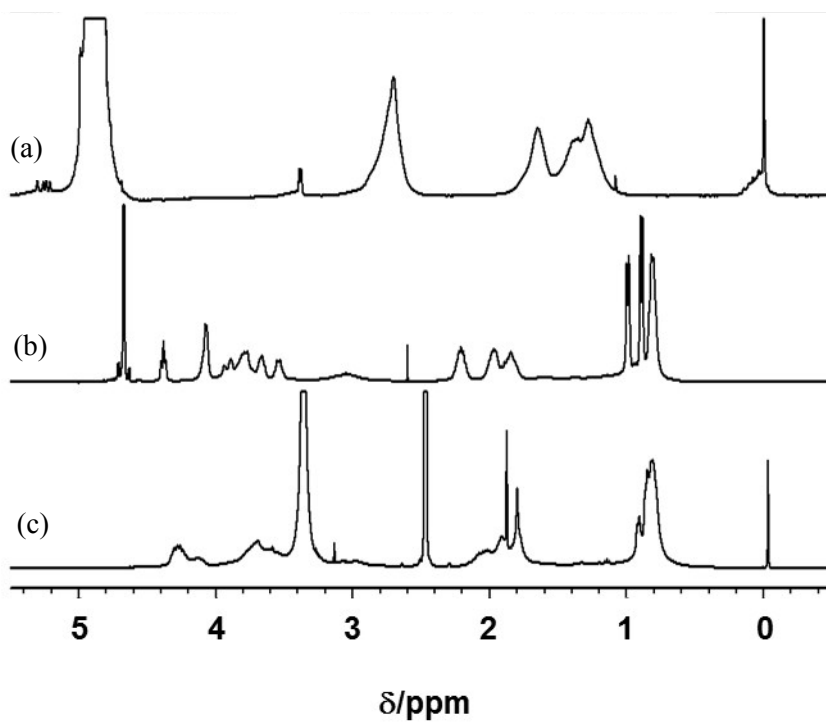


Figure S2.  $^1\text{H}$  NMR spectra of PAA-5k (a) and ELP-PAA-5k (b) in  $\text{D}_2\text{O}$  and Ac-ELP-PAA-5k (c) in  $\text{DMSO-d}_6$ .

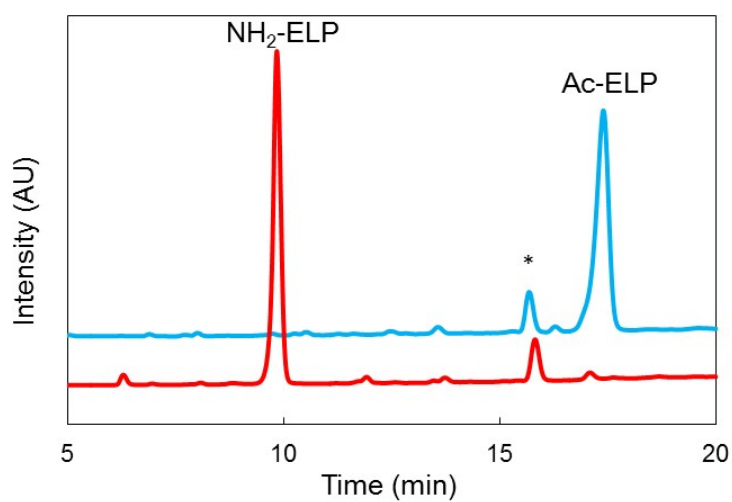


Figure S3. Chromatograms of Ac-ELP and  $\text{NH}_2$ -ELP in the reverse-phase HPLC analysis.

\*impurity.

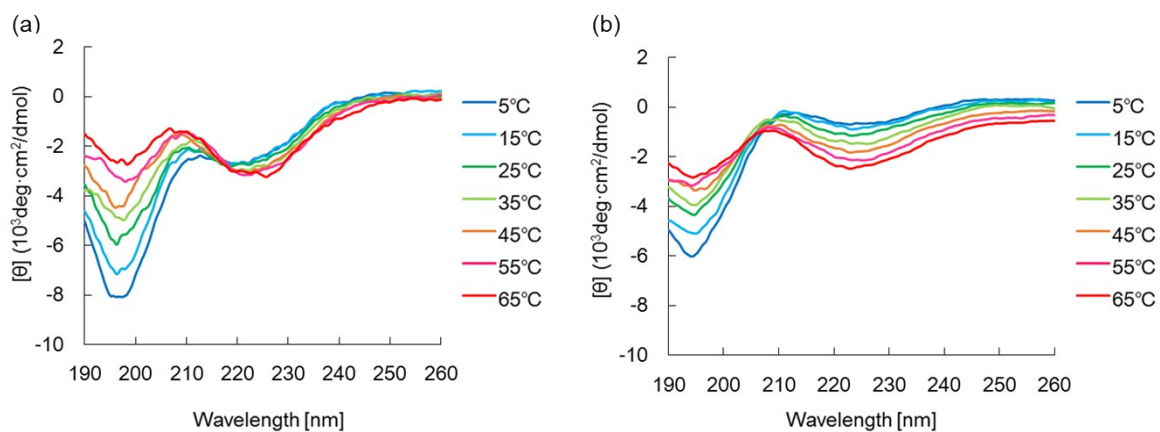


Figure S4. CD spectra of Ac-ELP-PAA-5k (a) and ELP-PAA-5k (b) in water.

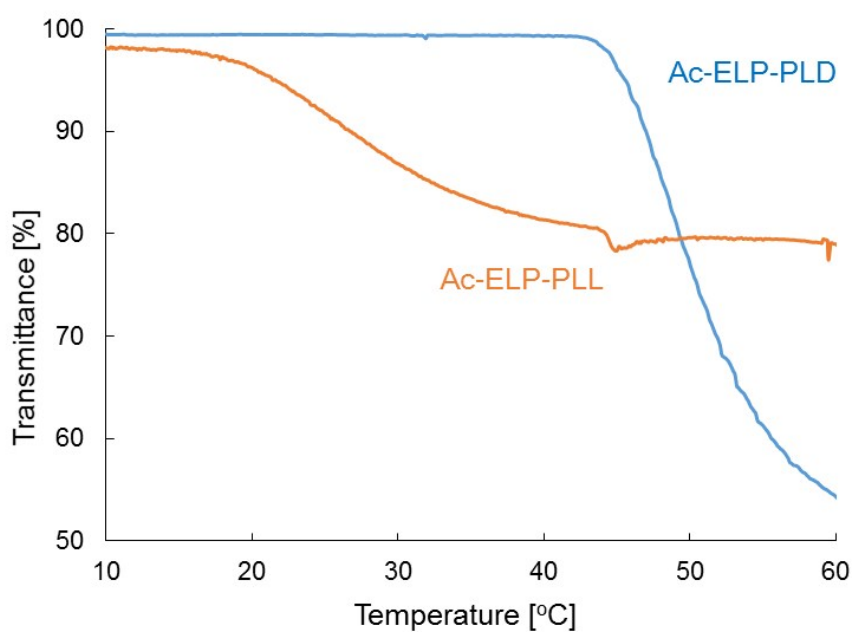


Figure S5. Temperature-dependent transmittance for solutions of the acetylated elastin-mimetic polymers in water (0.05 mg/ml).