

Supporting Information

Fluorescence Dye Loaded Nano-graphene for Multimodal Imaging Guided Photothermal Therapy

Pengfei Rong ^{1,2,3†}, Jianzhen Wu ^{1*†}, Zhiguo Liu ⁴, Xiaoqian Ma ¹, Lun Yu ⁴, Kechao Zhou ³,

Wenbin Zeng ⁴, Wei Wang ^{1*}

1. Department of Radiology, The Third Xiangya Hospital, Central South University, Changsha, Hunan 410013, China

2. Laboratory of Molecular Imaging and Nanomedicine (LOMIN), National Institute of Biomedical Imaging and Bioengineering (NIBIB), National Institutes of Health (NIH), Bethesda, Maryland 20892, United States

3. State Key Laboratory for Powder Metallurgy, Central South University, Changsha, Hunan, 410083, China

4 School of Pharmaceutical Sciences, Central South University, Changsha, 410013, PR China

Corresponding authors: wujianzhen66@163.com and cjr.wangwei@vip.163.com (W. Wang)

† Those authors contributed equally to this work.

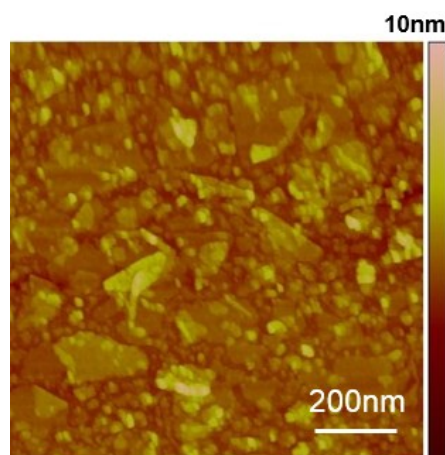


Figure S1 AFM image of GO

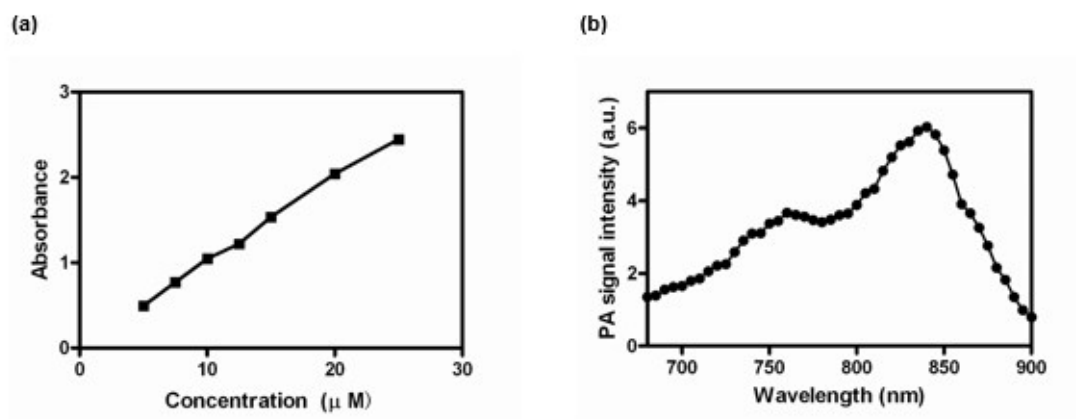


Figure S2 (a) Standard curve of CySCOOH. (b) PA spectra of GBFs.

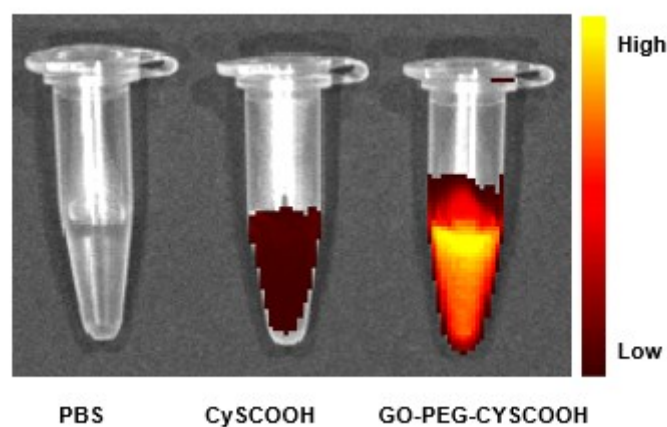


Figure S3 Heating image of PBS, CySCOOH, and GO-PEG-CySCOOH.

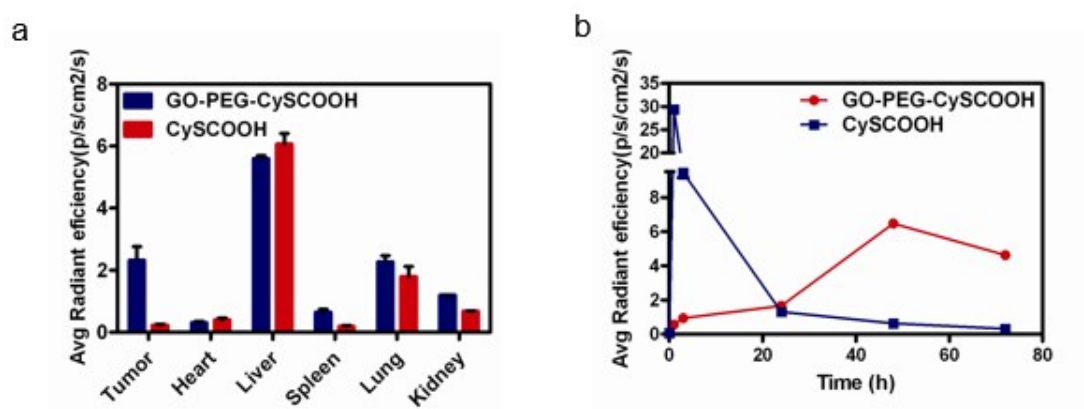


Figure S4 (a) Time-lapse FL signal change of tumors followed by intravenous injection of CySCOOH and GO-PEG-CySCOOH. (b) Biodistribution of free CySCOOH and GO-PEG-CySCOOH in 4T1 tumor-bearing nude mice at 24 h post-injection.

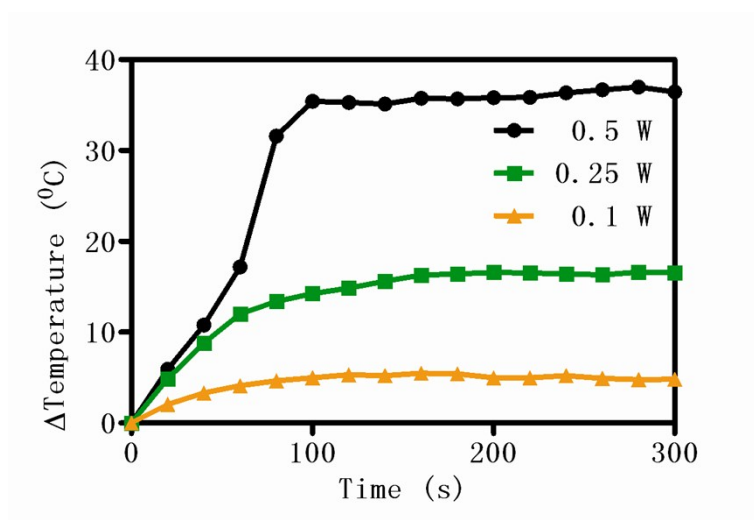


Figure S5 Heating curve of 15 ug/mL GO-PEG-CySCOOH under different power.