

[Type here]

Supplementary Figure:

Bio-degradation of Polyethylene Waste by Simultaneous Use of Two Bacteria: *Bacillus licheniformis* for production of Bio-surfactant and *Lysinibacillus fusiformis* for Bio-degradation.

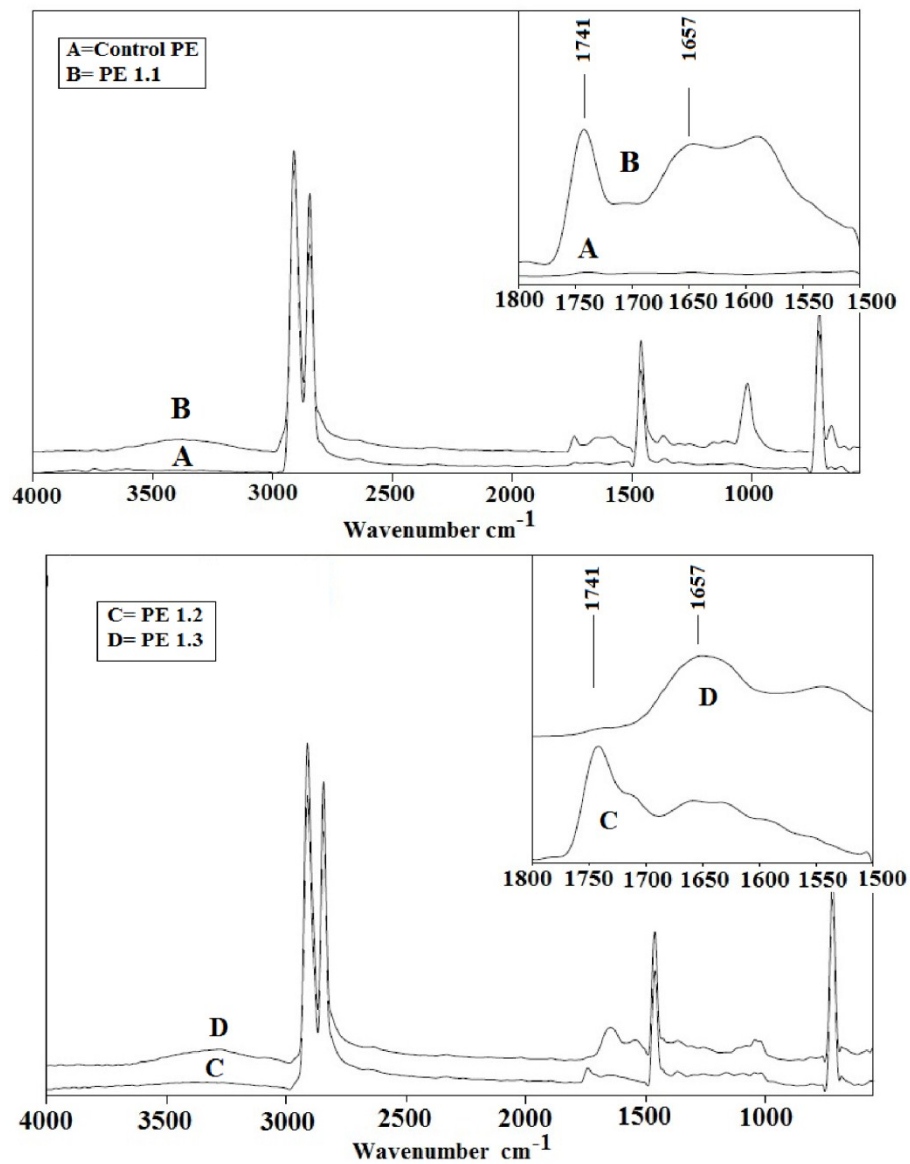
ShritamaMukherjee^a, UttamRoyChaudhuri^b, Patit P. Kundu^{a*}

^aAdvanced Polymer Laboratory, Department of Polymer Science and Technology, University of Calcutta, 92 APC Road, Kolkata-9, West Bengal, India. Email ID: ppk923@yahoo.com.

Telephone number: +913323525106

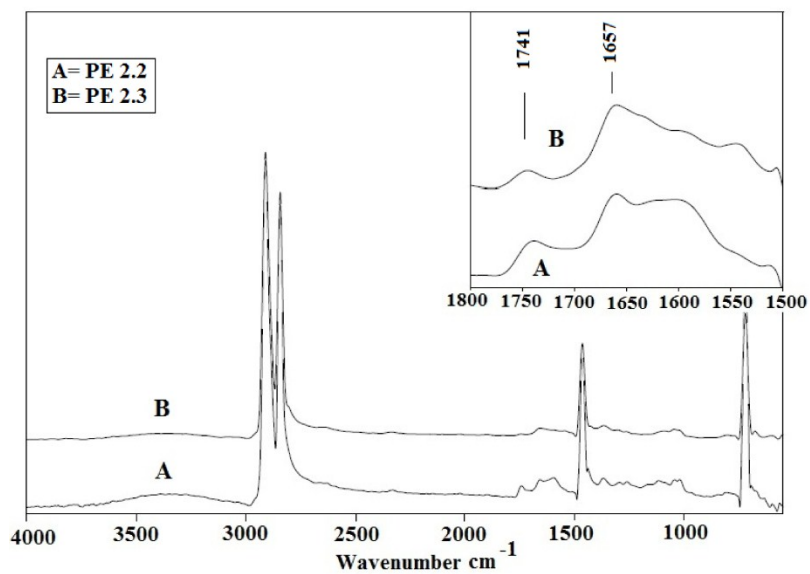
^bChemical Technology, University of Calcutta, 92 APC Road, Kolkata-9, West Bengal, India.

[Type here]

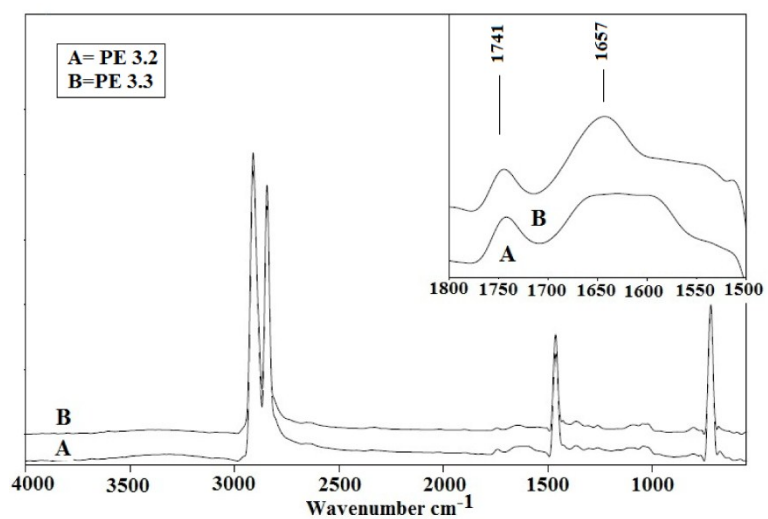


Supplementary Figure S1: Fourier transform infrared spectra of A-control polyethylene, B-PE 1.1, C-PE 1.2 , D- PE 1.3

[Type here]

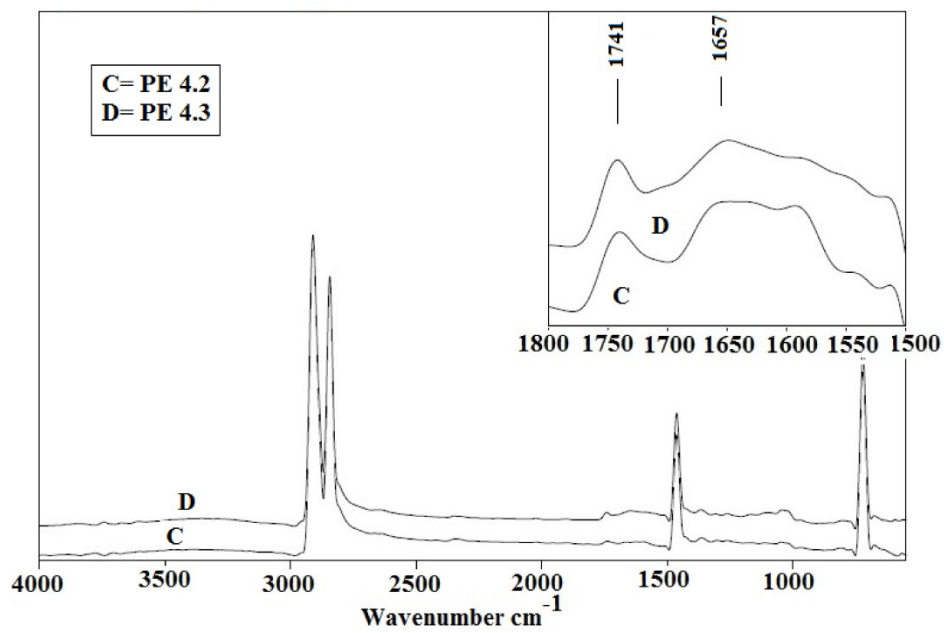
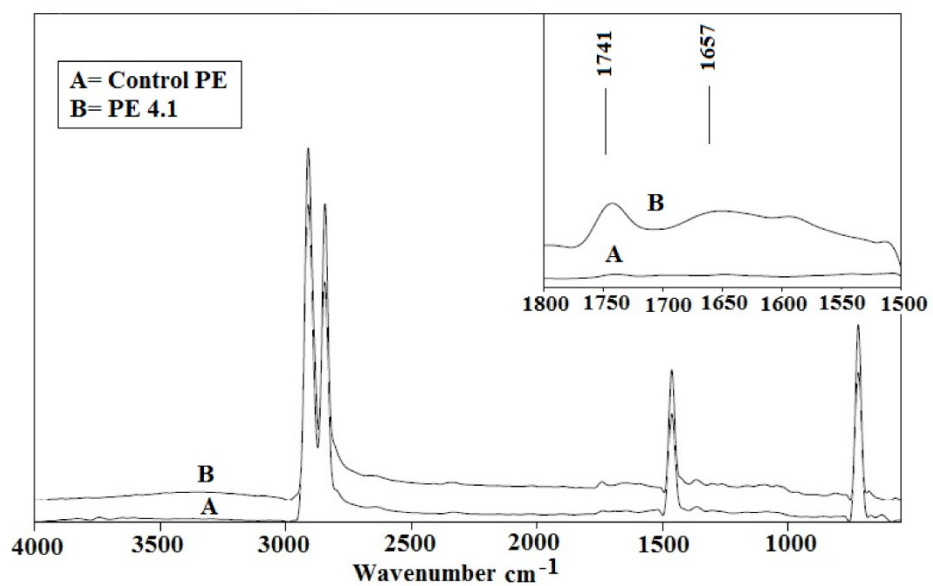


Supplementary Figure S2: Fourier transform infrared spectra of A- PE 2.2, B-PE 2.3



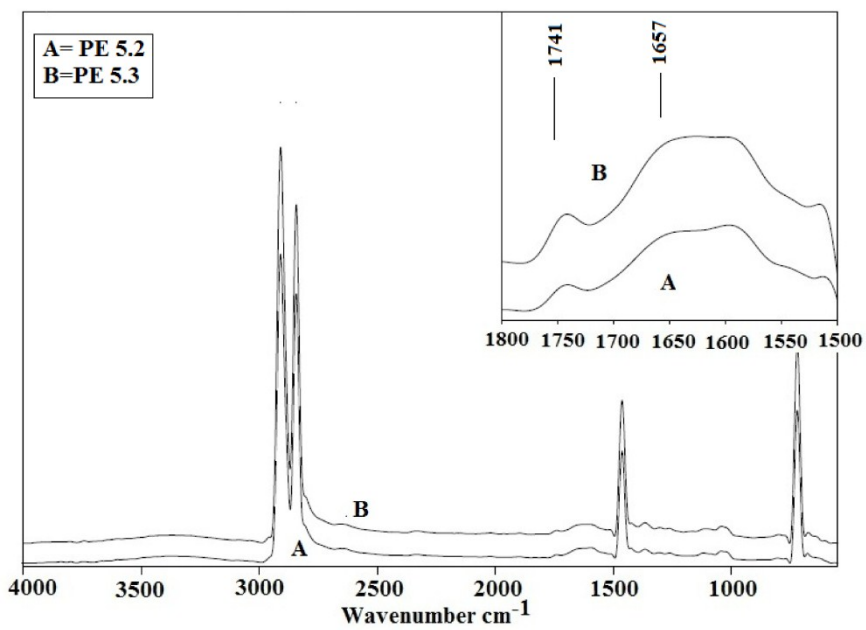
Supplementary Figure S3: Fourier transform infrared spectra of A- PE 3.2, B-PE 3.3

[Type here]



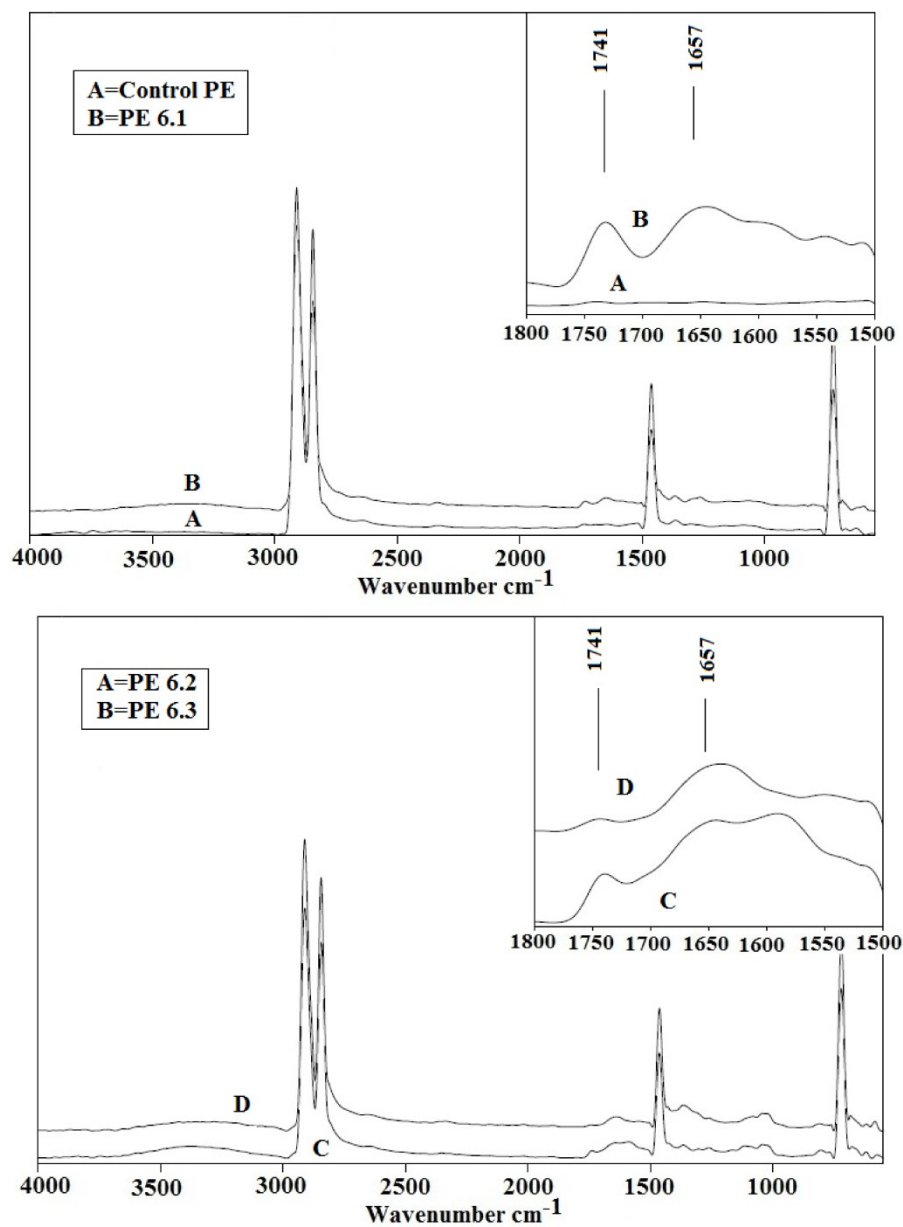
Supplementary Figure S4: Fourier transform infrared spectra of A-control PE, B-4.1, C-PE 4.2, D-PE 4.3

[Type here]



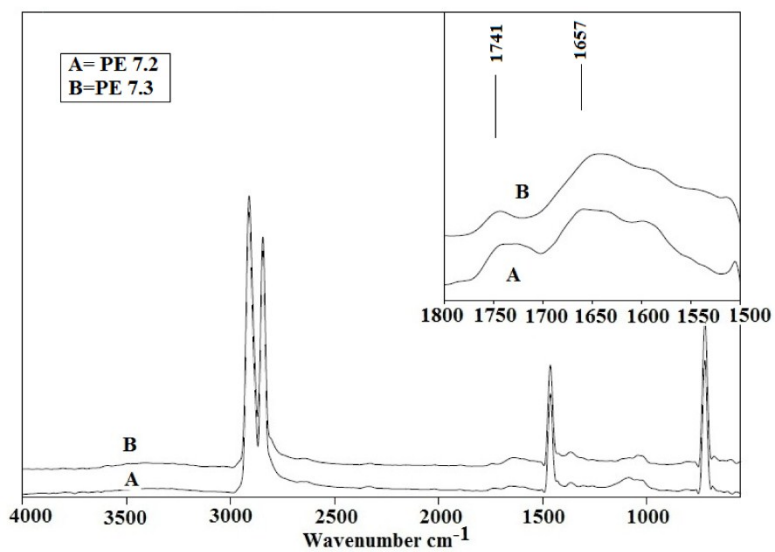
Supplementary Figure S5: Fourier transform infrared spectra of A: PE 5.2, B-PE 5.3

[Type here]

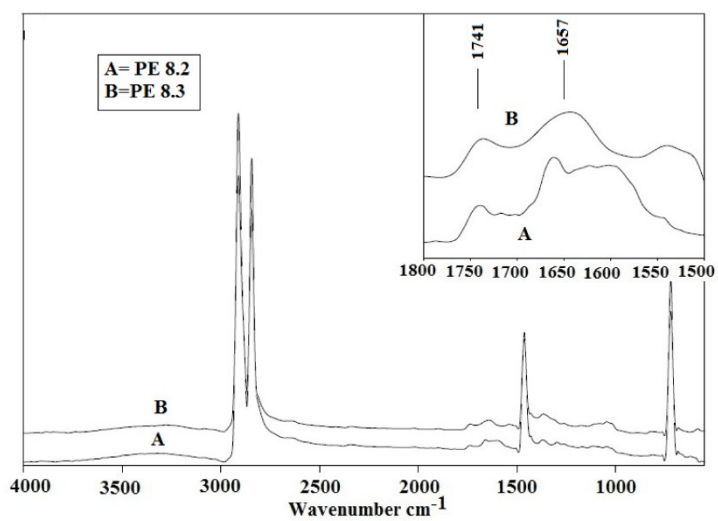


Supplementary Figure S6: Fourier transform infrared spectra of A-control polyethylene, B-PE 6.1, C-PE 6.2 , D- PE 6.3

[Type here]



Supplementary Figure S7: Fourier transform infrared spectra of A- PE 7.2, B-PE 7.3



Supplementary Figure S8: Fourier transform infrared spectra of A- PE 8.2, B-PE 8.3