

Supporting Information for

Hierarchical Mesoporous Silicas Templated by PE-*b*-PEO-*b*-PLA Triblock Copolymer for Fluorescent Drug-Delivery

Wei-Cheng Chu,^a Chien-Chen Cheng,^a Bishnu Prasad Bastakoti,^b and Shiao-Wei Kuo^{a,*}

*^aDepartment of Materials and Optoelectronic Science, National Sun Yat-Sen University, Kaohsiung,
804, Taiwan*

E-mail: kuosw@faculty.nsysu.edu.tw

*^b World Premier International (WPI) Research Center for Materials Nanoarchitectonics (MANA)
National Institute for Materials Science (NIMS), 1-1 Namiki, Tsukuba, Ibaraki 305-0044 (Japan)*

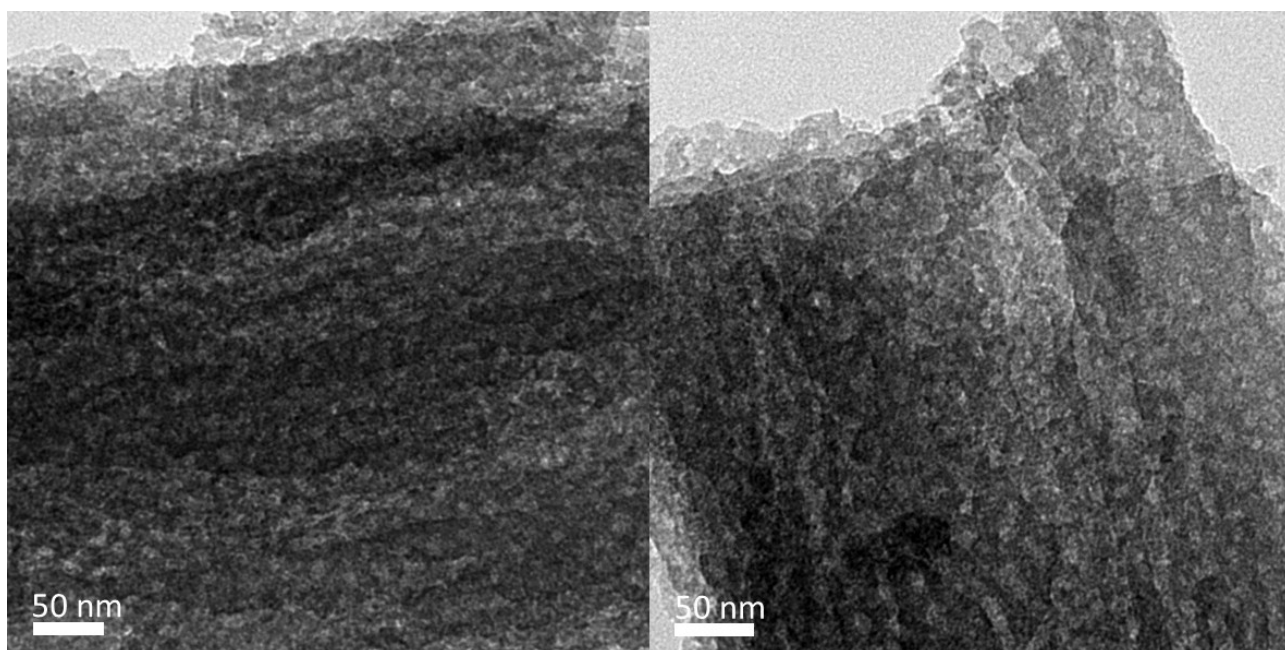


Figure S1. TEM images of mesoporous silicas templated by E₁₃-*b*-EO₄₂ at weight fractions of TEOS/templated = 1:1.

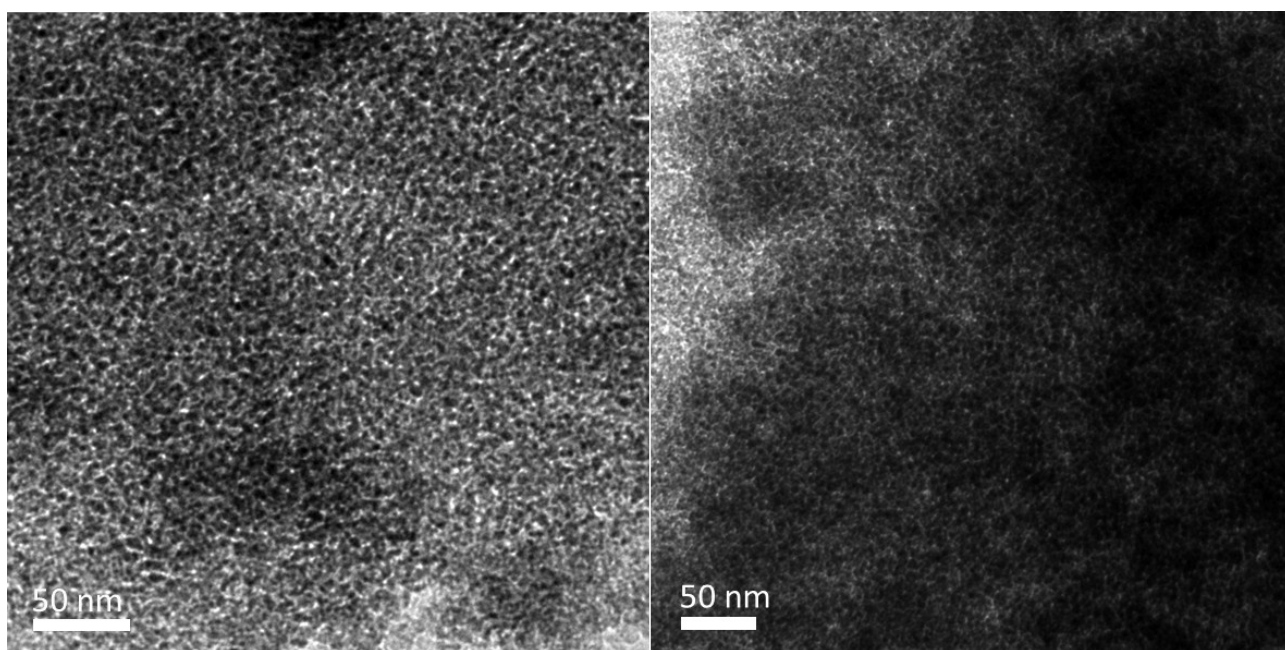


Figure S2. TEM images of mesoporous silicas templated by PE₁₃-*b*-EO₄₂-*b*-LA₁₁ at weight fractions of TEOS/templated = 1:1.

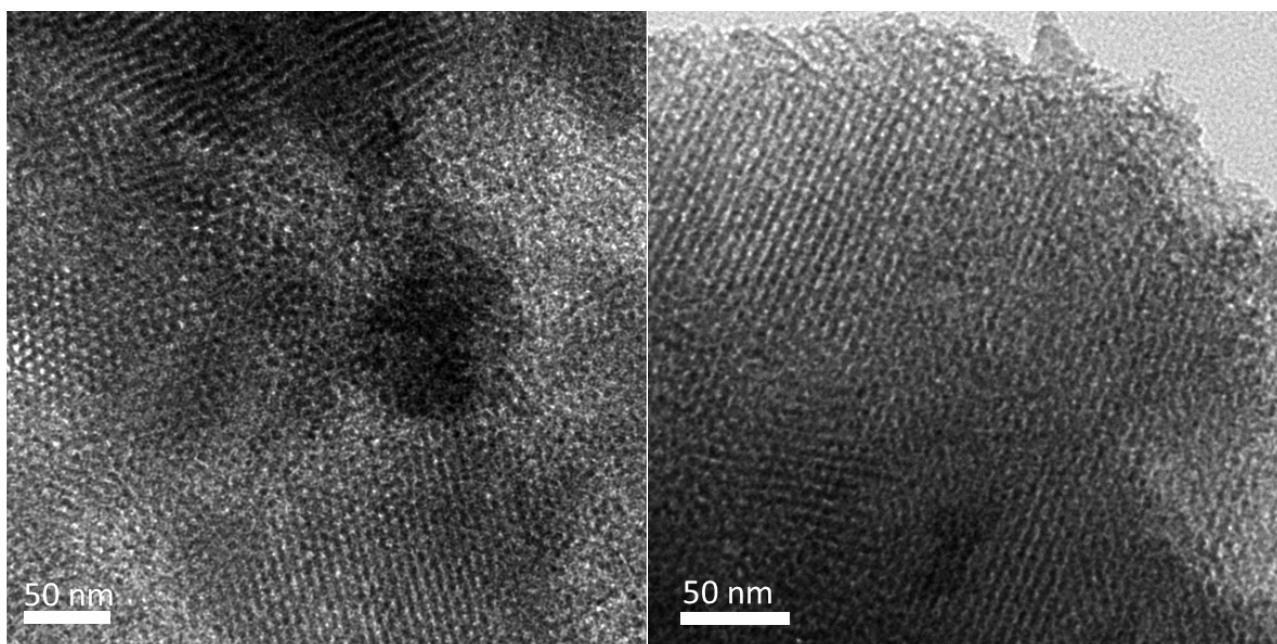


Figure S3. TEM images of mesoporous silicas templated by $PE_{13}\text{-}b\text{-}EO_{42}\text{-}b\text{-}LA_{11}$ at weight fractions of TEOS/templated = 3:1.

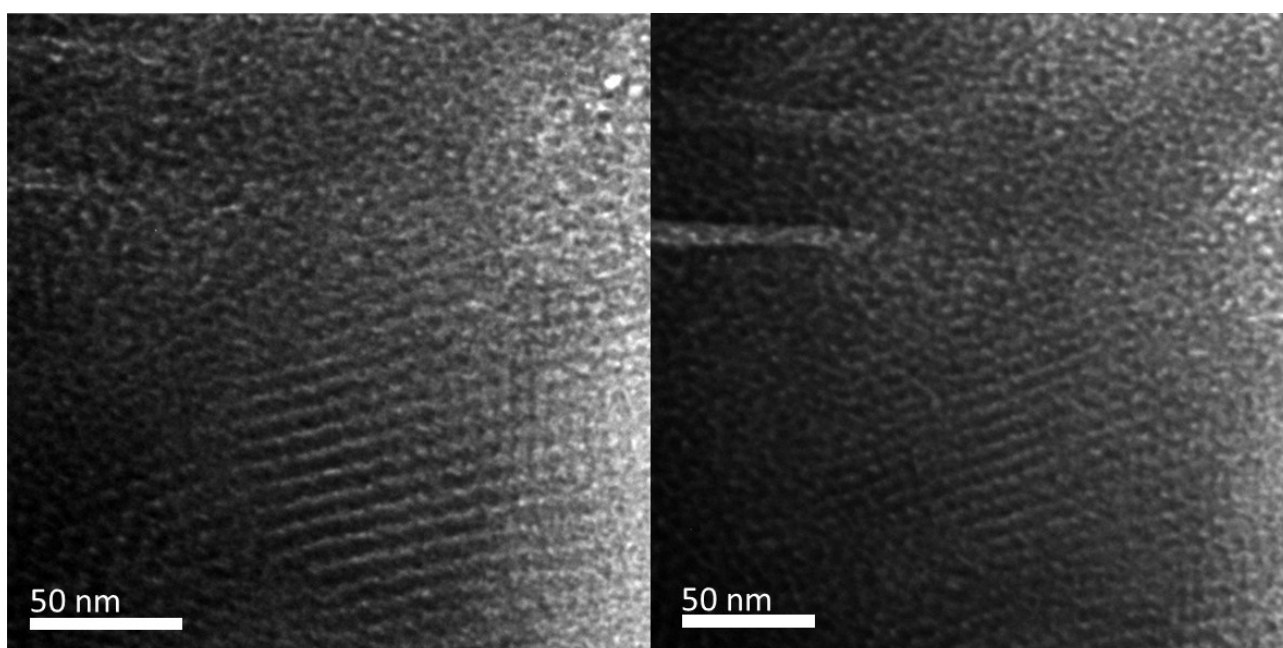


Figure S4. TEM images of mesoporous silicas templated by $PE_{13}\text{-}b\text{-}EO_{42}\text{-}b\text{-}LA_{11}$ at weight fractions of TEOS/templated = 5:1.

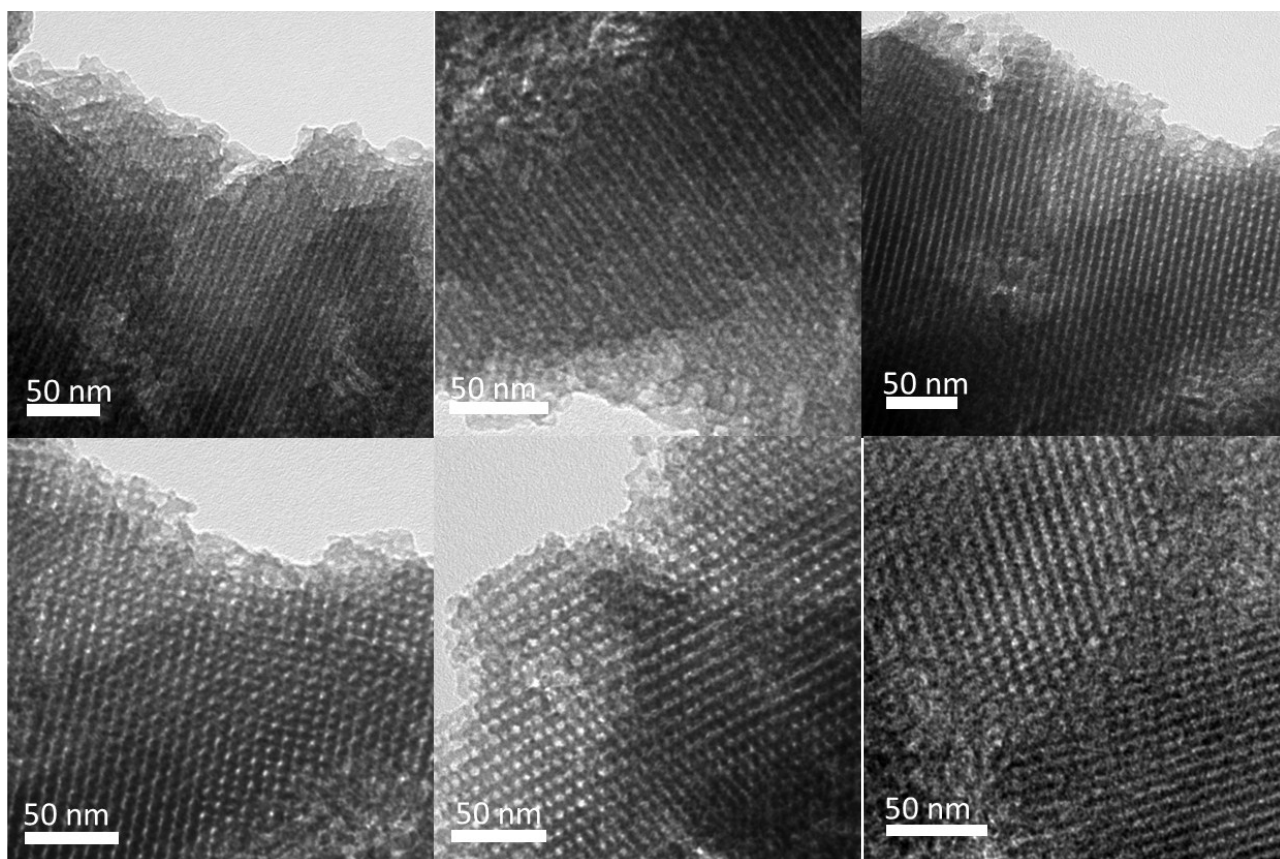


Figure S5. TEM images of mesoporous silicas templated by $E_{13}\text{-}b\text{-}EO_{42}\text{-}b\text{-}LA_{26}$ at weight fractions of TEOS/templated = 5:1.