

Supporting Information

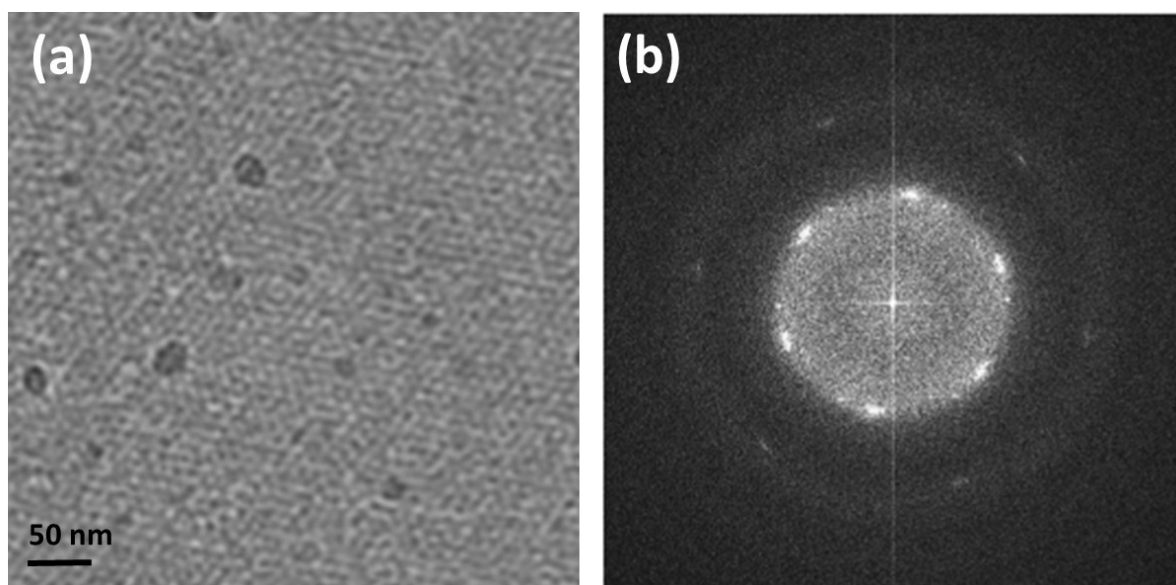
Self-Assembly of a Dual Functional Bioactive Peptide Amphiphile Incorporating both Matrix Metalloprotease Substrate and Cell Adhesion Motifs

Ashkan Dehsorkhi,^a Ricardo M. Gouveia,^b Andrew M. Smith,^{a,d} Ian W. Hamley,^{*a} Valeria Castelletto,^a Che J. Connon,^b Mehedi Reza^c and Janne Ruokolainen^c

^a*School of Chemistry, Pharmacy and Food Biosciences, University of Reading, Whiteknights, Reading, RG6 6AD, U.K.*

^b*Institute of Genetic Medicine, University of Newcastle upon Tyne, International Centre for Life, Central Parkway, Newcastle upon Tyne, NE1 3BZ, U.K.*

^c*Department of Applied Physics, Aalto University School of Science, P.O. Box 15100 FI-00076 Aalto, Finland*



SI Figure S1. Cryo-TEM images for a 1 wt% solution of C₁₆E-MMPRGDS dissolved in water (a) packing of spherical micelles and (b) hexagonal ordering of micelles with a lattice spacing of 6.7 nm.