

Supplementary Information

Tunable Synthesis of Self-assembled Cyclic Peptide Nanotubes and Nanoparticles

Leming Sun^{1,2,3}, Zhen Fan^{1,2,3}, Yongzhong Wang^{1,2,3}, Yujian Huang^{1,2,3}, Michael Schmidt¹,
Mingjun Zhang^{1,2,3,*}

Department of Biomedical Engineering, College of Engineering, The Ohio State University, Columbus, OH 43210, USA.

²Dorothy M. Davis Heart & Lung Research Institute, The Ohio State University Wexner Medical Center, Columbus, OH 43210, USA.

³Interdisciplinary Biophysics Graduate Program, The Ohio State University, Columbus, OH 43210, USA.

*Corresponding author:

Mingjun Zhang, PhD & D.Sc

Professor of Biomedical Engineering

Investigator, Davis Heart and Lung Research Institute

Faculty Mentor, Biophysics Program

The Ohio State University

340C/D Biomedical Research Tower

460 W 12th Ave.,

Columbus, OH 43210

USA

Email: zhang.4882@osu.edu

Tel.: 001-614-292-1591

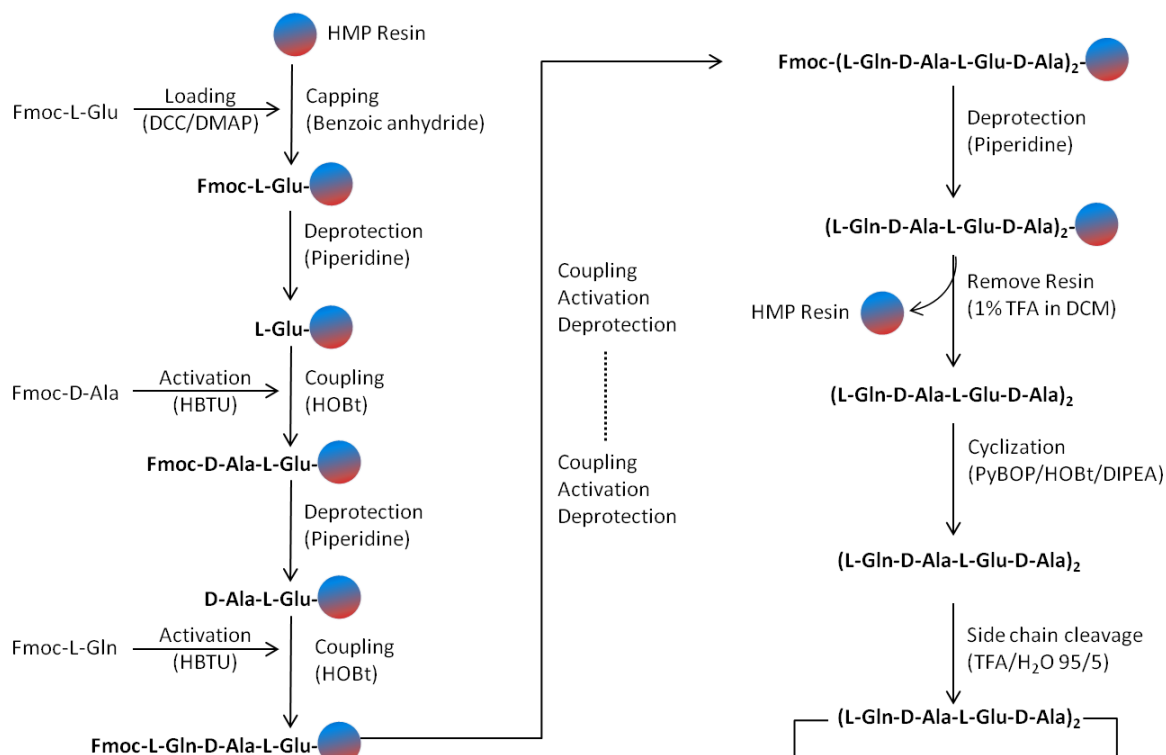


Fig. S1. Solid-phase peptide synthesis and in solution peptide cyclization.

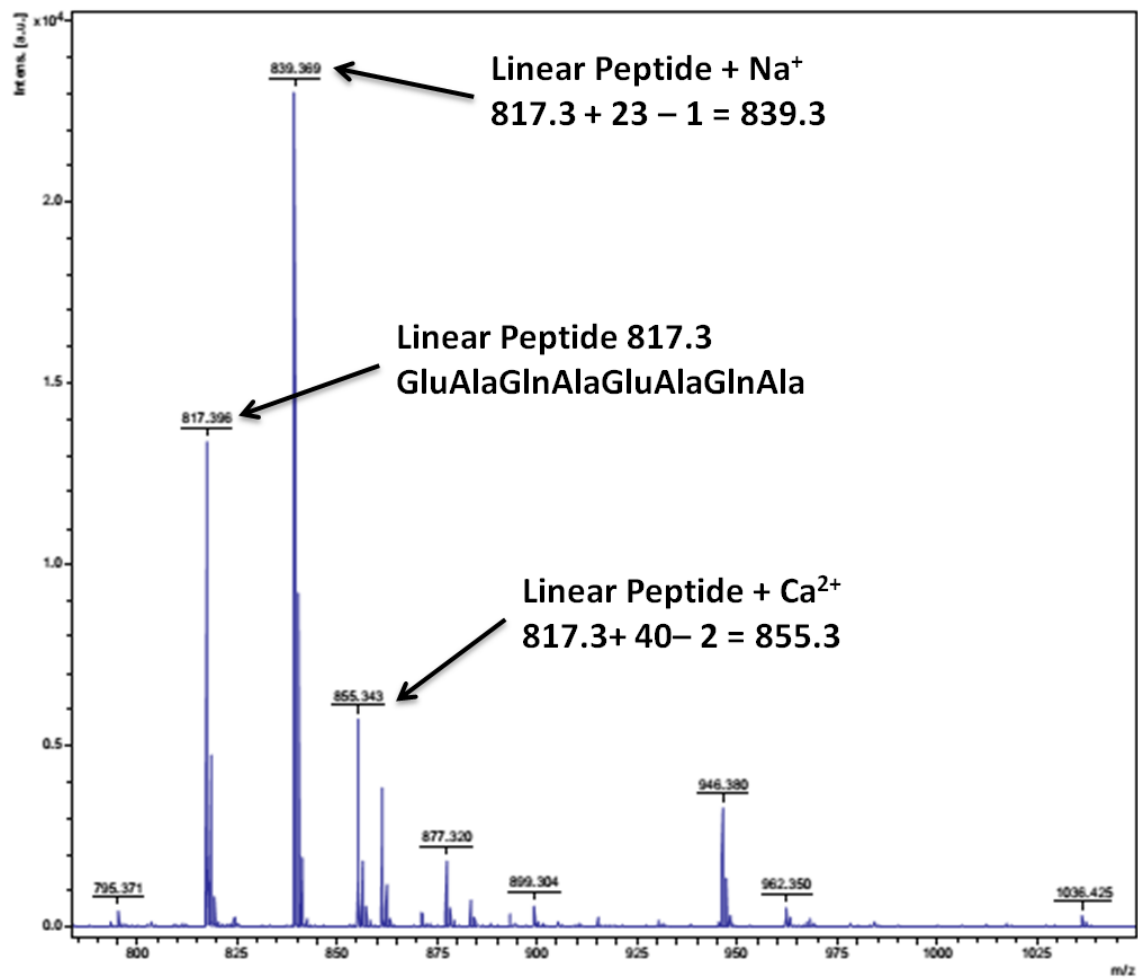


Fig. S2. MALDI-MS of linear peptides were 817.3. The numbers of 855.3 and 839.3 show the linear peptides with calcium ions and sodium ions.

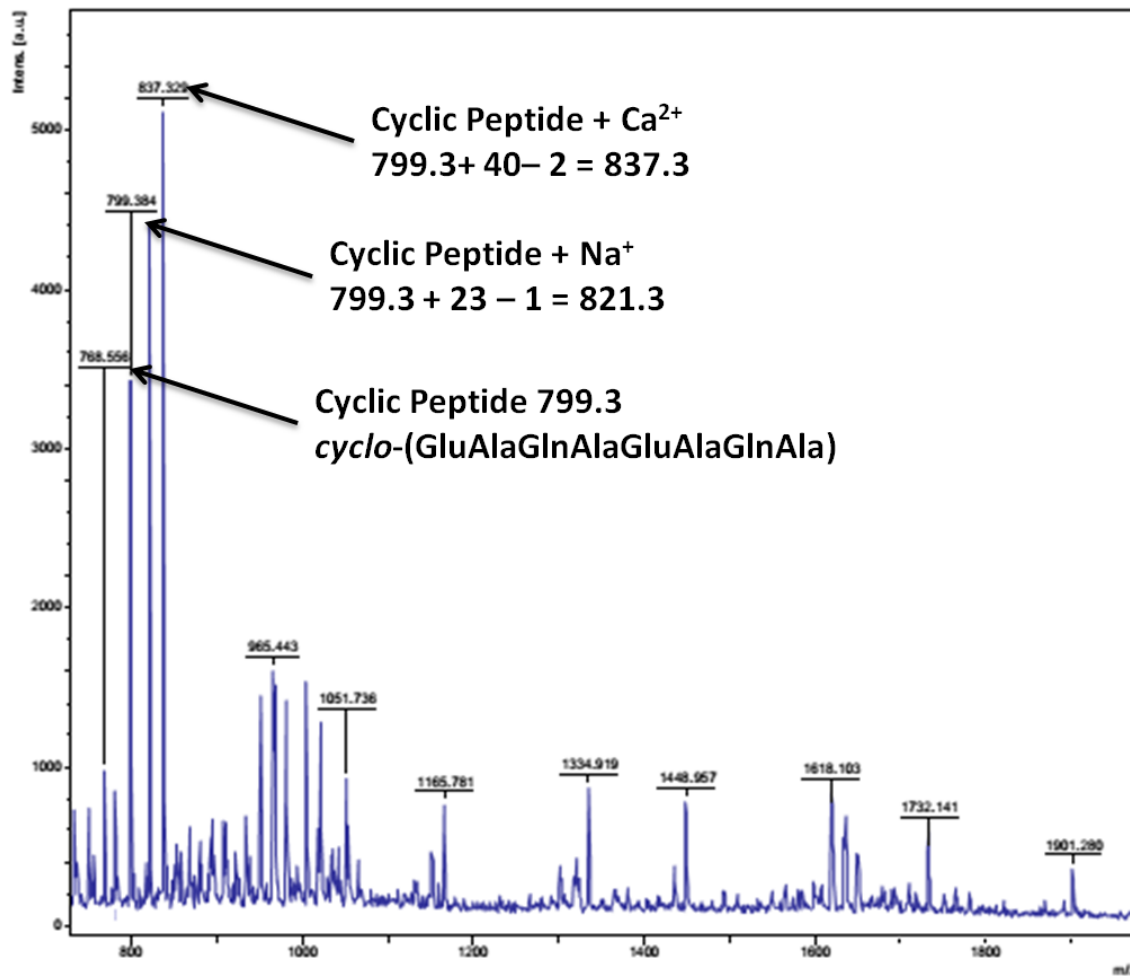


Fig. S3. MALDI-MS of cyclic peptides were 799.3. The numbers of 837.3 and 821.3 show the cyclic peptides with calcium ions and sodium ions.

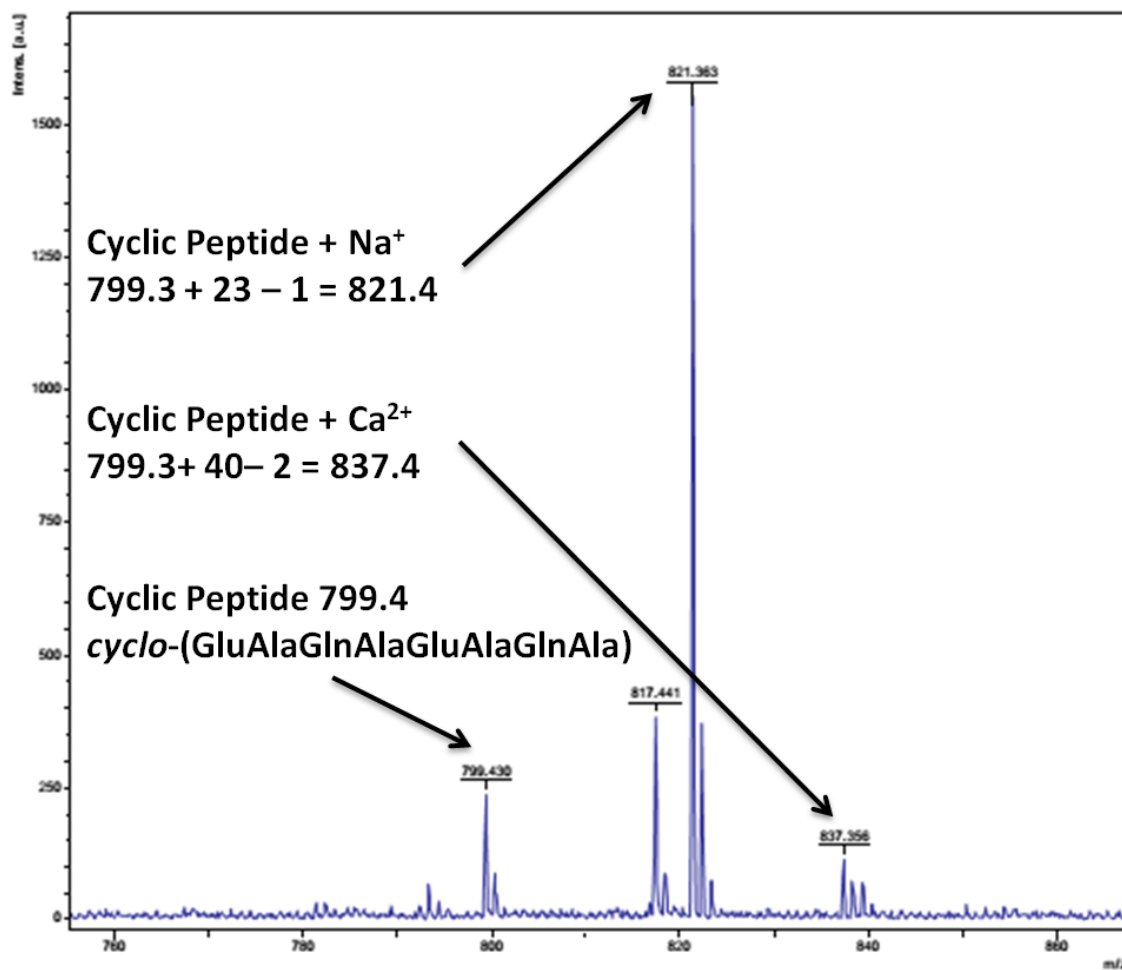


Fig. S4. MALDI-MS result of cyclic peptides after 24 hours incubation at pH 12 solutions. The peak for cyclic peptides was 799.4. The numbers of 837.4 and 821.4 show the cyclic peptides with calcium ions and sodium ions.