

Supplementary material

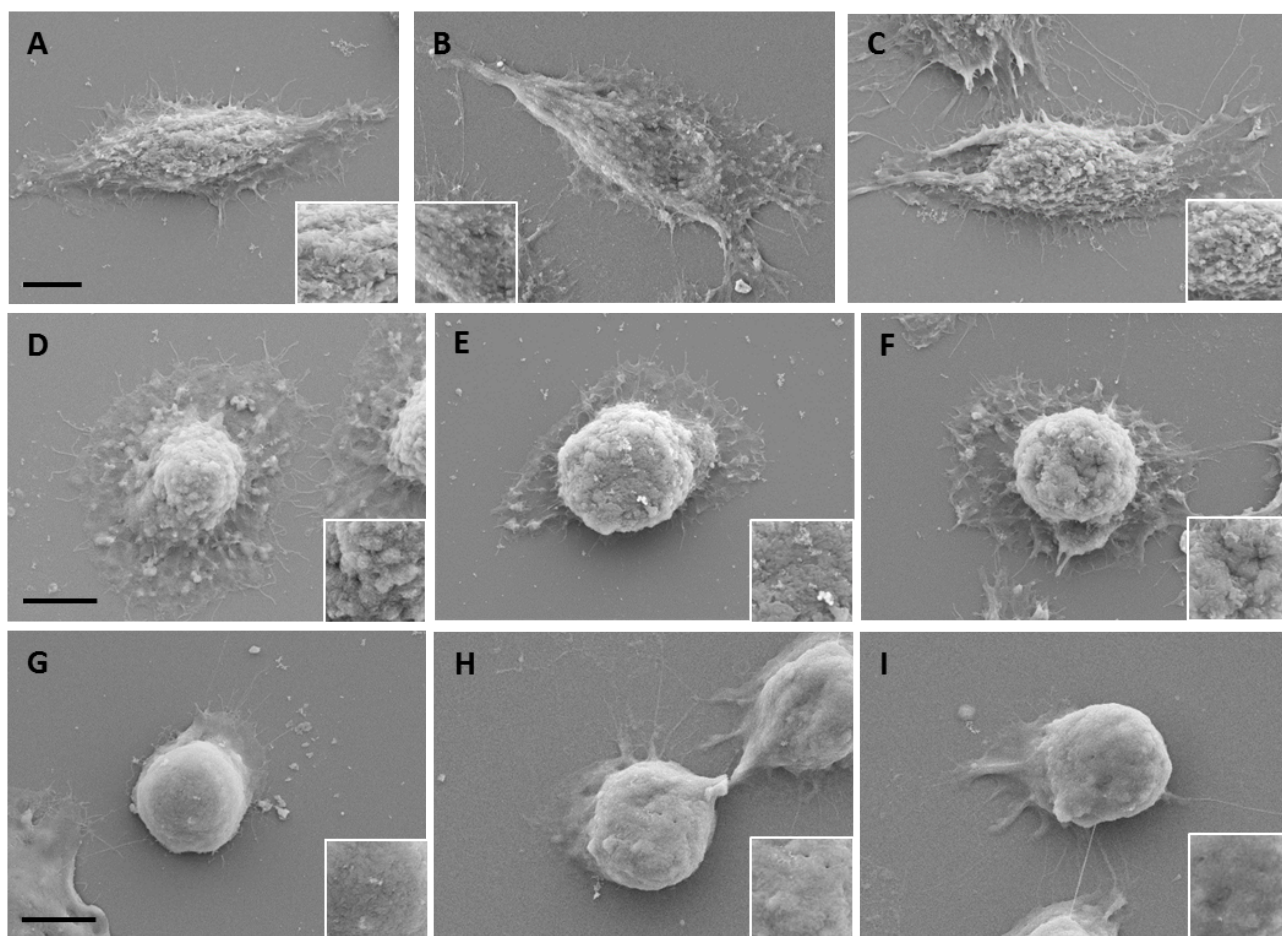


Fig.1S Representative SEM images of SW480-E (A, B, C), SW480-R (D, E, F) and SW620 (G, H, I). In the insets, the surface roughness of each cell is displayed. Scale bar is 10 μm .

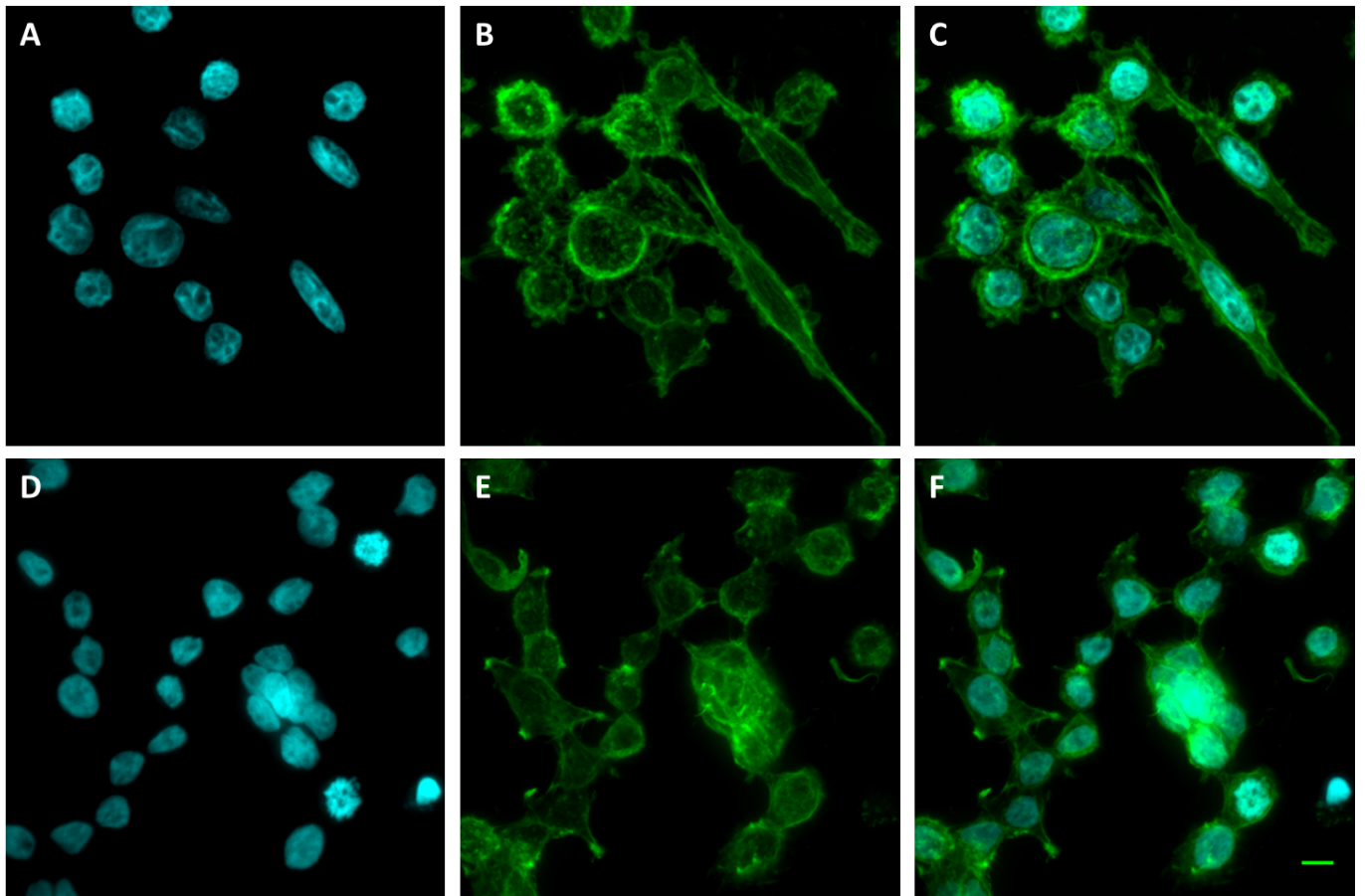


Fig.2S Representative confocal images of SW480 (A, B, C) and SW620 (D, E, F). SW480 have different shapes in culture with mixed elongated and round cells, while SW620 are smaller, round and prefer to grow in small aggregates. Actin cytoskeleton labelled with Phalloidin is shown in green (A, D) while cell nuclei are labelled in DAPI (B, E). Merge images of the two channels are also reported (C, F). Scale bar is 10 μm .