

Supporting Information

Co-adsorption between peptide surfactant V₆K and conventional surfactants SDS and C₁₂TAB

Dharana Jayawardane, Fang Pan, Jian R. Lu, Xiubo Zhao

Figure S1

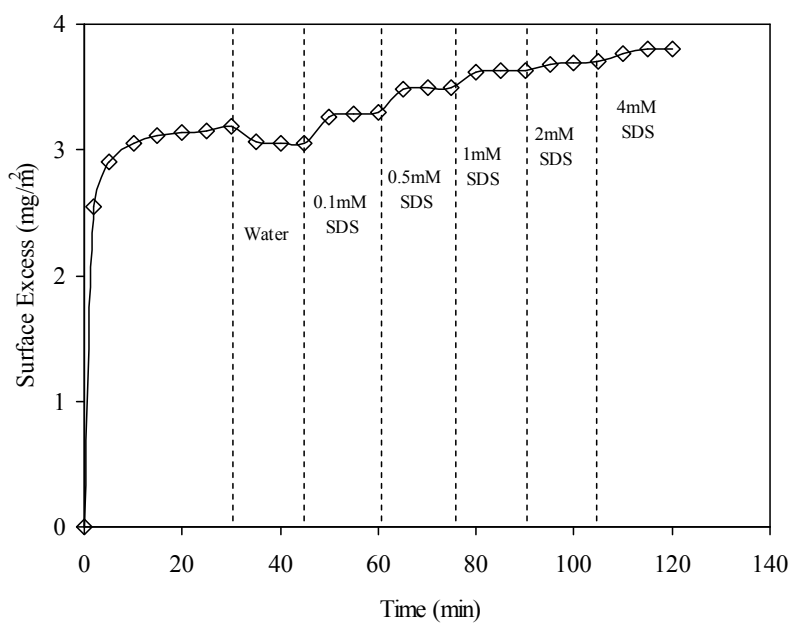


Figure S1. Ellipsometry data showing the adsorption of V₆K (100 μg/ml, pH 7) at the silica/water interface and washed by water and different concentrations of SDS (from 0.1 mM to 4 mM).

Figure S2

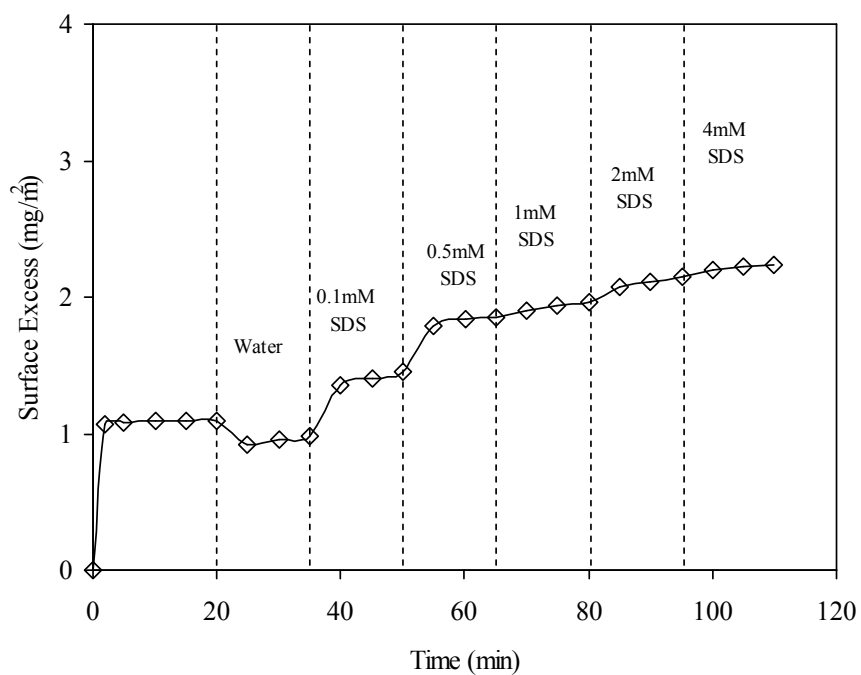


Figure S2. Ellipsometry data showing the adsorption of V_6K ($100 \mu\text{g/ml}$, $\text{pH } 7$) at C_8/water interface and washed by water and different concentration of SDS (from 0.1 mM to 4 mM).

Figure S3

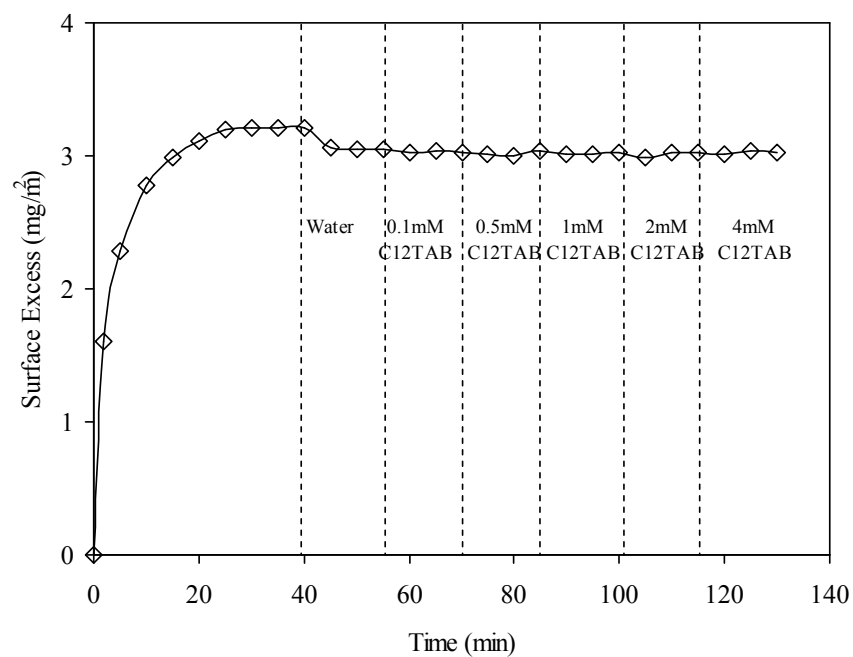


Figure S3. Ellipsometry data showing the adsorption isotherm of V₆K (100 µg/ml, pH 7) at silica/water interface and washed by water and different concentration of C₁₂TAB (from 0.1 mM to 4 mM).

Figure S4

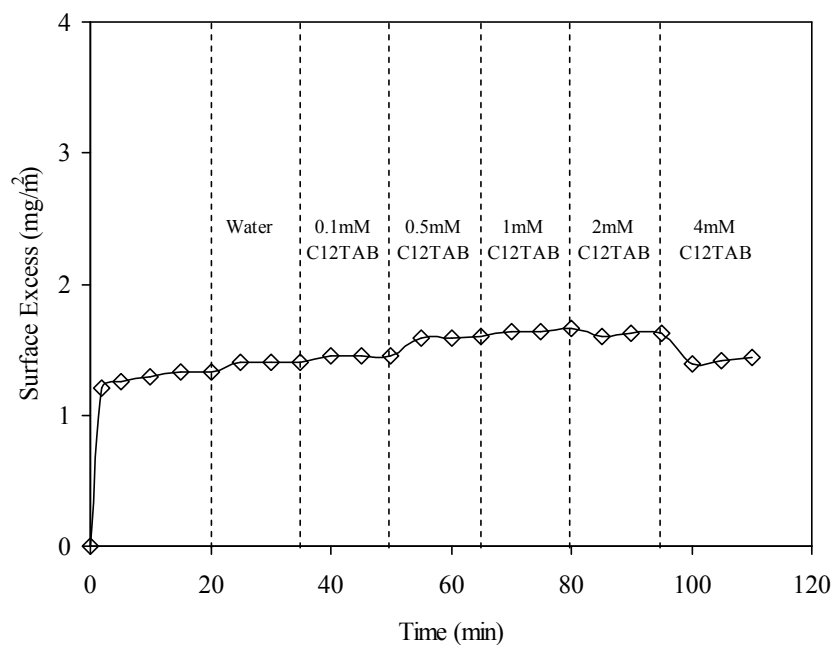


Figure S4. Ellipsometry data showing the adsorption of V_6K ($100 \mu\text{g/ml}$, $\text{pH } 7$) at C_8 /water interface and washed by water and different concentration of $C_{12}TAB$ (from 0.1 mM to 4 mM).