

Supporting Information for:

Nucleation and growth of helical nanofilament (B4) liquid-crystal phase confined in nanobowls

Seong Ho Ryu,^a Hanim Kim,^a Sunhee Lee,^a Yun Jeong Cha,^a Tae Joo Shin,^b Hyungju Ahn,^c Eva Korblova,^d
David M. Walba,^d Noel A. Clark,^e Sang Bok Lee^{a,f} and Dong Ki Yoon^{*a}

^aGraduate School of Nanoscience and Technology and KINC, KAIST, Daejeon, 305-701, Republic of
Korea

^bUNIST Central Research Facilities & School of Natural Science, UNIST, Ulsan, 689-789, Republic of
Korea

^cPohang Accelerator Laboratory, POSTECH, Pohang, 790-784, Republic of Korea

^dDepartment of Chemistry and Soft Materials Research Center, University of Colorado, Boulder, CO
80309, United States

^eDepartment of Physics and Soft Materials Research Center, University of Colorado, Boulder, CO
80309, United States

^fDepartment of Chemistry and Biochemistry, University of Maryland, College Park, MD 20742, United
States

***Corresponding author** Email: nandk@kaist.ac.kr

Figure S1

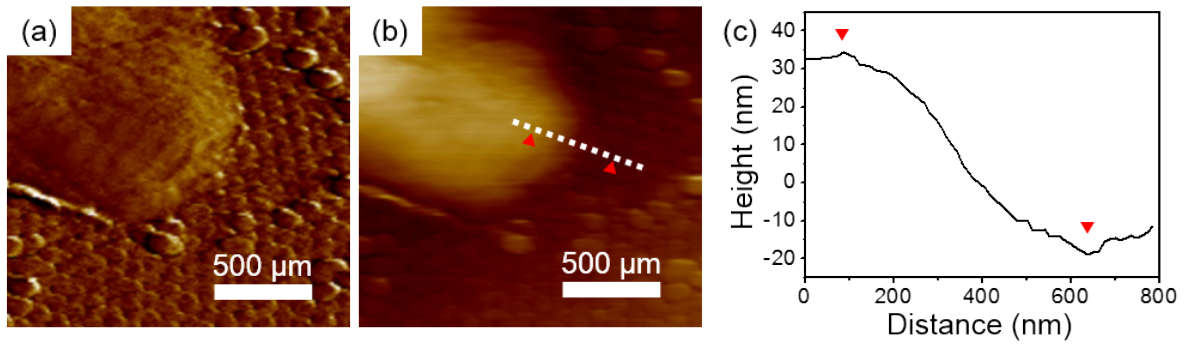


Fig. S1. Transition from the confined nanostructures to bulk HNFs. (a) The AFM deflection error, (b) height images and (c) the corresponding height profile.

Figure S2

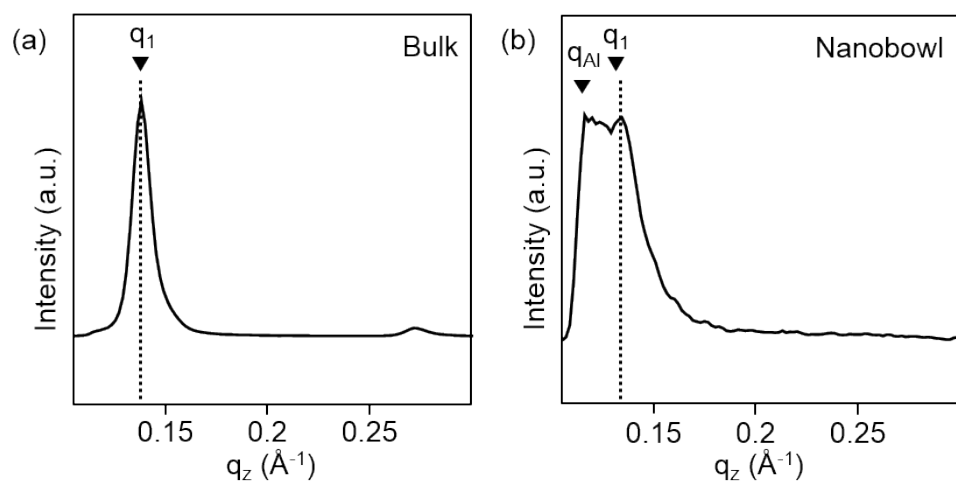


Fig. S2. The 1D line-cut graphs from the resultant GIXD 2D pattern of (a) the bulk sample and (b) the confined structure in the nanobowls.

Figure S3

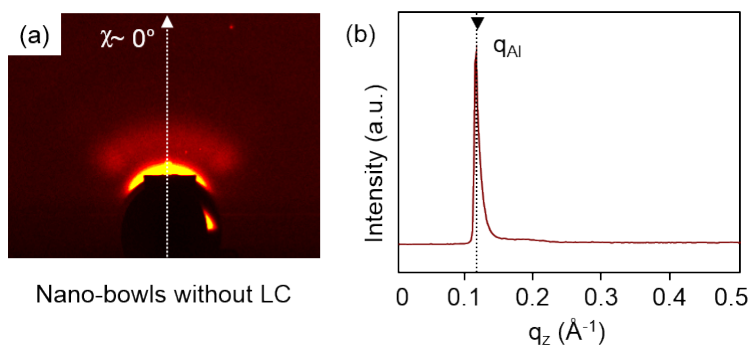


Fig. S3. The resultant GIXD 2D pattern of the nanobowls without sample and corresponding 1D line-cut