

Supporting information

In Situ Growth and Assembly of Microporous Aluminophosphate Nanosheets into Ordered Architectures at Low Temperature and the Enhanced Catalytic Performance

Beibei Gao,^{ab} Peng Tian,^a Mingrun Li,^c Miao Yang,^a Yuyan Qiao,^{ab} Linying Wang,^a Shutao Xu,^a
and Zhongmin Liu^{*ac}

^a National Engineering Laboratory for Methanol to Olefins, Dalian National Laboratory for Clean Energy, Dalian Institute of Chemical Physics, Chinese Academy of Sciences, Dalian 116023, P. R. China. E-mail: liuzm@dicp.ac.cn

^b University of Chinese Academy of Sciences, Beijing 100049, P. R. China

^c State Key Laboratory of Catalysis, Dalian Institute of Chemical Physics, Chinese Academy of Sciences, Dalian 116023, P. R. China.

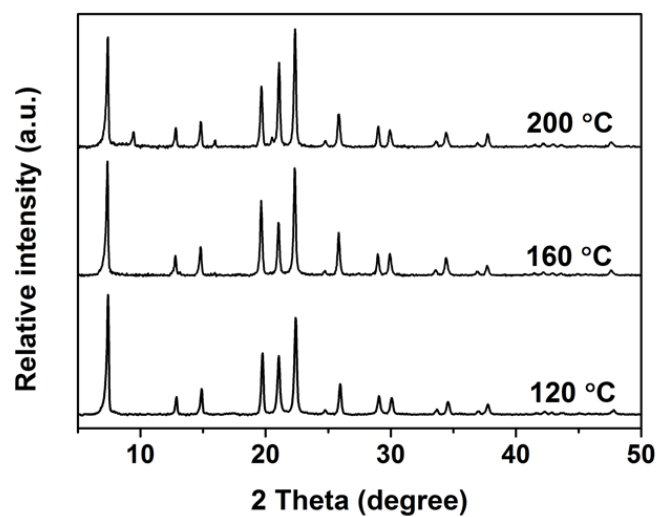


Fig. S1 XRD patterns of the products prepared at different crystallization temperatures. The synthetic gel compositions are 1.5 TEA: 0.8 Al₂O₃: 1.0 P₂O₅: 0.5 SiO₂: 50 H₂O. The crystallization time is 24h.

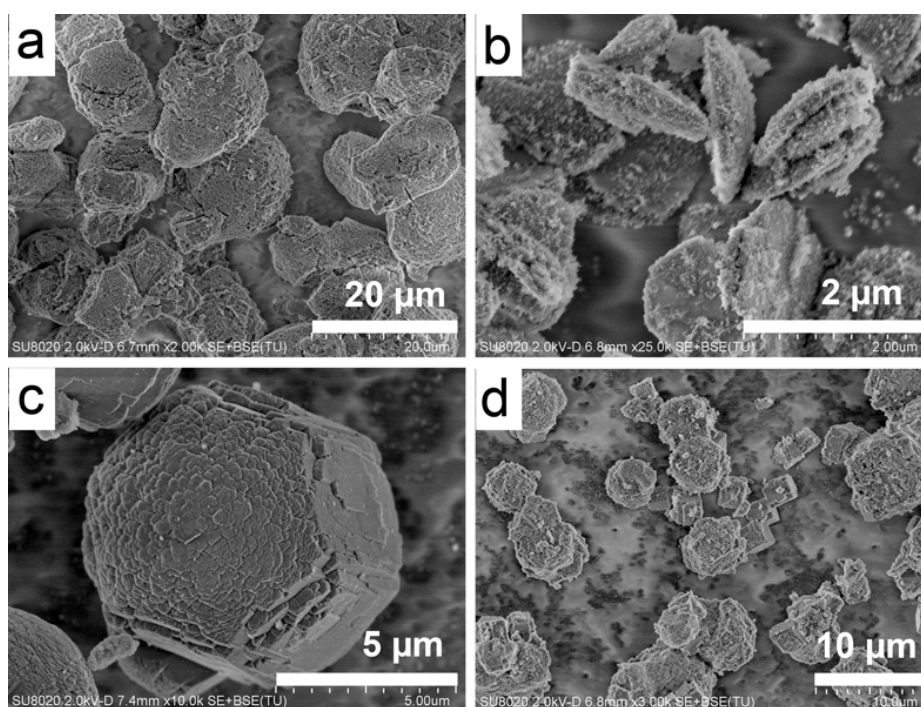


Fig. S2 SEM images of the samples prepared with different templates at 200 °C: (a) dimethylethanolamine; (b) ; (c) TPA; (d) TEAOH.

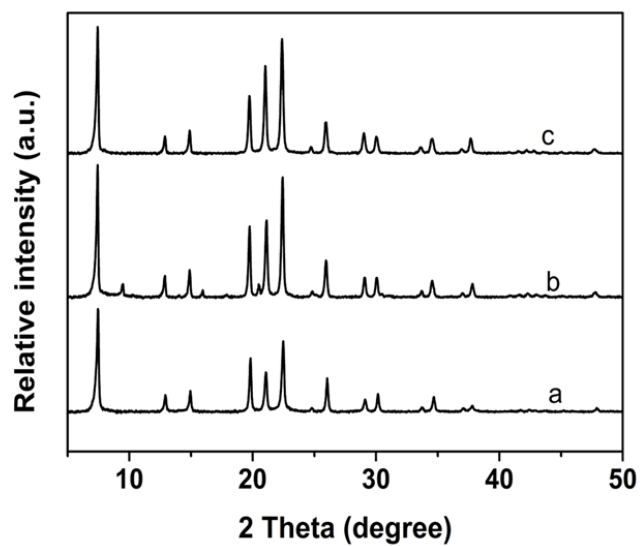


Fig. S3 XRD patterns of the MeAPO-5-NS products: (a) CrAPO-5-NS; (b) CoAPO-5-NS; (c) MnAPO-5-NS.

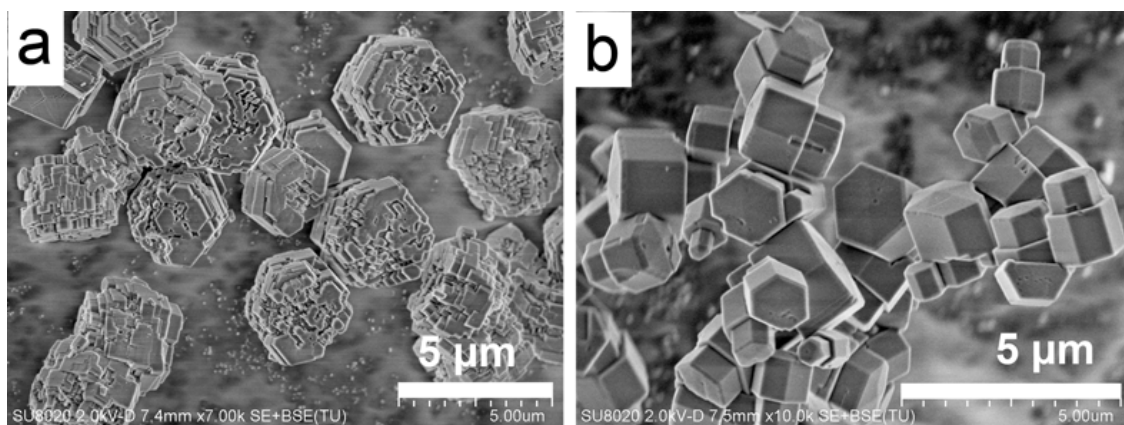


Fig. S4 SEM images of the conventional SAPO-5-C (a) and MnAPO-5-C (b).

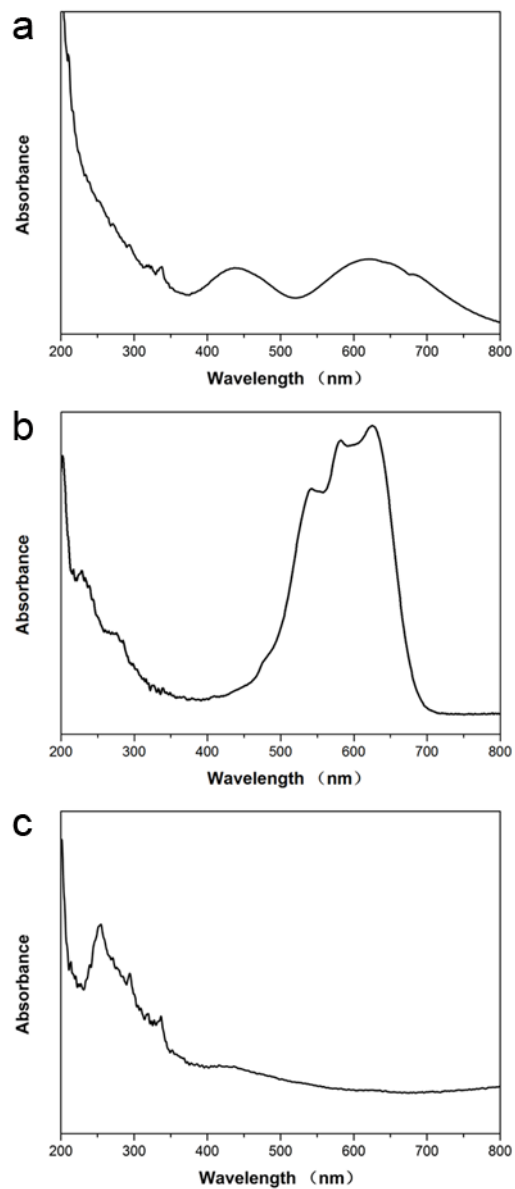


Fig. S5 DR UV - Vis spectra of the as-synthesized MeAPO-5-NS: (a) CrAPO-5-NS, (b) CoAPO-5-NS, (c) MnAPO-5-NS.

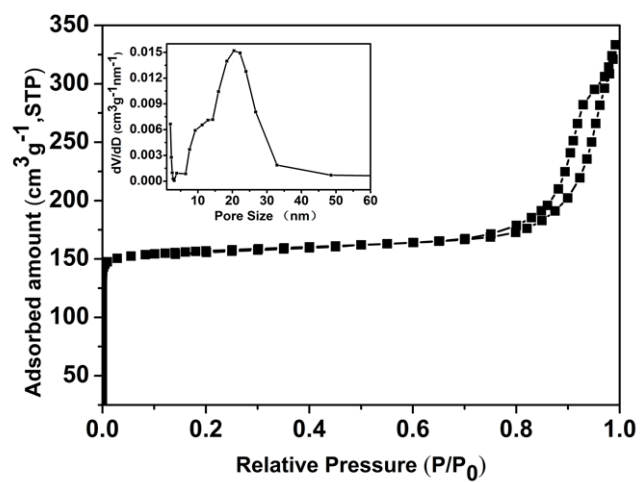


Fig. S6 N₂ adsorption-desorption isotherms of DNL-7-Co. The inset shows the corresponding BJH pore size distribution curve calculated from the desorption branch.

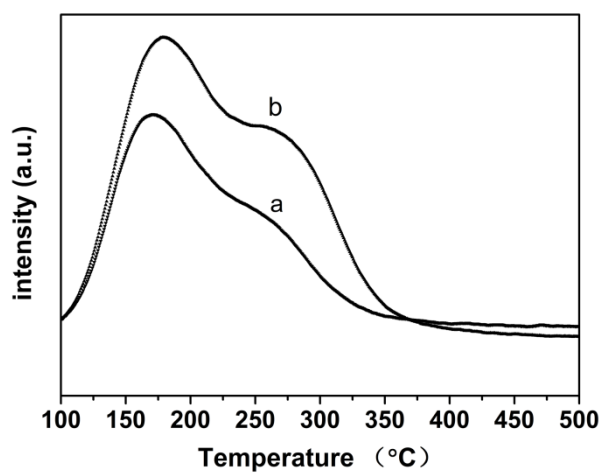


Fig. S7 NH₃-TPD profiles of SAPO-5-NS2 (a) and SAPO-5-C (b).