

## Amidoxime-Modified Mesoporous Silica for Uranium Adsorption under Seawater Conditions

Chamila Gunathilake,<sup>1</sup> Joanna Gorka,<sup>2</sup> Shen Dai,<sup>2</sup> and Mietek Jaroniec<sup>1\*</sup>

<sup>1</sup>Department of Chemistry and Biochemistry, Kent State University, Kent, OH 44242, USA.

<sup>2</sup>Chemical Sciences Division, Oak Ridge National Laboratory, Oak Ridge, TN 37831, USA.

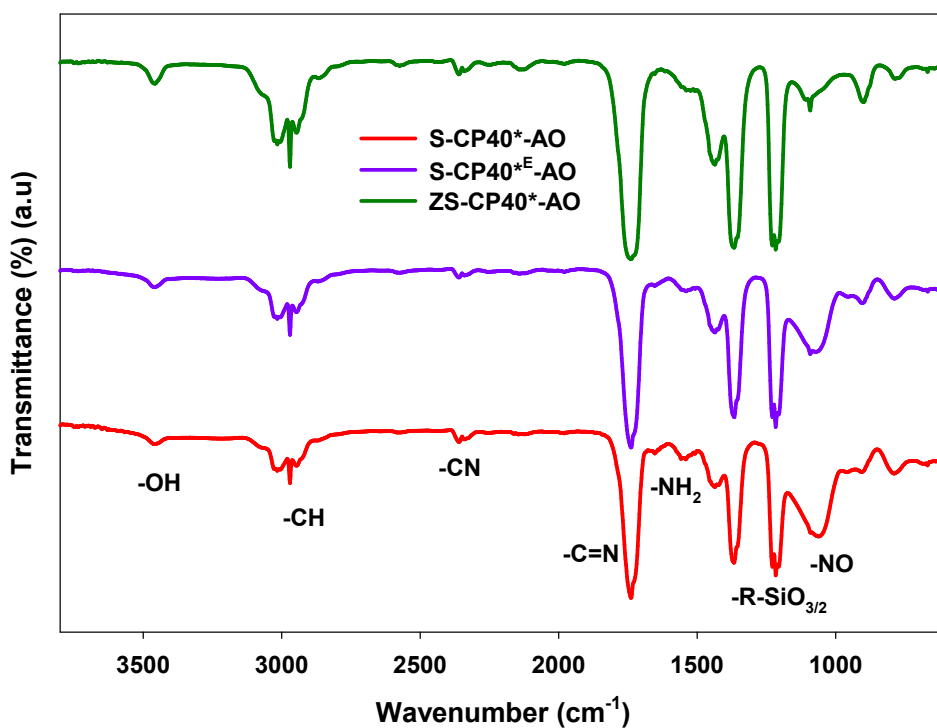
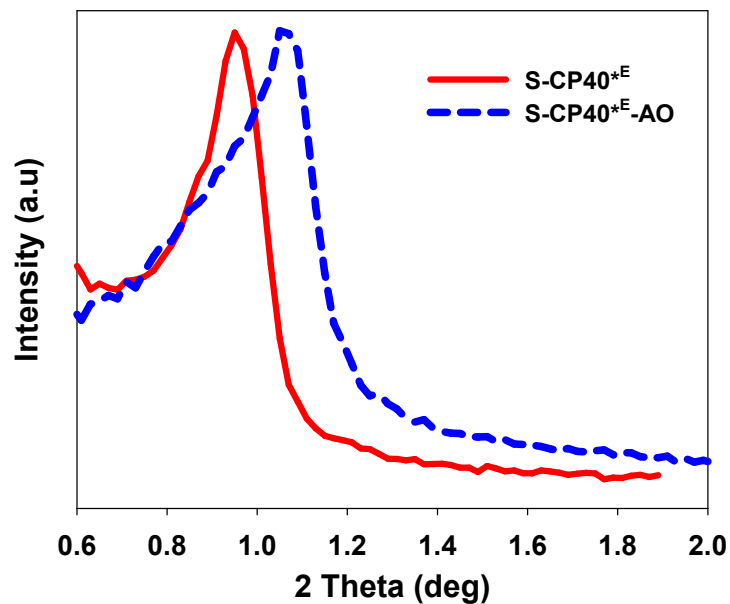
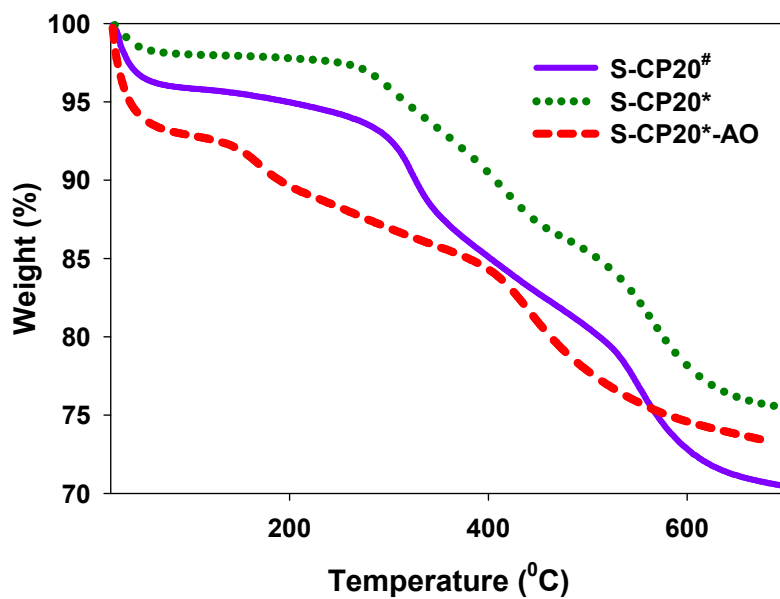


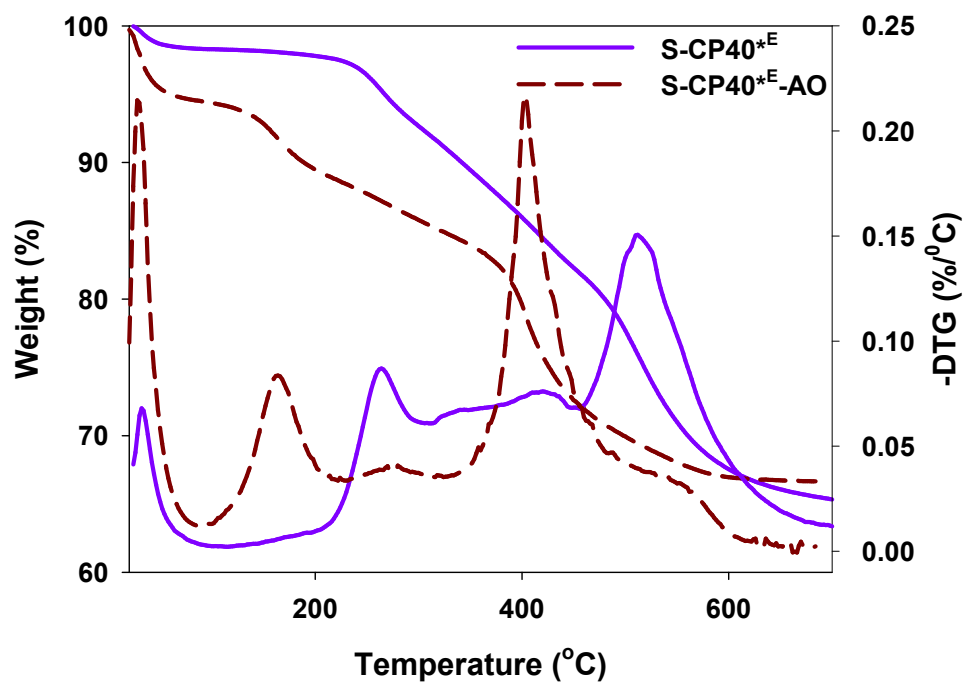
Figure S1. IR spectra of the S-CP40\*-AO, S-CP40\*E-AO and ZS-CP40\*-AO samples.



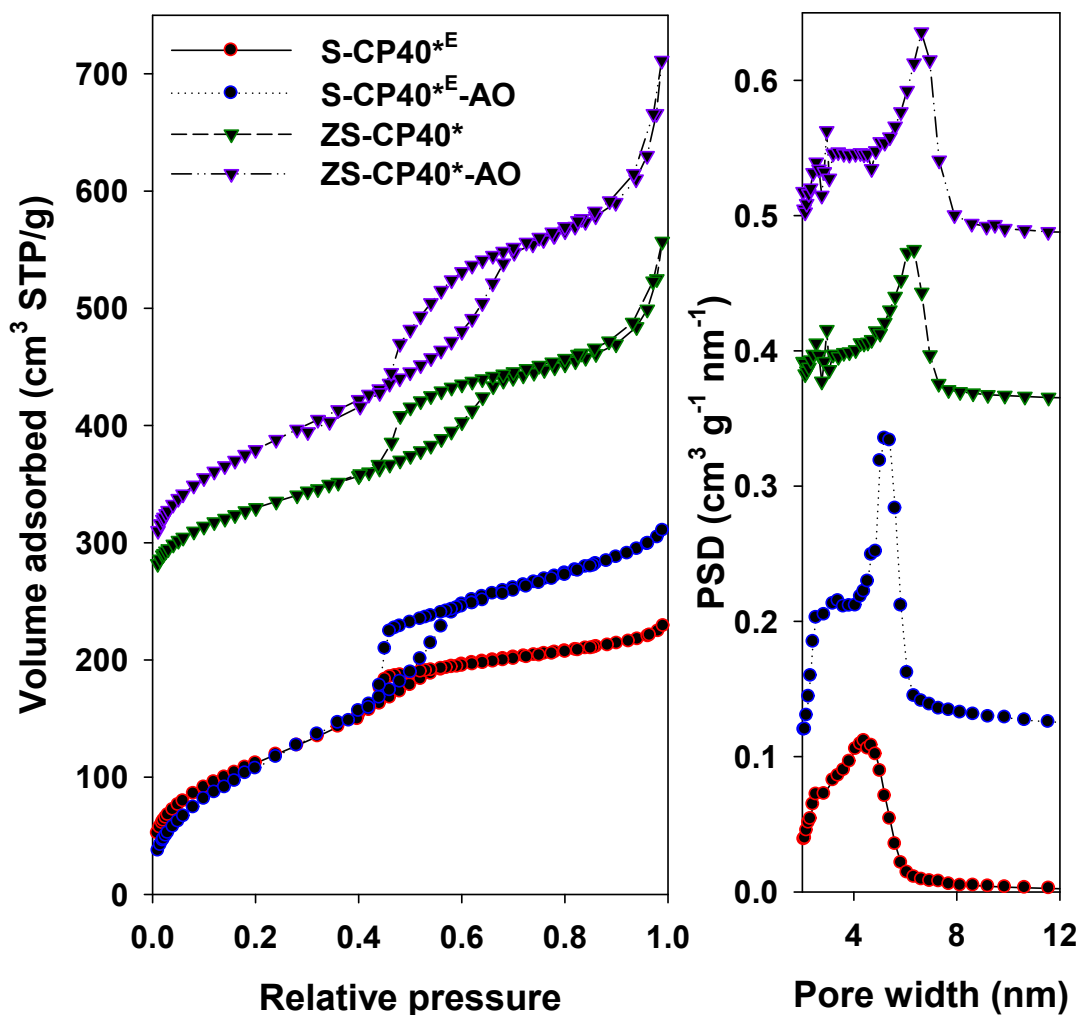
**Figure S2.** Small angle XRD patterns for the S-CP40\*<sup>E</sup> and S-CP40\*<sup>E</sup>-AO samples.



**Figure S3.** TG profiles for the as-synthesized, extracted, and amidoximated S-CP20 samples.



**Figure S4.** TG and DTG profiles for the S-CP40\*<sup>E</sup> and S-CP40\*<sup>E</sup>-AO samples.



**Figure S5.** Nitrogen adsorption isotherms (left panel) and the corresponding PSD curves (right panel) for cyanopropyl (-CP) and amidoximated (-AO) samples; Top isotherms are shifted by multiple of 250 cm<sup>3</sup> STP/g from the bottom ones. PSD curves are shifted by 0.12, 0.38, and 0.50 cm<sup>3</sup> g<sup>-1</sup> nm<sup>-1</sup>, respectively, in relation to the curve 1.