

Supporting Information for
“Improved electrochemical performance of $\text{Na}_3\text{V}_2(\text{PO}_4)_3$ cathode by
B-doping of carbon coating layer for sodium-ion batteries” by

Wei Shen, Hui Li, Cong Wang, Zhihong Li, Qunjie Xu, Haimei Liu*, Yonggang Wang*

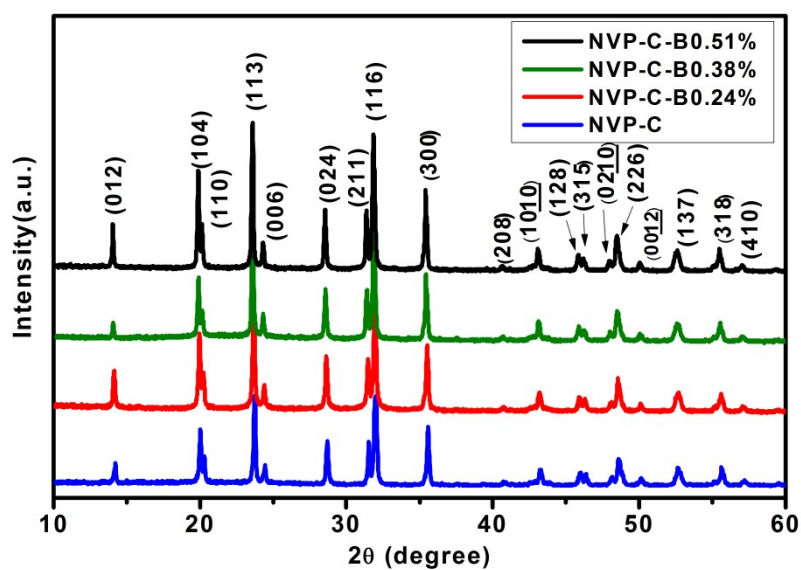


Fig. S1 XRD patterns of NVP-C and various NVP-C-B samples.

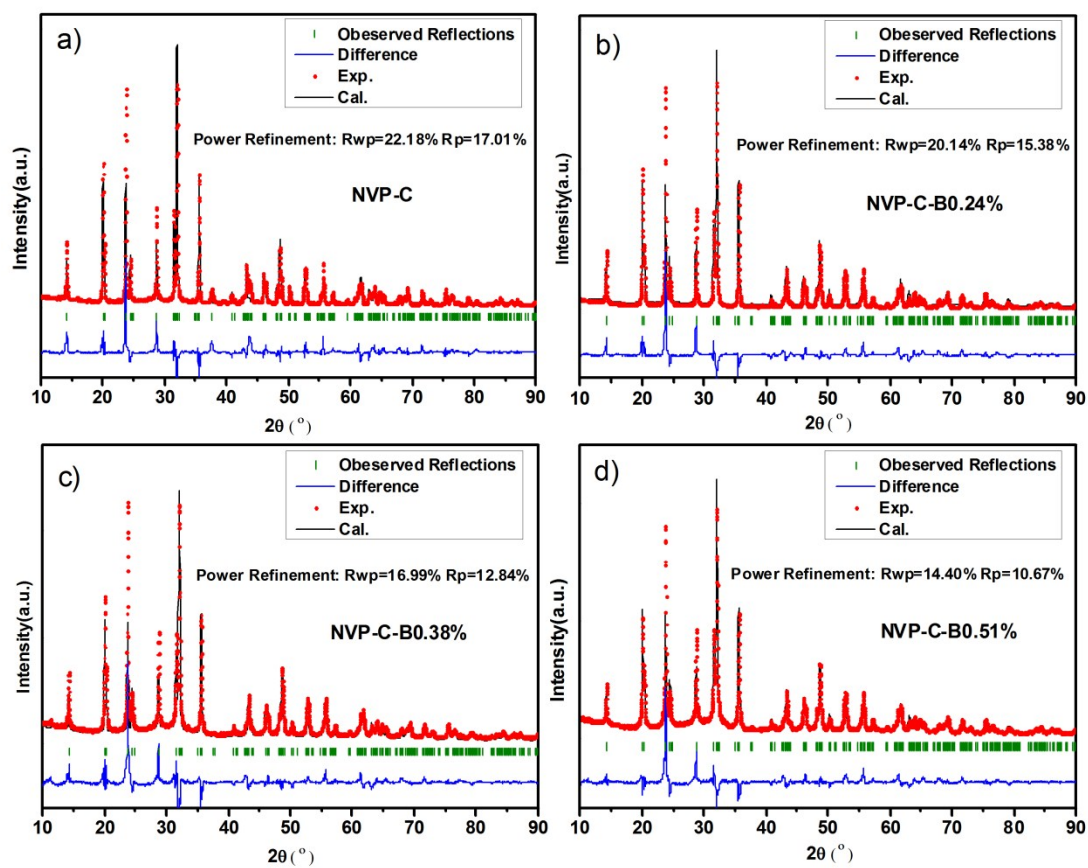


Fig. S2 Rietveld refined XRD patterns of NVP-C and various NVP-C-B samples.

Table S1. Results of structural analysis obtained from XRD Rietveld refinement of NVP-C and various NVP-C-B samples.

Lattice constant	NVP-C	NVP-C-B0.24%	NVP-C-B0.38%	NVP-C-B0.51%
a(=b) /Å	8.7257	8.7264	8.7212	8.7216
c/Å	21.7826	21.7888	21.7610	21.7648
v/Å ³	1435.92	1436.91	1433.58	1433.37

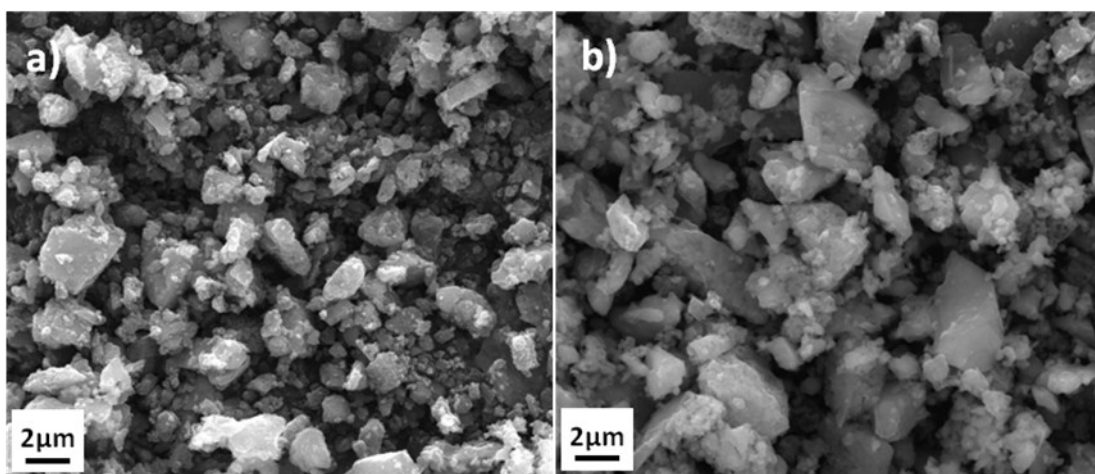


Fig. S3 SEM images of a) NVP-C-B0.24% and b) NVP-C-B0.51% samples.

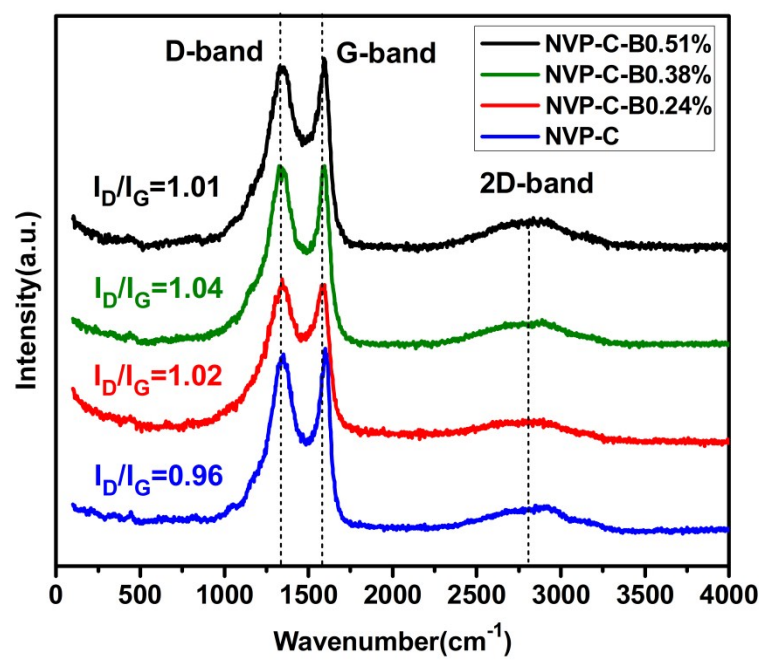


Fig. S4 Raman spectra of NVP-C sample and various NVP-C-B samples.

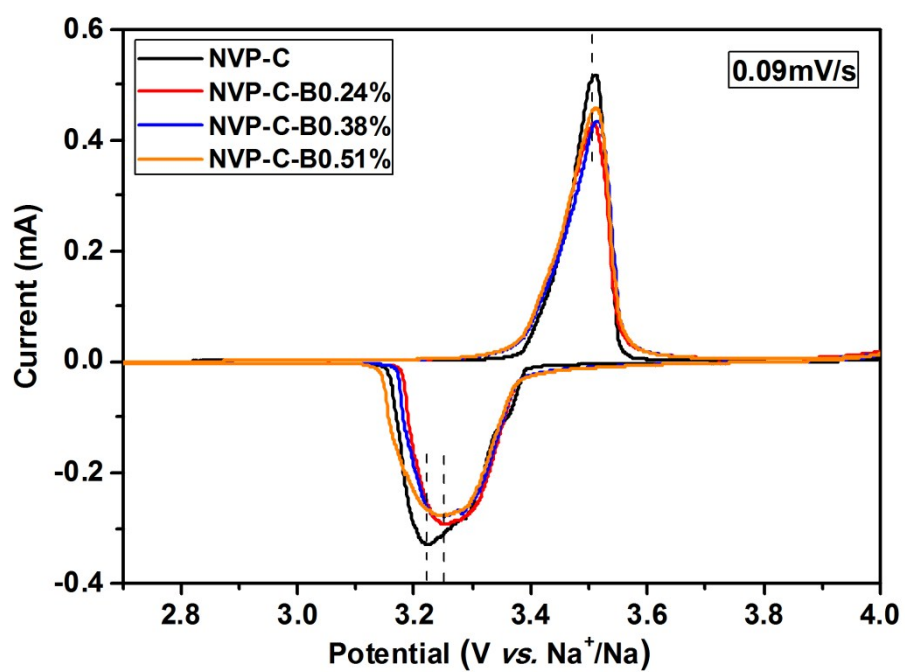


Fig. S5 CV curves at 0.09mV/s for NVP-C and various NVP-C-B samples.

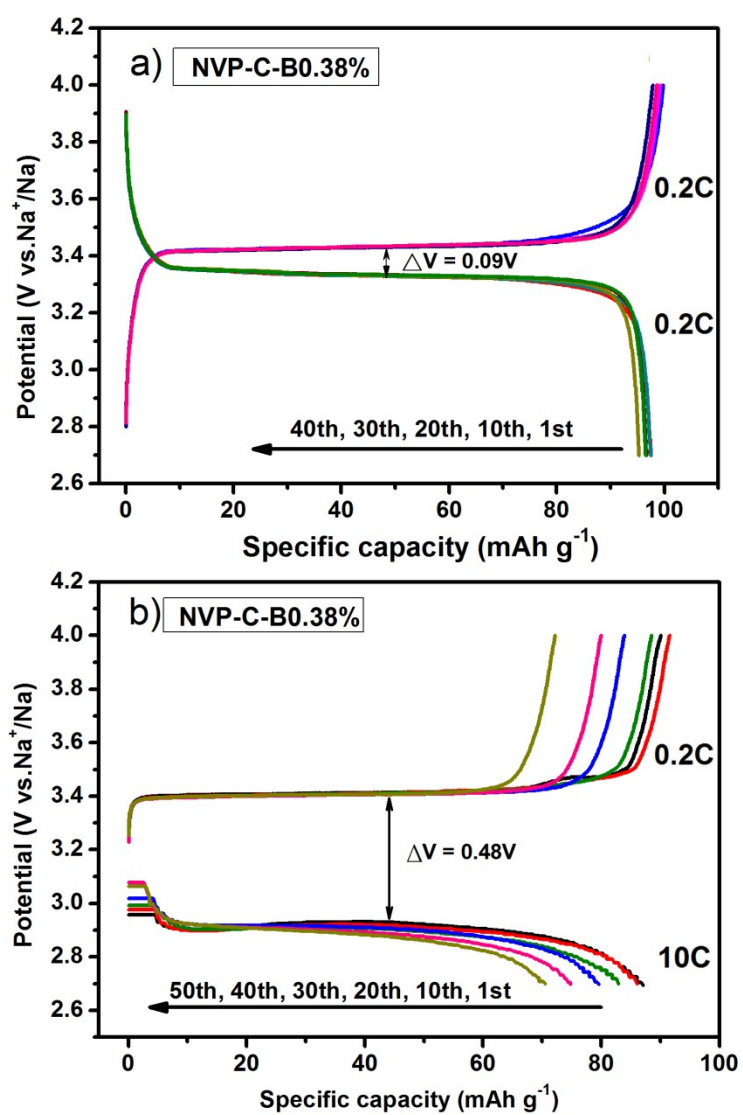


Fig. S6 Charge/discharge profiles of various cycles at the current densities of a) 0.2 C and b) 10 C in the NVP-C-B0.38% sample.

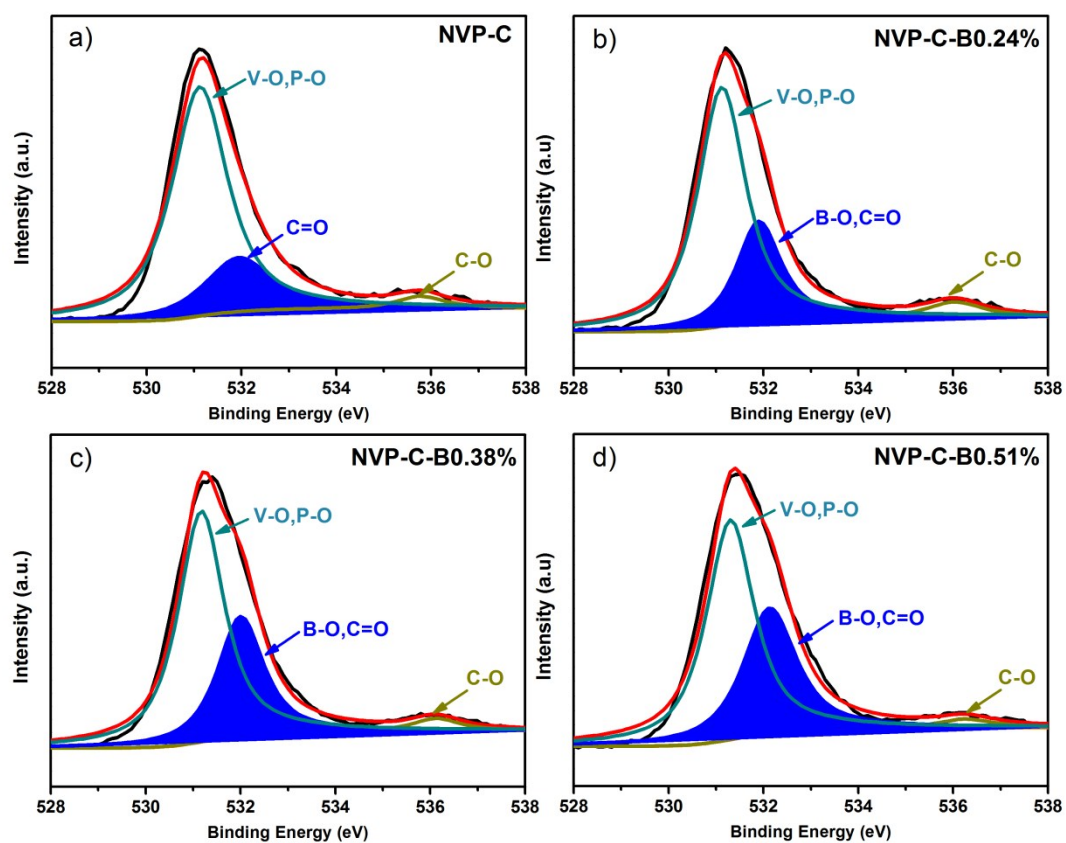


Fig. S7 a-d) High-resolution XPS spectra of O1s for the NVP-C and various NVP-C-B samples.