

Fig. S1. The 1 kg bacterial cellulose pellicle mat as grown at removal of growth medium (before shredding) (a), the shredded mat before acid hydrolysis (b).

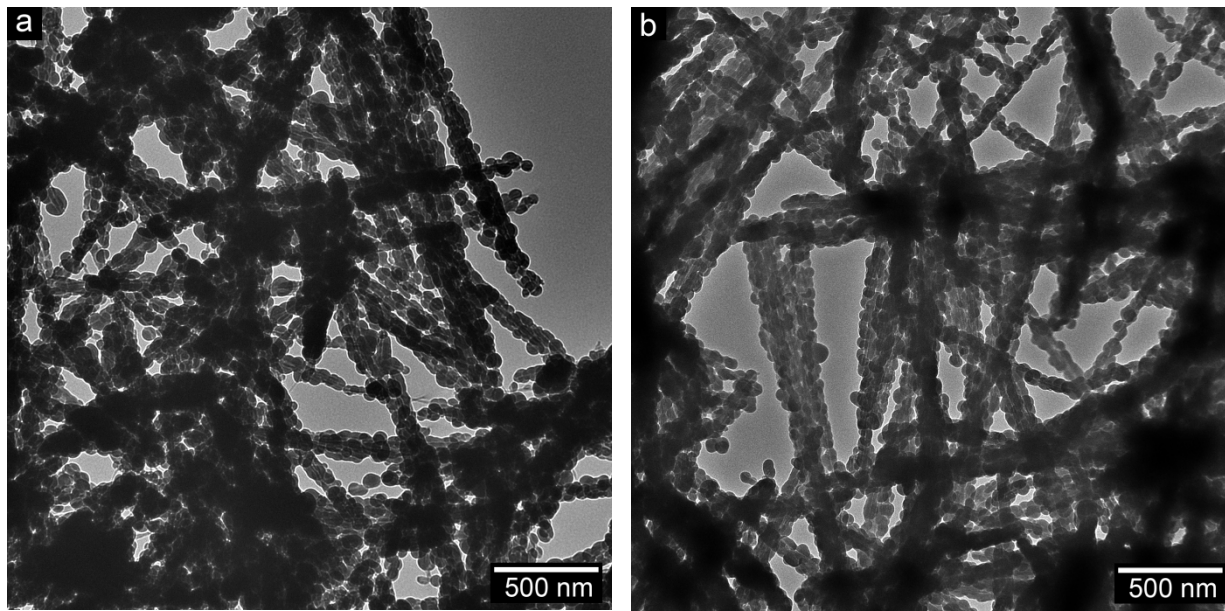


Fig. S2. Effect of ammonia concentration in 1 mg/mL CNF coating reactions, (a) Low ammonia concentration (0.28 mL, half of the reference concentration), (b) High ammonia concentration (1.14 mL, twice of the reference concentration)

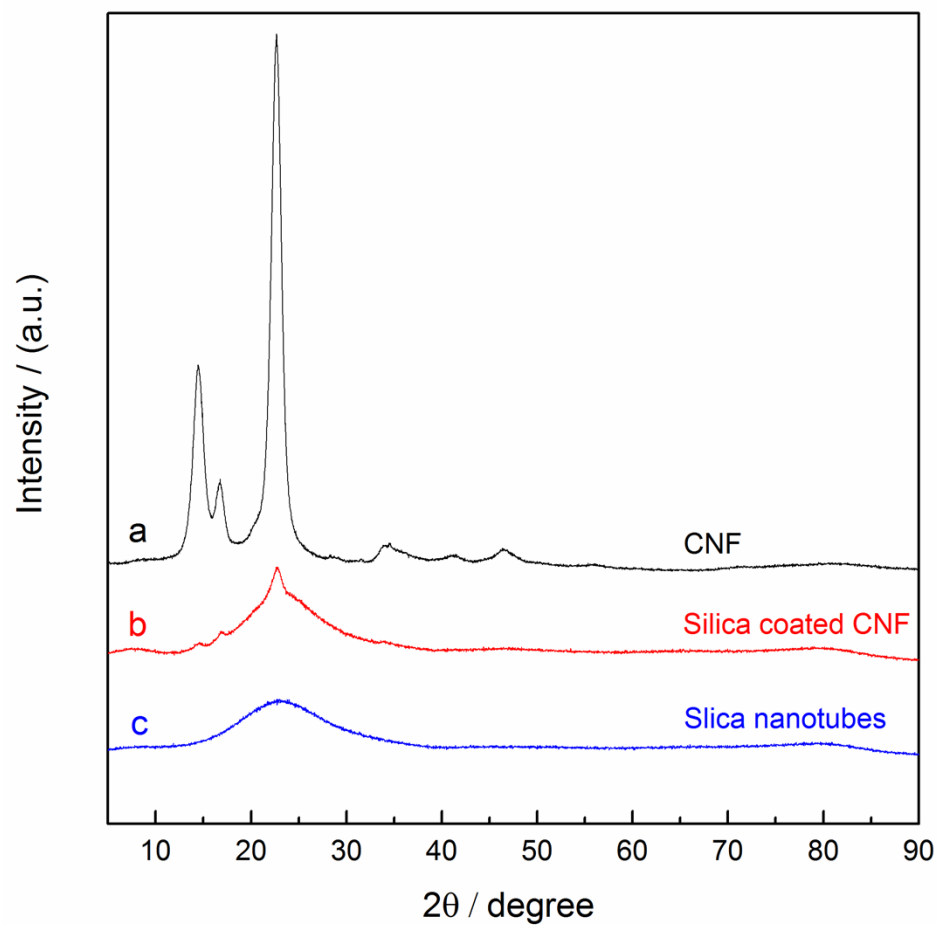


Fig. S3. X-ray diffraction of (a) CNF aerogels, (b) silica coated CNF aerogels, (c) silica coated CNF aerogels after burning at 400 °C for 6 h.