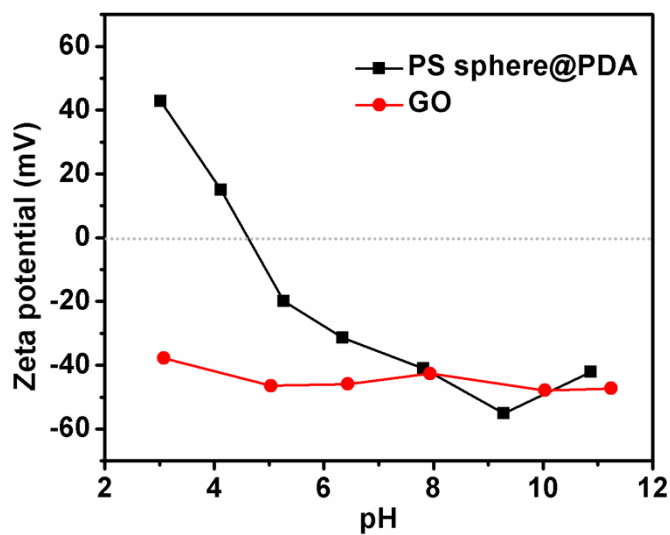


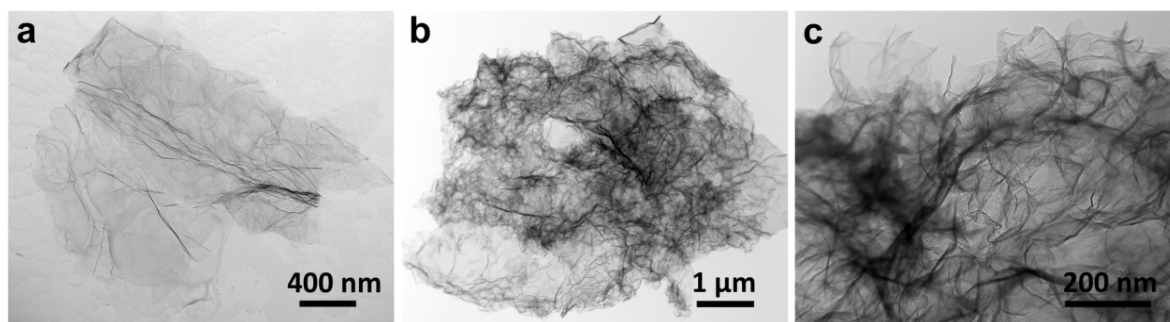
Electronic Supplementary Material (ESI)

**Tailor-made graphene aerogels with inbuilt baffle plates by charge-induced template-directed assembly for high-performance Li-S batteries**

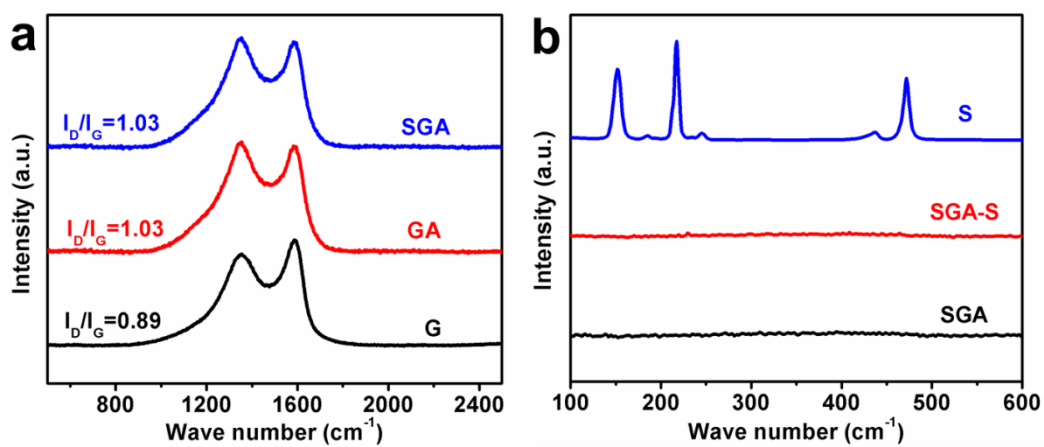
Changtai Zhao,<sup>#</sup> Chang Yu,<sup>#</sup> Mengdi Zhang, Juan Yang, Shaohong Liu, Mingyu Li, Xiaotong Han, Yanfeng Dong, and Jieshan Qiu\*



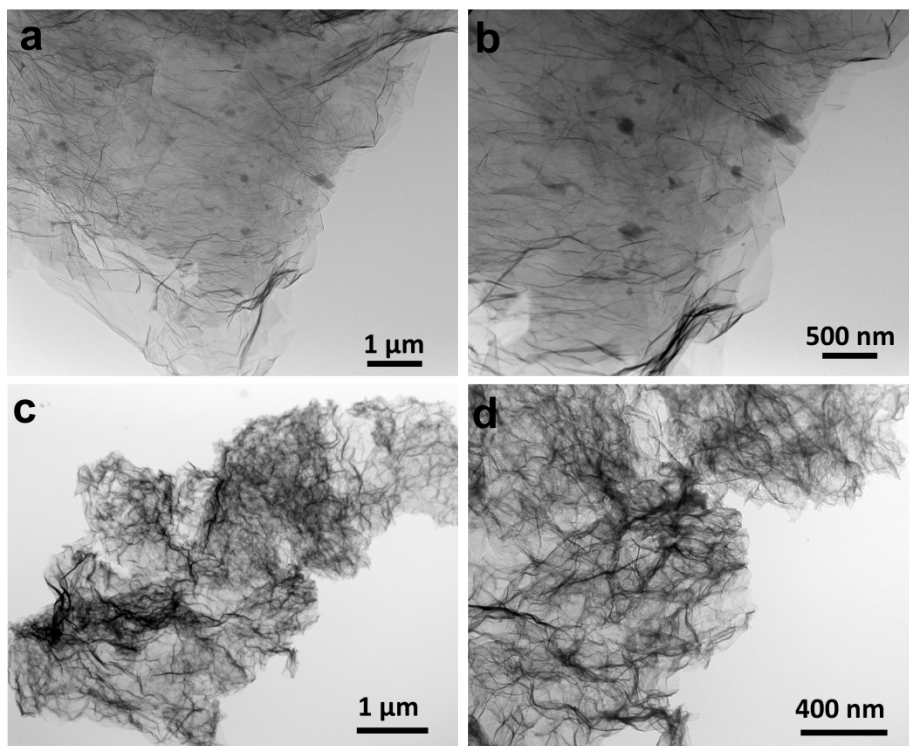
**Fig. S1** Zeta potentials of PS@PDA and GO in aqueous solutions under different pH conditions.



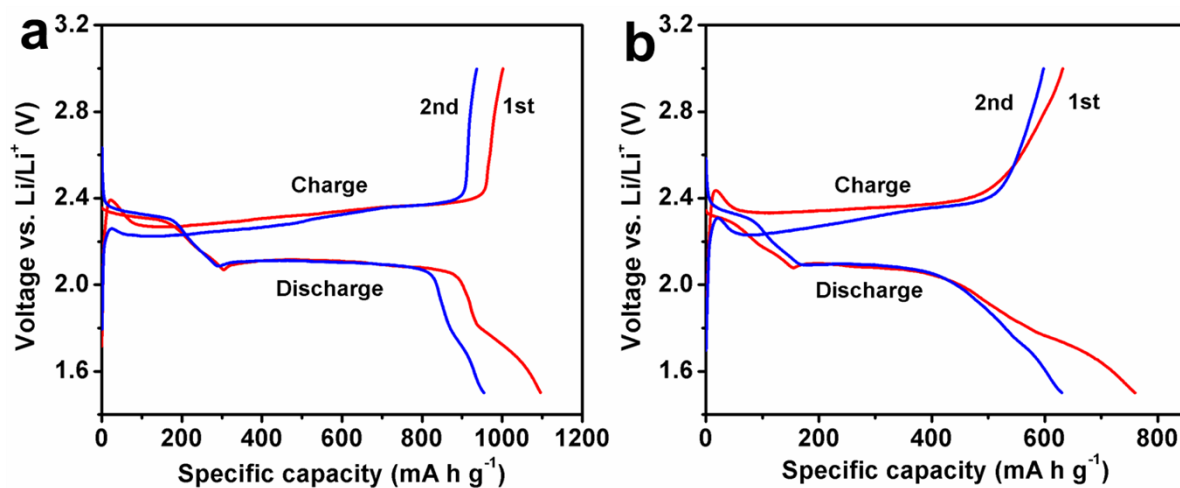
**Fig. S2** (a) TEM image of G; (b, c) TEM images of GA at different magnifications.



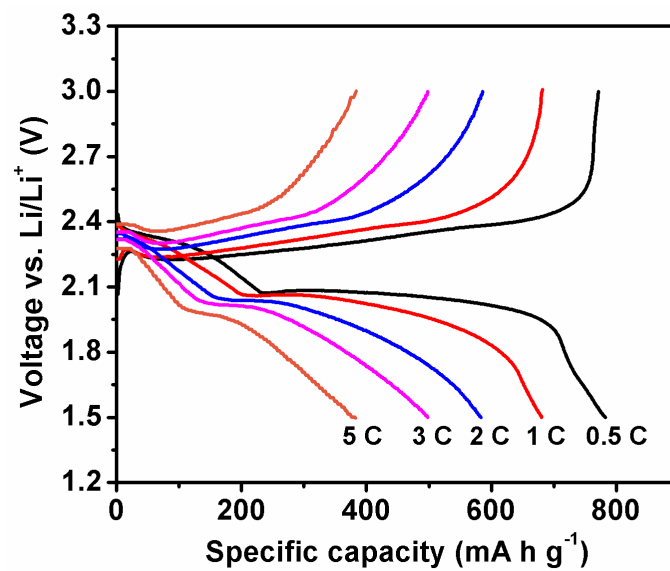
**Fig. S3** (a) The Raman spectra of SGA, GA, and G; (b) the Raman spectra of S, SGA-S, and SGA.



**Fig. S4** (a, b) TEM images of G-S at different magnifications; (c, d) TEM images of GA-S at different magnifications.



**Fig. S5** The first two charge-discharge curves of (a) GA-S and (b) G-S cathodes.



**Fig. S6** The charge-discharge curves of SGA-S cathode at different current densities.