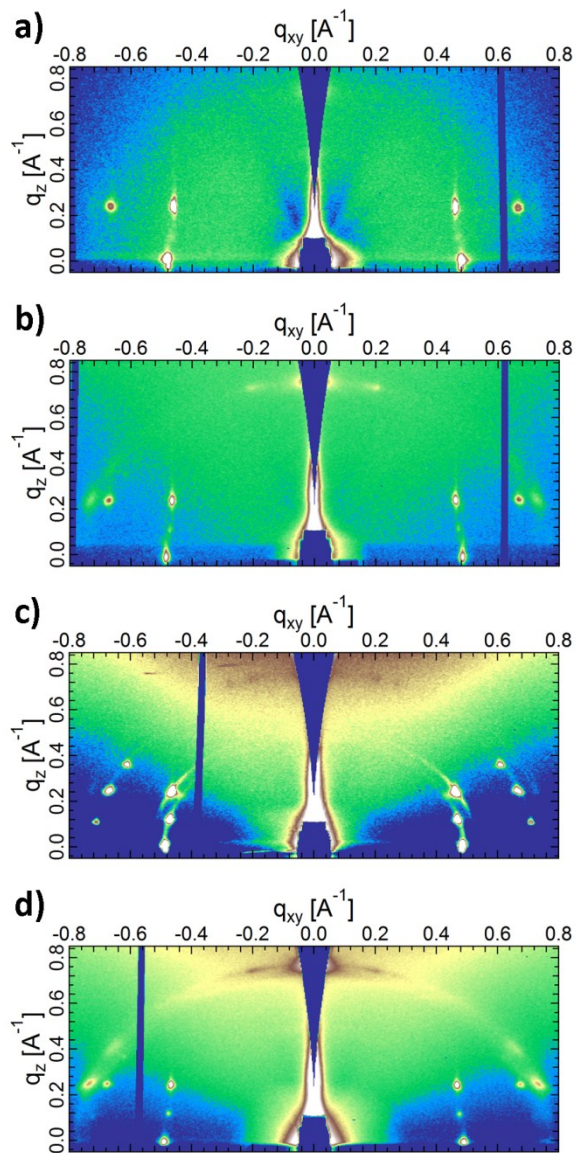


Supplemental Information

To allow the reader to clearly see the [111] reflection of the (111) orientation at $Q_{xy} = 0 \text{ \AA}^{-1}$ and $Q_z = 0.767 \text{ \AA}^{-1}$, the GIWAXS data from figure 2 was not converted to proper q-space, but instead is only approximately q-space. Thus, the same data, but converted to proper q-space, with missing wedge along the Q_z axis, has been included in the supplemental information as an additional figure.



SI figure 1 Caption:

GIWAXS data from figure 2, but converted to proper q-space, with missing wedge along the Qz axis, acquired at 0.15 Deg incidence angle on a) 5.5 nm C₆₀ / 25 nm CuPc / HOPG, b) 30 nm C₆₀ / 25 nm CuPc / HOPG, c) 30 nm C₆₀ / 150 nm CuPc / HOPG, d) 150 nm C₆₀ / 25 nm CuPc / HOPG.