

Electronic Supplementary Information

A clear coat from a water soluble precursor: a bioinspired paint concept

Juan Yang, Inge Bos, Wim Pranger, Anthonie Stuiver, Aldrik Velders, Martien A. Cohen Stuart,

Marleen Kamperman

Figure S1. ^1H NMR spectra of poly(methyl-DAA-AEMA) in a mixture of MeOD/ D_2O . The cross symbol 'x' in the spectra indicates the protons attributed to MeOD

Figure S2. UV-vis spectra of DAA-*p* in Milli-Q water (red line) and P(DAA-*co*-AEMA) in 0.1 M HCl aqueous solution (black line)

Figure S3. Pictures of P(DAA-*co*-AEMA), prepared at high pH, coated on polystyrene (left) and on stainless steel (right)

Figure S4. UV-vis spectra of a P(DAA-*co*-AEMA) film prepared at high pH on a quartz slide at different time points

Figure S5. Viscosity of PAEMA at different pH values as a function of shear rate

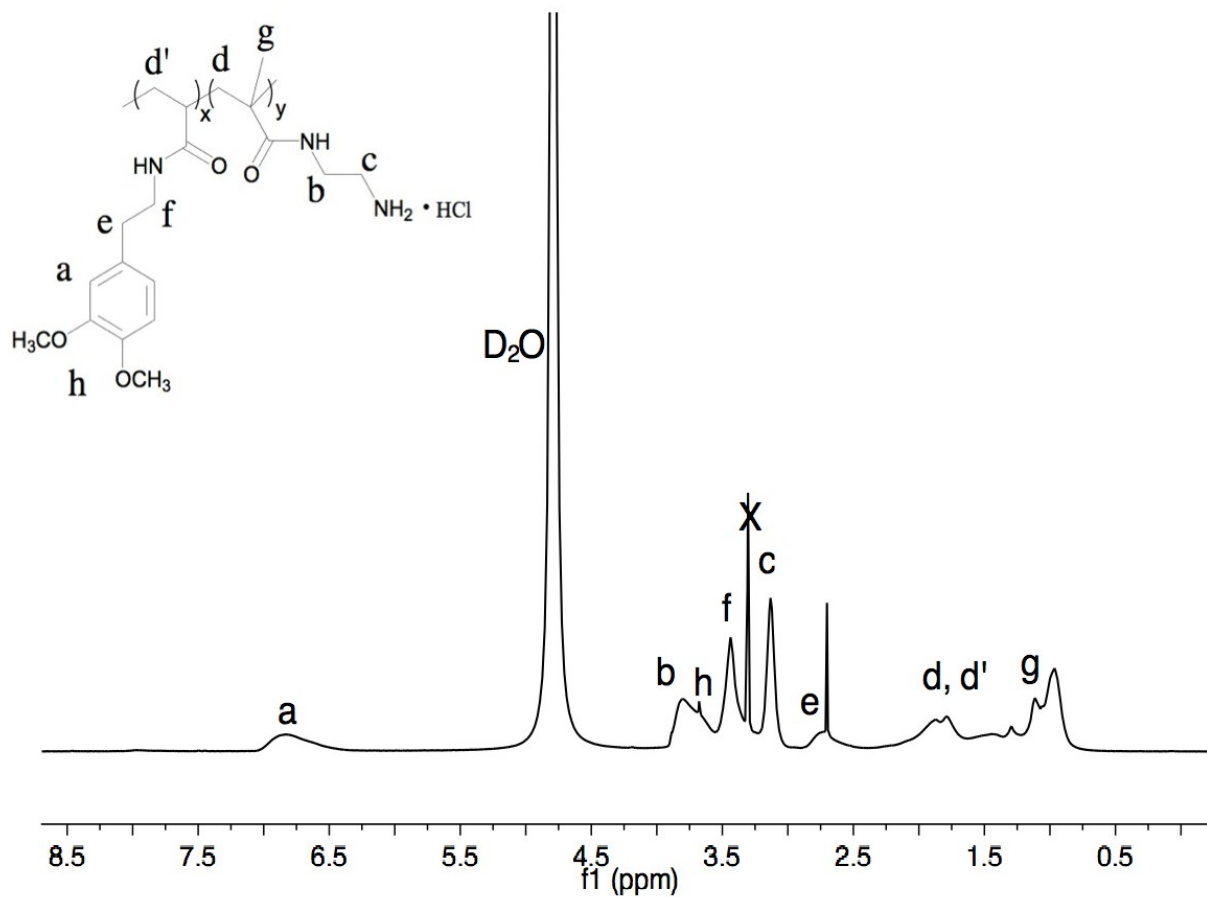


Figure S1. ¹H NMR spectra of poly(methyl-DAA-AEMA) in a mixture of MeOD/ D₂O. The cross symbol 'x' in the spectra indicates the protons attributed to MeOD

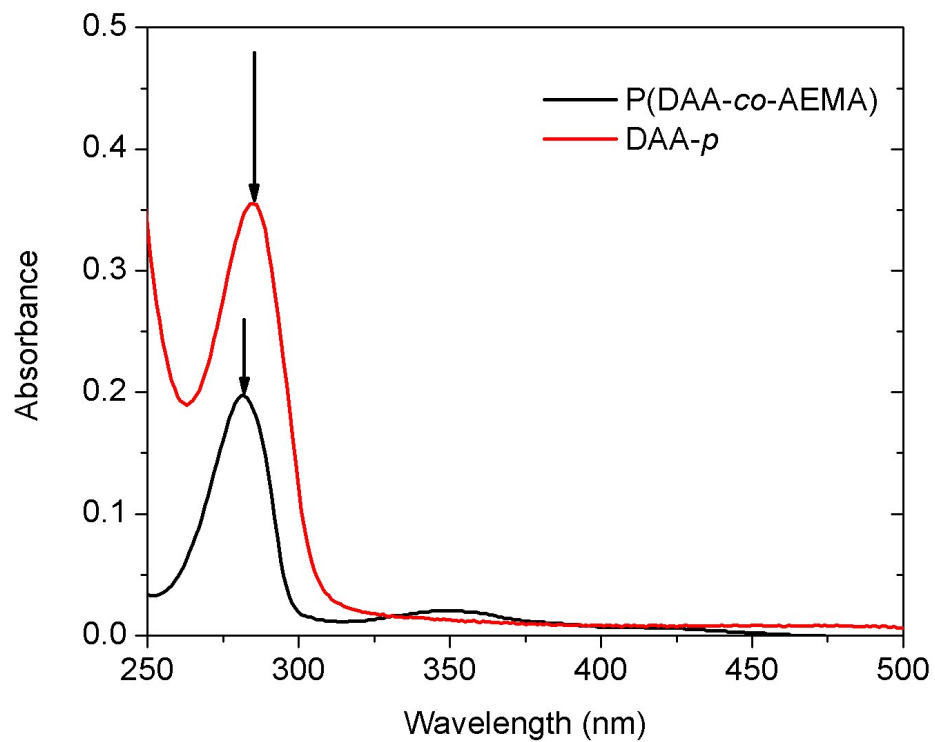


Figure S2. UV-vis spectra of DAA-*p* in Milli-Q water (red line) and P(DAA-*co*-AEMA) in 0.1 M HCl aqueous solution (black line)

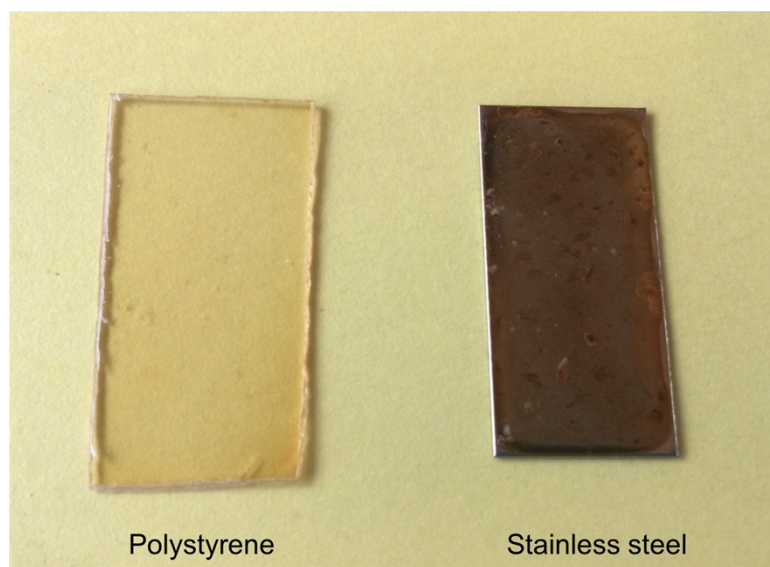


Figure S3. Pictures of P(DAA-*co*-AEMA), prepared at high pH, coated on polystyrene (left) and on stainless steel (right)

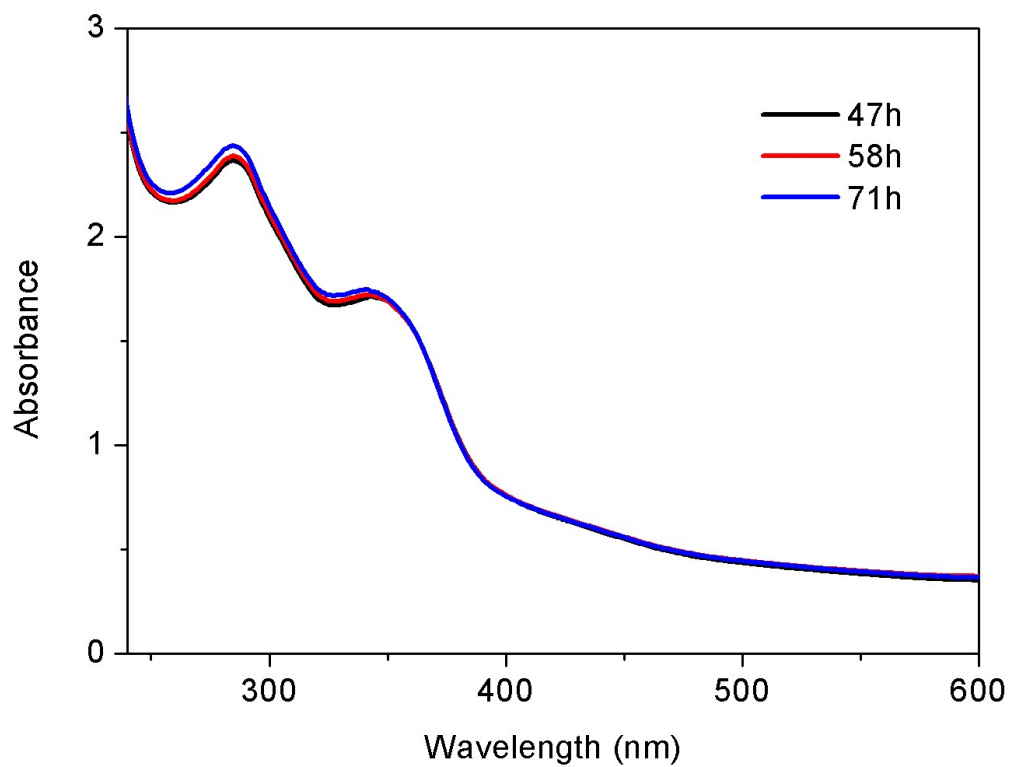


Figure S4. UV-vis spectra of a P(DAA-co-AEMA) film prepared at high pH on a quartz slide at different time points

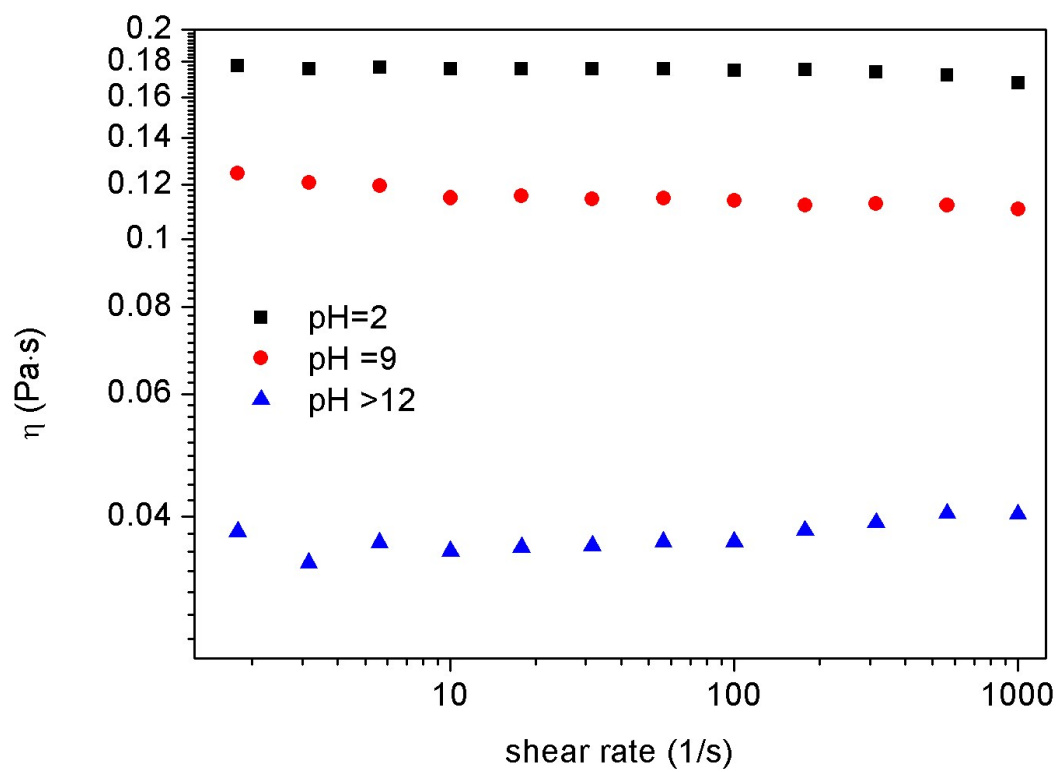


Figure S5. Viscosity of PAEMA at different pH values as a function of shear rate