

A shape memory supercapacitor and its application in smart energy storage textile

Yang Huang,^a Minshen Zhu,^a Zhengxia Pei,^a Qi Xue,^a Yan Huang,^a and Chunyi Zhi^{a,b,*}

^aDepartment of Physics and Materials Science, City University of Hong Kong, 83 Tat Chee Avenue, Kowloon, Hong Kong.

^bShenzhen Research Institute, City University of Hong Kong, Shenzhen, P. R. China

E-mail: cy.zhi@cityu.edu.hk; Fax: 852-3442-0538; Tel:852-3442-7891

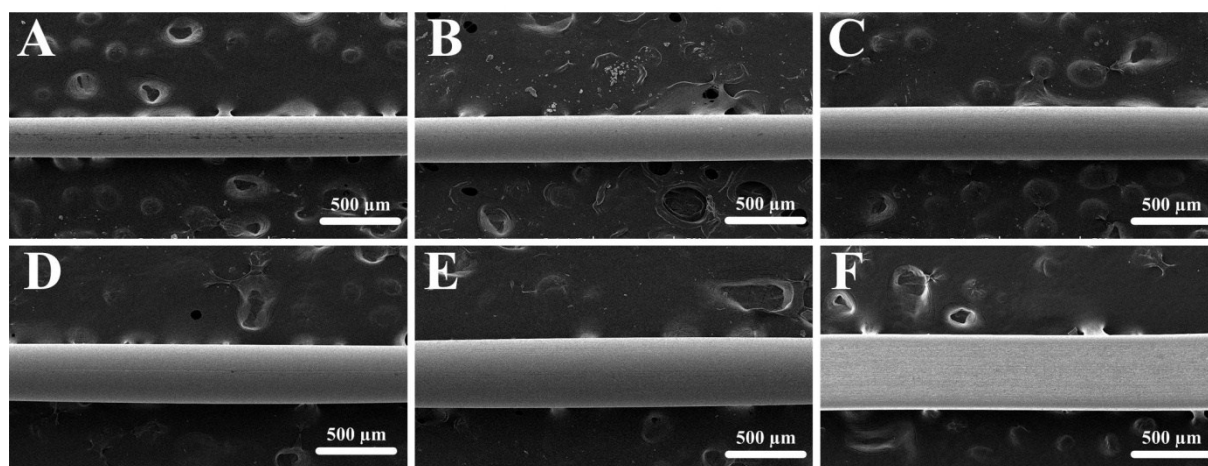


Fig. S1 SEM images of NiTi SMA wires with different diameters.

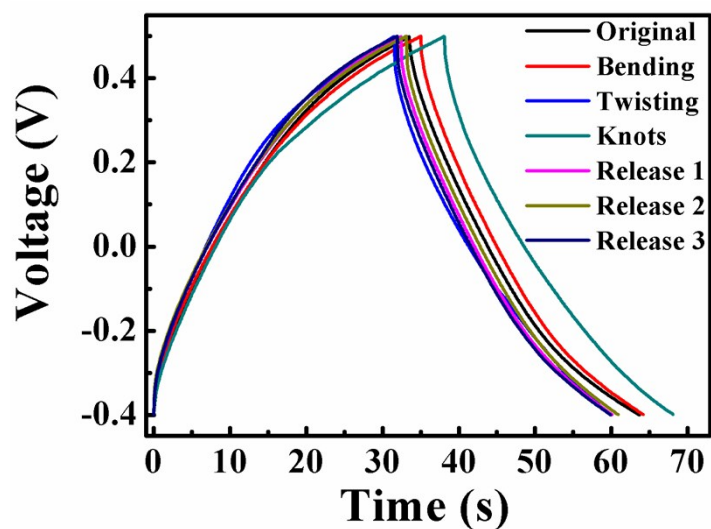


Fig. S2 GCD curves obtained at a current density of 1 mA under different deformations.

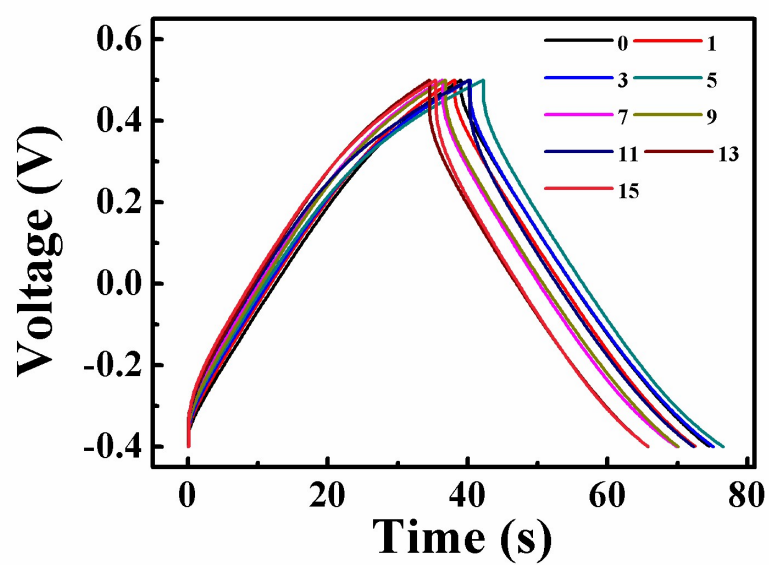
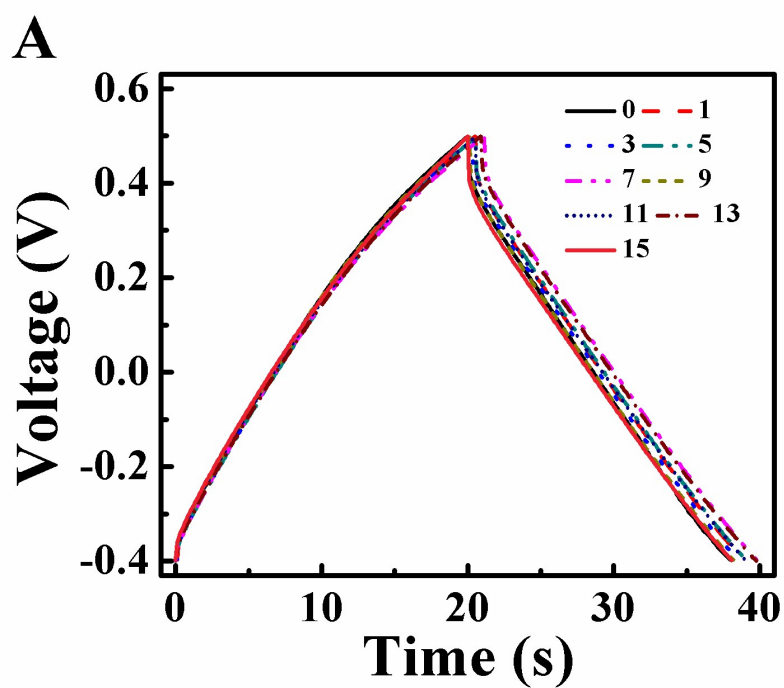


Fig. S3 GCD curves obtained at a current density of 1 mA after shape recovery for different cycles.



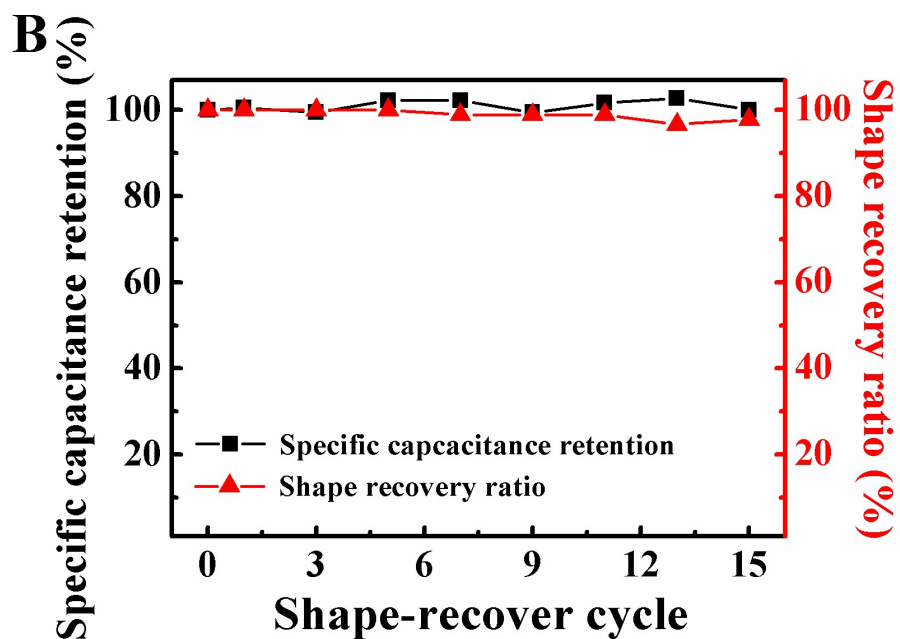
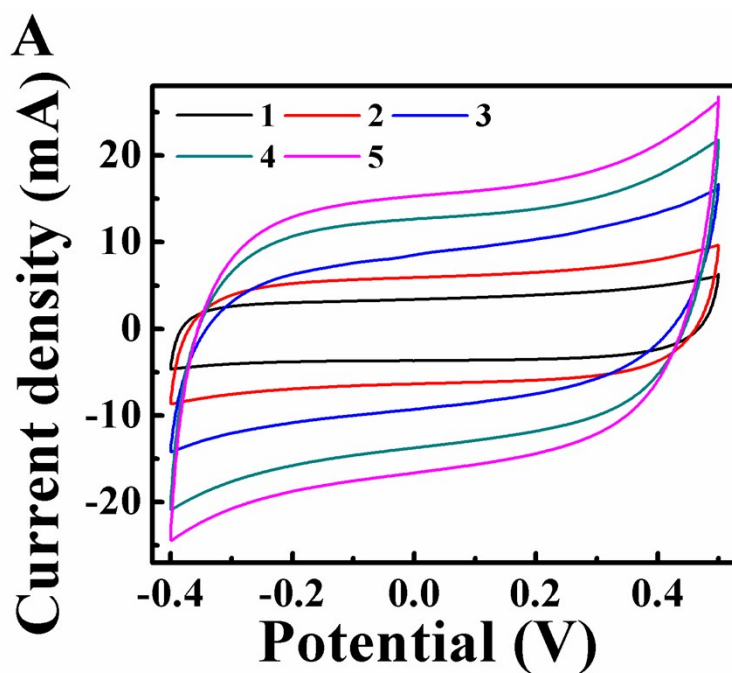


Fig. S4 (a) GCD curves obtained at a current density of 1 mA after shape recovery for different cycles at different region. (b) Capacitance retention and shape recovery ratio of the SMSC before and after shape recovery for different cycles at different region.



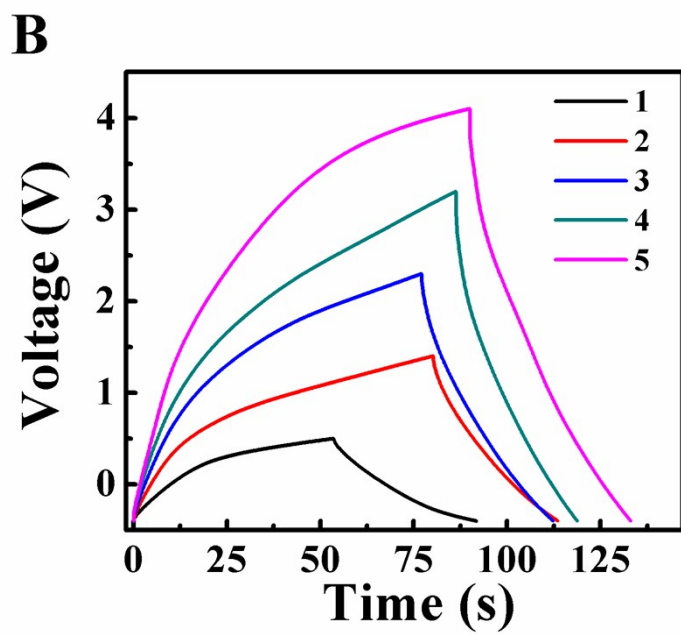


Fig. S5 (a) CVs obtained at a scan rate of 100 mV s^{-1} of the devices in parallel. (b) GCD curves obtained at a current density of 1 mA of the devices in series.