

**Supplementary Material**

**Decoration of ultralong carbon nanotubes with  $\text{Cu}_2\text{O}$  nanocrystals: a hybrid platform for enhanced photoelectrochemical  $\text{CO}_2$  reduction**

**Egon Kecsenvity<sup>a,d</sup>, Balázs Endrődi<sup>a,b</sup>, Zsuzsanna Pápa<sup>e</sup>, Klára Hernádi<sup>d</sup>, Krishnan Rajeshwar<sup>c,\*</sup>, and Csaba Janáky<sup>a,b,\*</sup>**

<sup>a</sup> MTA-SZTE „Lendület” Photoelectrochemistry Research Group, Rerrich Square 1, Szeged, H-6720, Hungary

<sup>b</sup> Department of Physical Chemistry and Materials Science, University of Szeged, Rerrich Square 1, Szeged, H-6720, Hungary

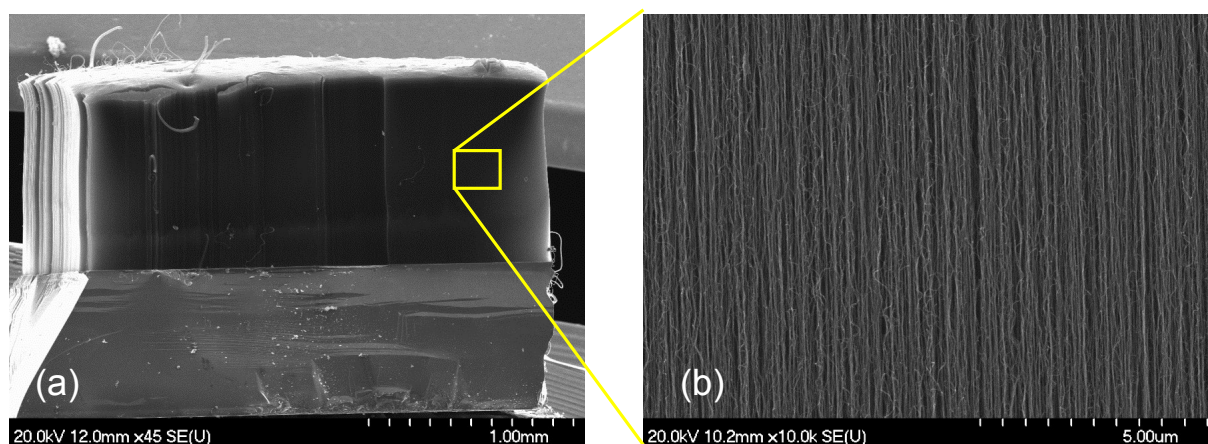
<sup>c</sup> Department of Chemistry and Biochemistry, University of Texas at Arlington, Arlington, Texas 76019, USA

<sup>d</sup> Department of Applied and Environmental Chemistry, University of Szeged, Rerrich Square 1, Szeged, H-6720, Hungary

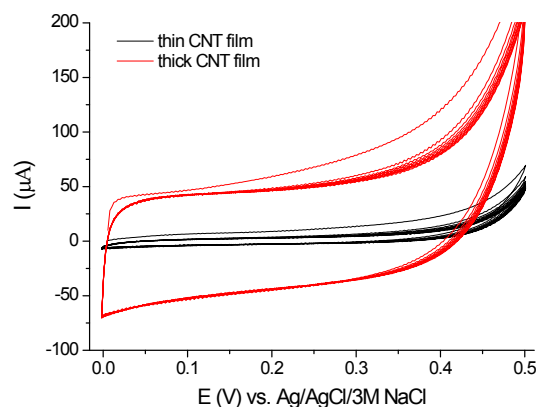
<sup>e</sup> Department of Optics and Quantum Electronics, University of Szeged, Dóm Square 9, Szeged, H-6720, Hungary

\*E-mail:rajeshwar@uta.edu (K.R.), janaky@chem.u-szeged.hu (C. J.)

Figures:

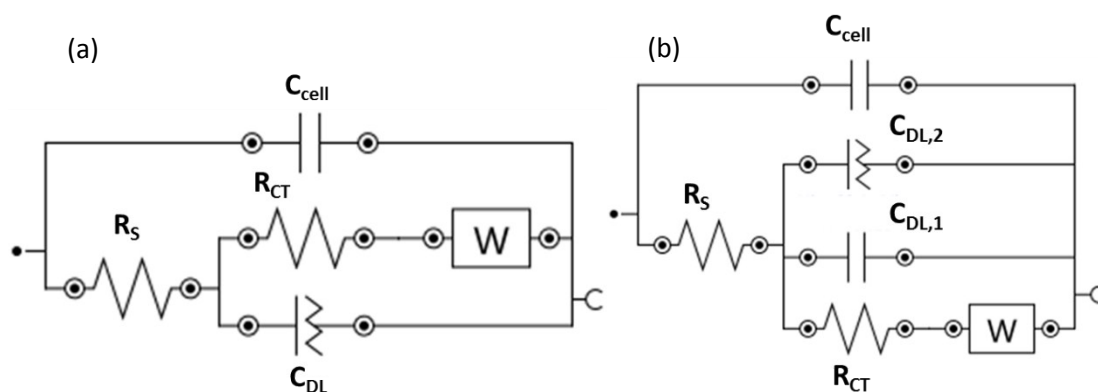


**Fig. S1** SEM images of the CVD synthesized MWCNT arrays at different magnifications.

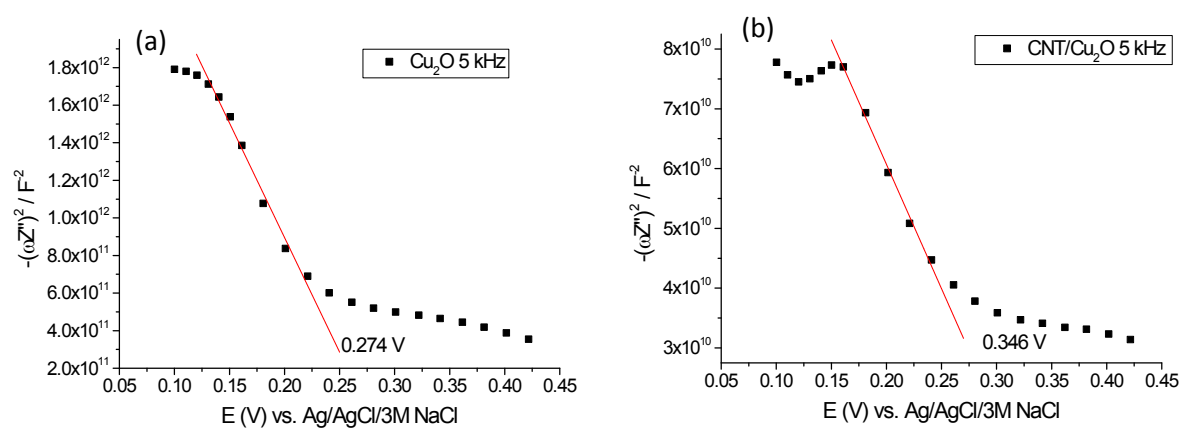


**Fig. S2** CV traces of two CNT/ITO films with different CNT loading (10 and 50  $\mu\text{g cm}^{-2}$ ) registered at 50  $\text{mV s}^{-1}$  sweep rate in the same Cu-lactate solution (pH=9) which was used for the subsequent electrodeposition.

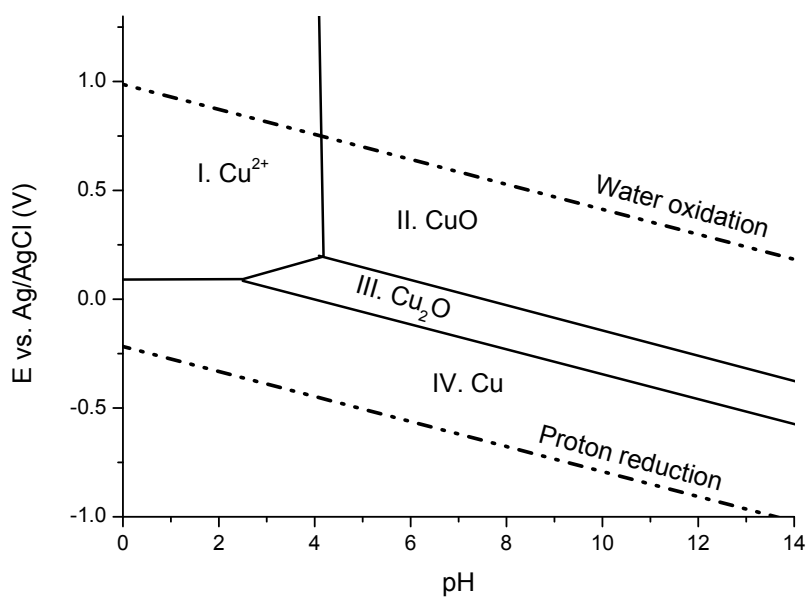
Slightly modified Randles equivalent circuit was applied to evaluate the data from electrochemical impedance measurements (Fig. S3). This circuit consists of an active solution (electrolyte) resistance ( $R_s$ ) coupled in series with the parallel combination of the Faradaic impedance and the double-layer capacitance. Faradaic impedance of such electrode is commonly described with series combination of the charge transfer resistance ( $R_{CT}$ ) and a Warburg element ( $W$ ). The double layer capacitance was defined by a constant phase element. Capacitance of the cell (capacitor formed from the working and counter electrodes) was also introduced in the model, since it has significant contribution to the impedance at high frequencies (typically above 100 kHz). In the case of the CNT-containing electrode, the model was improved with an additive, parallel combined capacitance element to describe the new electrode-electrolyte surface.



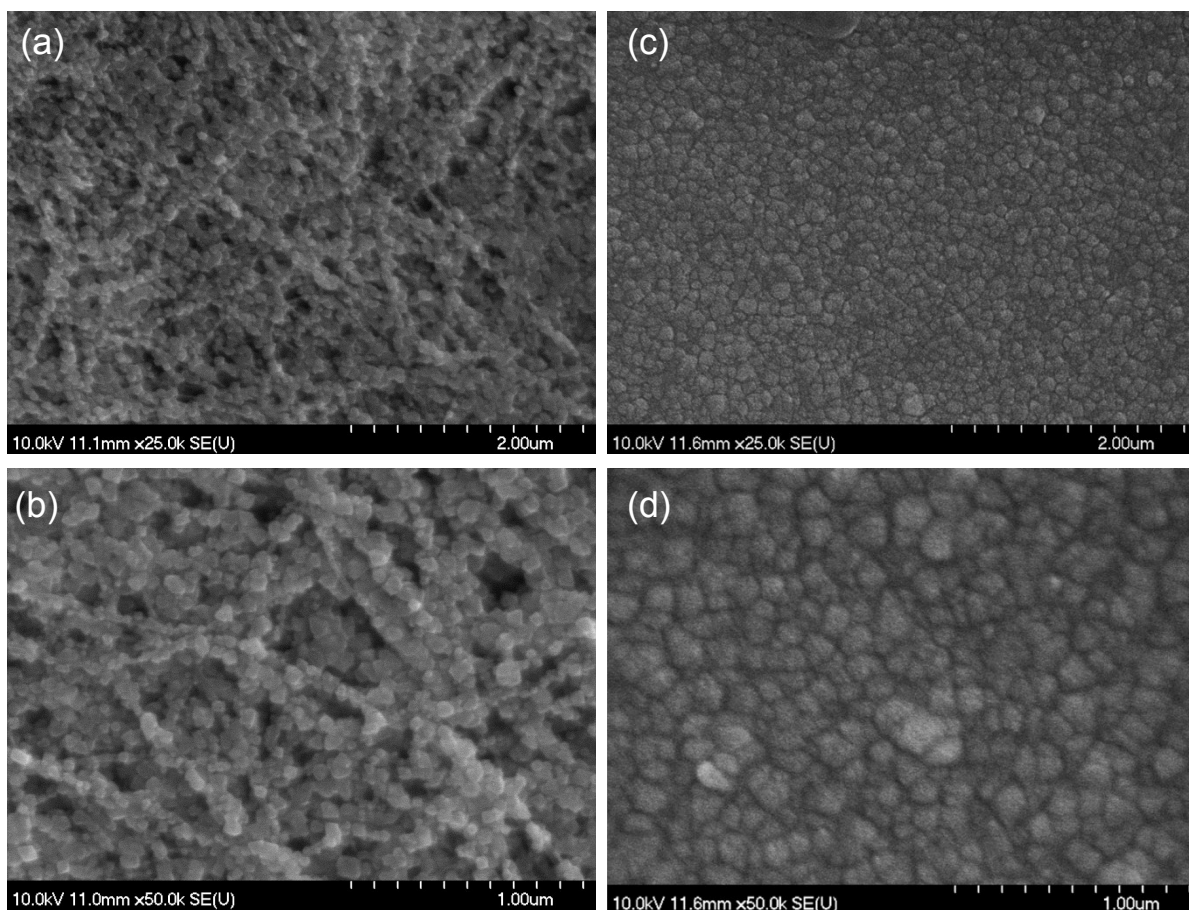
**Fig. S3** Equivalent circuits used for the fitting of the impedance spectra for: (a)  $\text{Cu}_2\text{O}$  and (b) CNT/ $\text{Cu}_2\text{O}$  electrodes.



**Fig. S4** Mott-Schottky plots recorded in 0.1 M sodium acetate solution at 5 kHz for (a)  $\text{Cu}_2\text{O}$  and (b) CNT/ $\text{Cu}_2\text{O}$  electrodes.



**Fig. S5** Pourbaix diagram of Cu.



**Fig. S6** Comparison of SEM images recorded for Cu<sub>2</sub>O/CNT (a, b) and Cu<sub>2</sub>O (c, d) films deposited with 200 mC charge.