

SUPPORTING INFORMATION

Influence of the Synthetic Method on the Properties of Two-Photon-Sensitive Mesoporous Organosilica Nanoparticles

Jonas G. Croissant*,^a Olivier Mongin*,^b Vincent Hugues,^c Mireille Blanchard-Desce,^c Xavier Cattoën,^d Michel Wong Chi Man,^a Vanja Stojanovic,^e Clarence Charnay,^a Marie Maynadier,^{e,f} Magali Gary-Bobo,^e Marcel Garcia,^e Laurence Raehm,^a and Jean-Olivier Durand*.^a

a) Institut Charles Gerhardt Montpellier, UMR-5253 CNRS-UM2-ENSCM-UM1cc 1701, Place Eugène Bataillon F-34095 Montpellier cedex 05, France. Fax: +33-467-143-852, E-mails: durand@um2.fr, jonasc@chem.ucla.edu

b) Institut des Sciences Chimiques de Rennes, CNRS UMR 6226 Université Rennes 1 Campus Beaulieu F-35042 Rennes Cedex, France. E-mail : olivier.mongin@univ-rennes1.fr

c) Université Bordeaux, Institut des Sciences Moléculaires, UMR CNRS 5255, 351 Cours de la Libération, F-33405 Talence Cedex, France.

d) Institut NEEL, CNRS, and Université Grenoble Alpes, F-38042 Grenoble, France.

e) Institut des Biomolécules Max Mousseron UMR 5247 CNRS; UM 1; UM 2 - Faculté de Pharmacie, 15 Avenue Charles Flahault, 34093 Montpellier Cedex 05, France.

f) NanoMedSyn, Faculté de Pharmacie, Montpellier cedex 05, France.

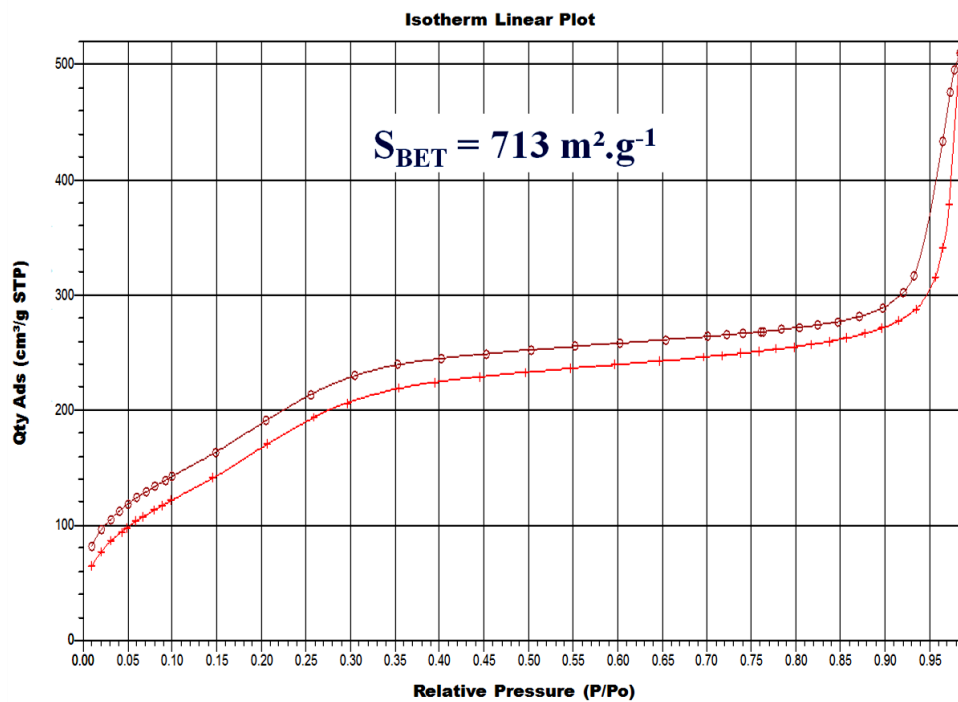


Figure S1. N₂-adsorption-desorption isotherm of M2PS-1 NPs.

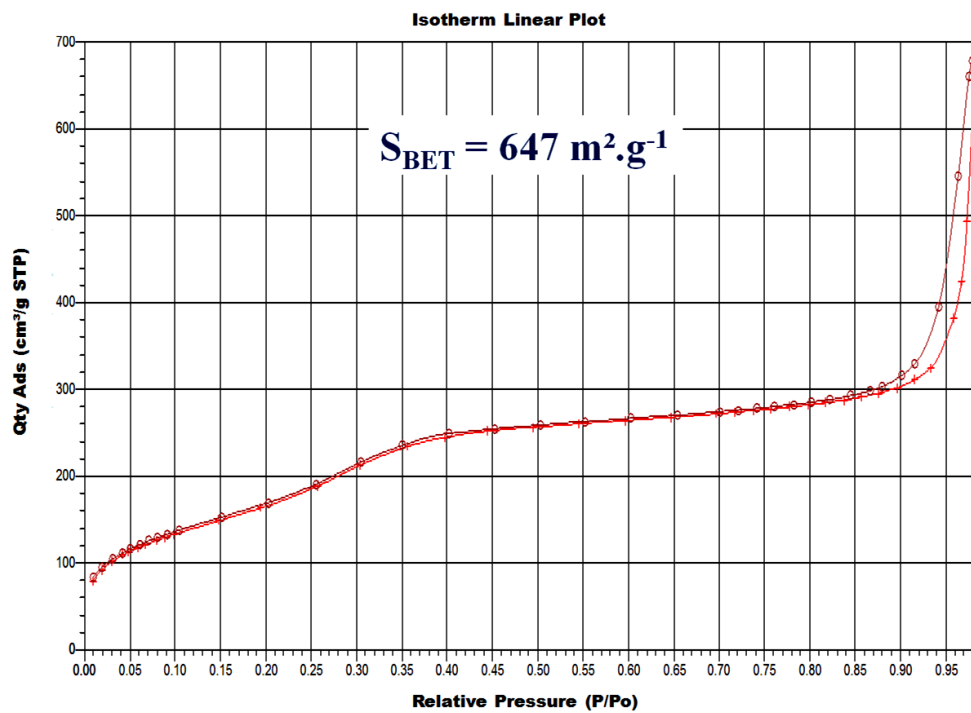


Figure S2. N₂-adsorption-desorption isotherm of M2PS-2 NPs.

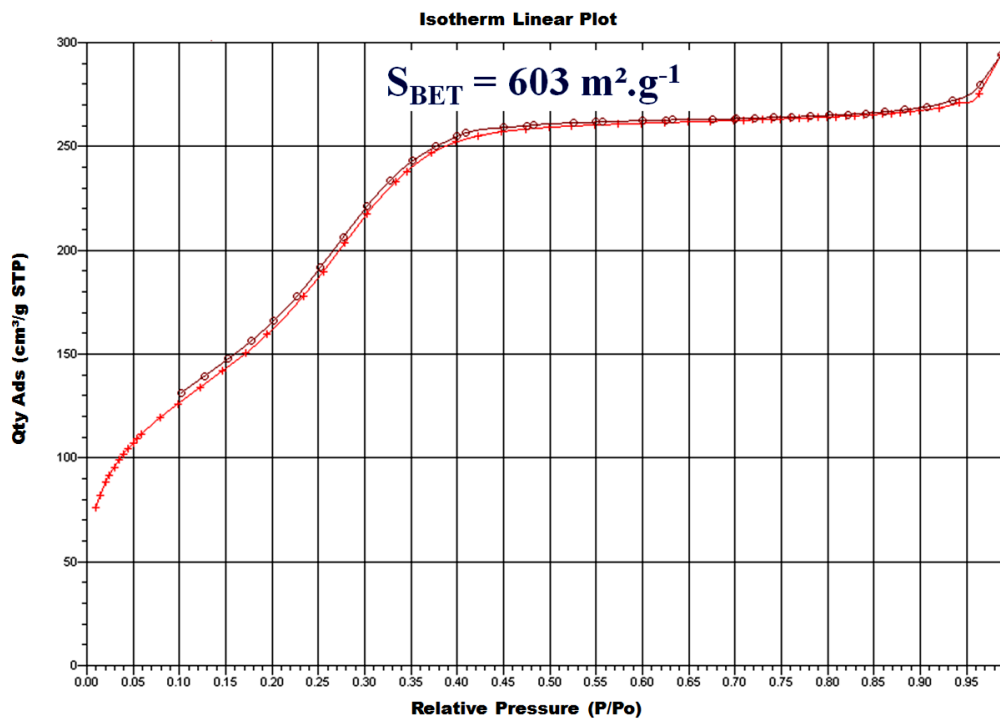


Figure S3. N₂-adsorption-desorption isotherm of M2PS-3 NPs.

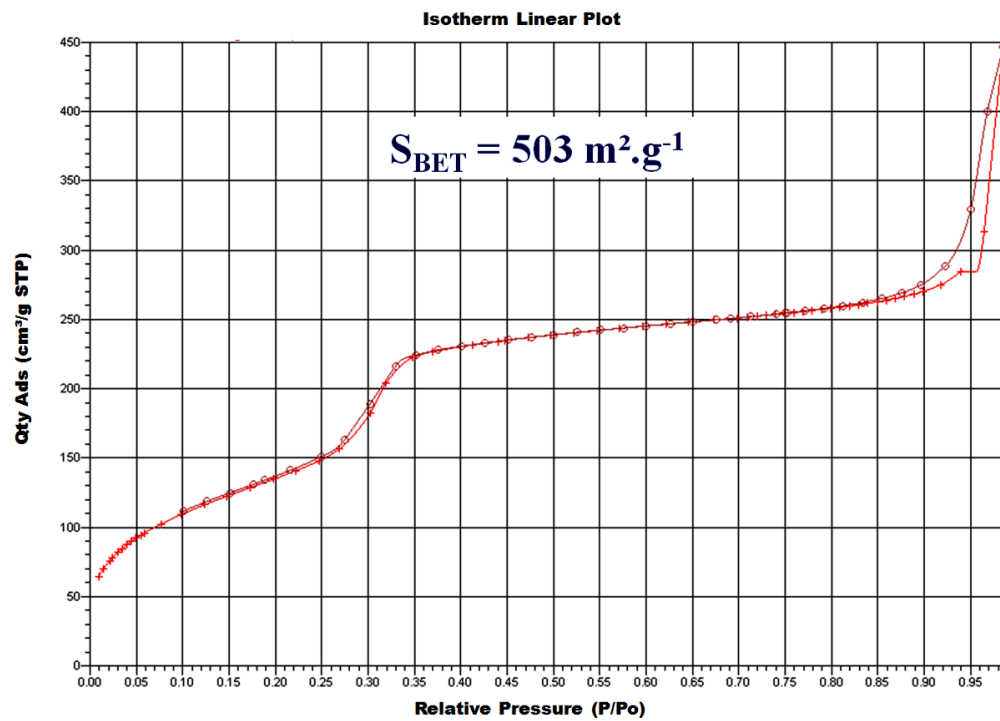


Figure S4. N₂-adsorption-desorption isotherm of M2PS-4 NPs.

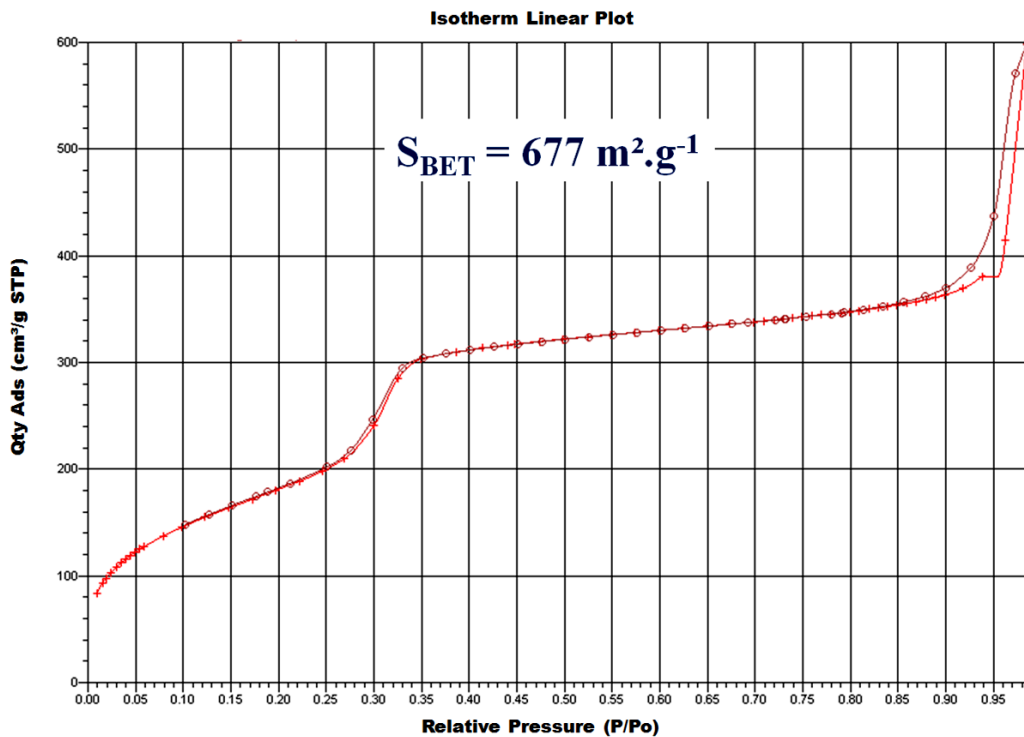


Figure S5. N₂-adsorption-desorption isotherm of M2PS-5 NPs.

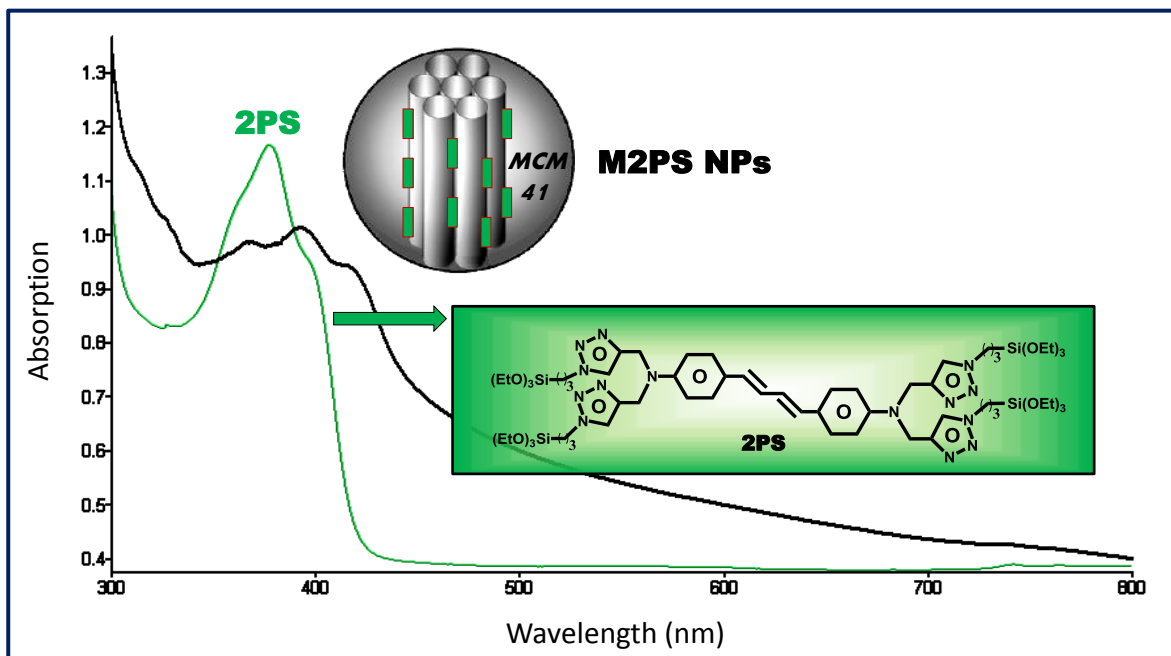


Figure S6. UV-Visible spectra of the 2PS precursor and M2PS-1 NPs in ethanol.

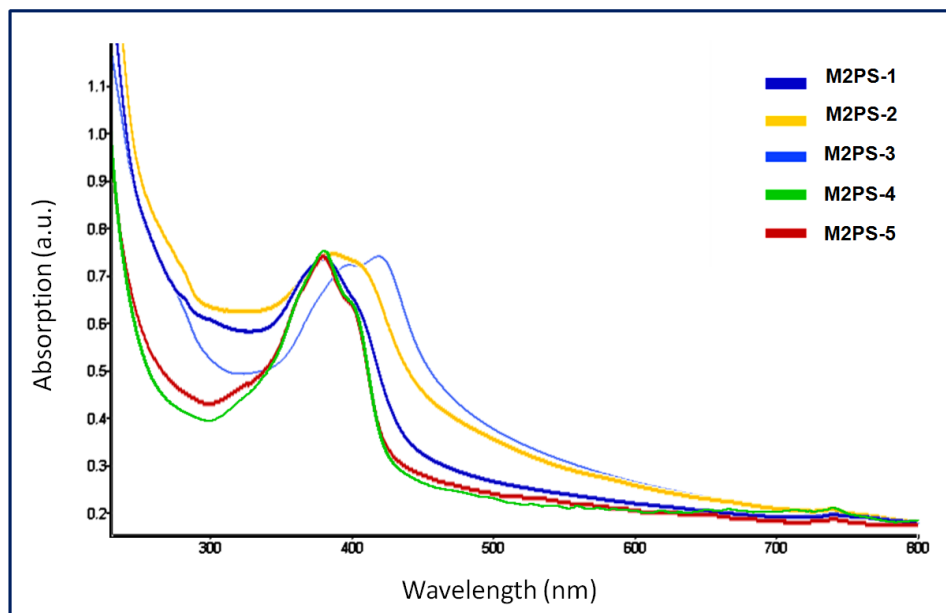


Figure S7. Overlaid UV-Visible spectra of M2PS NPs in ethanol depicting the bathochromic effect involved in the 2PS moieties of M2PS-1 to M2PS-3 NPs.

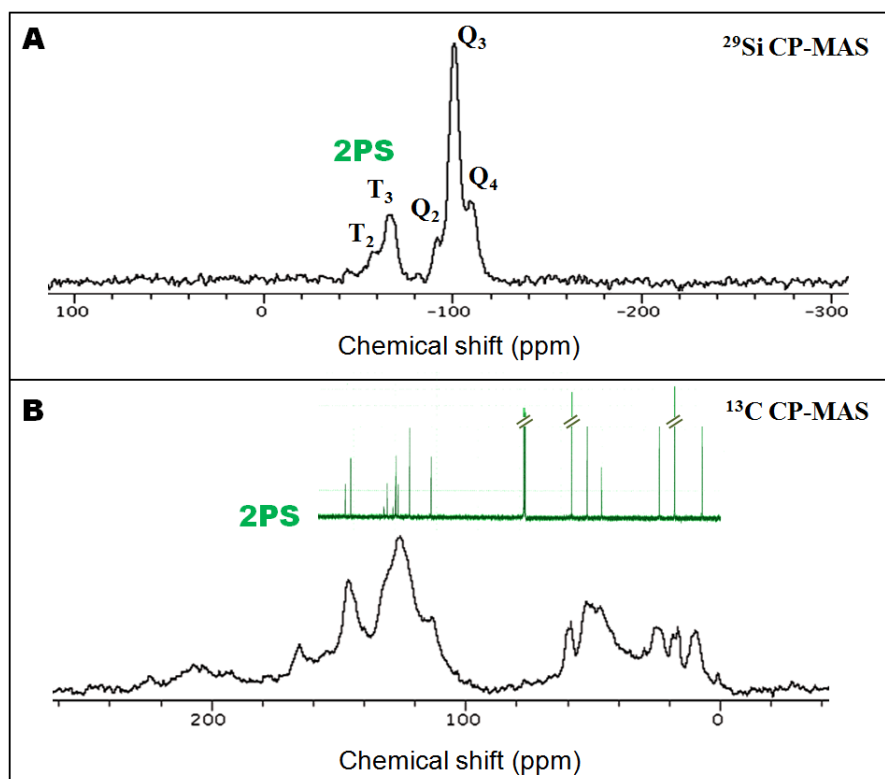


Figure S8. Solid state NMR ^{29}Si (A) and ^{13}C (B) CPMAS spectra on M2PS-4 NPs.

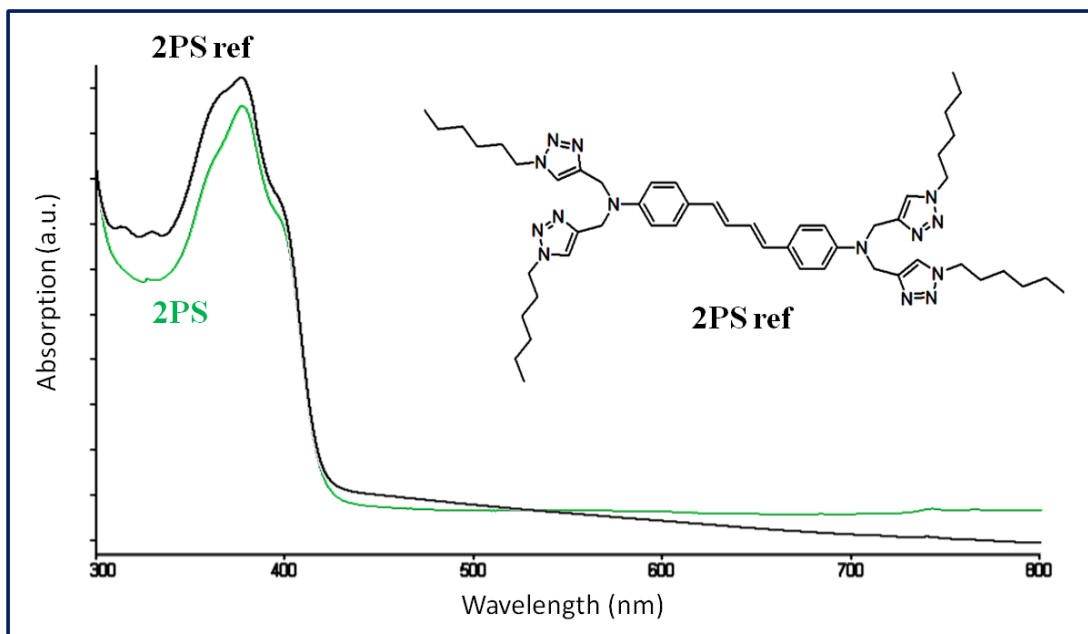


Figure S9. UV-Visible spectra of the 2PS and 2PS ref fragments in ethanol.

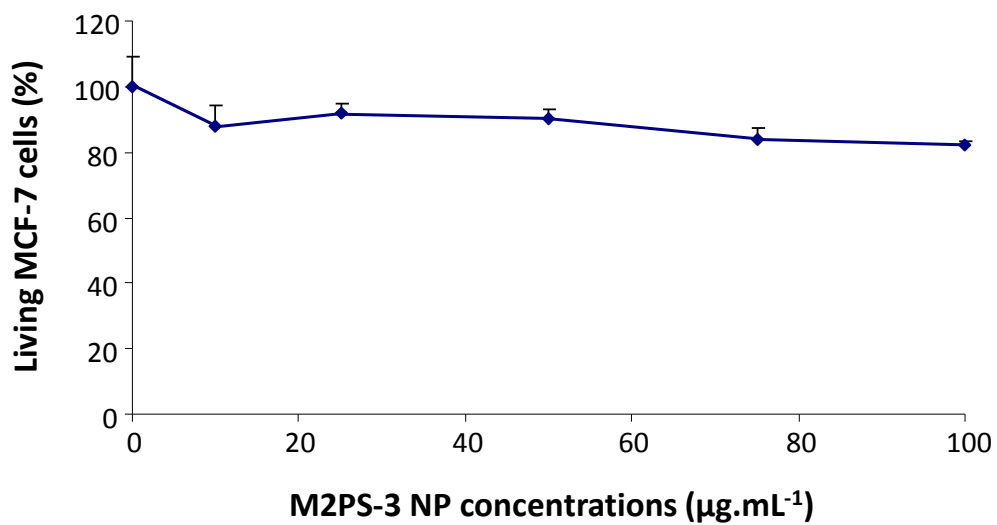


Figure S10. Cytotoxic study of increasing concentrations of M2PS-3 NPs incubated three days with MCF-7 cells. Values are means \pm SD of three experiments.