

SUPPLEMENTARY INFORMATION

for

An integrin-targeting nanosystem as the carrier of a selenadiazole derivative to induce ROS-mediated apoptosis in bladder cancer cells: from rational design to action mechanisms

*Yifan Wang^a, Wenying Li^a, Yahui Yang^a, Qinsong Zeng^b, Ka-Hing Wong^{c,d},
Tianfeng Chen^{a*}*

^a Department of Chemistry, Jinan University, Guangzhou 510632, China

^b Department of Urology, General Hospital of Guangzhou Military Command of
PLA, Guangzhou 510010, China

^c Department of Applied Biology and Chemical Technology, The Hong Kong
Polytechnic University, Hunghom, Kowloon, Hong Kong

^d Shenzhen Key Laboratory of Food Biological Safety Control, Food Safety and
Technology Research Centre, PolyU Shenzhen Research Institute, Shenzhen, PR
China

CORRESPONDING AUTHORS

*Tianfeng Chen, tchentf@jnu.edu.cn;

Tel: +86 20-85225962; Fax: +86 20 85221263;

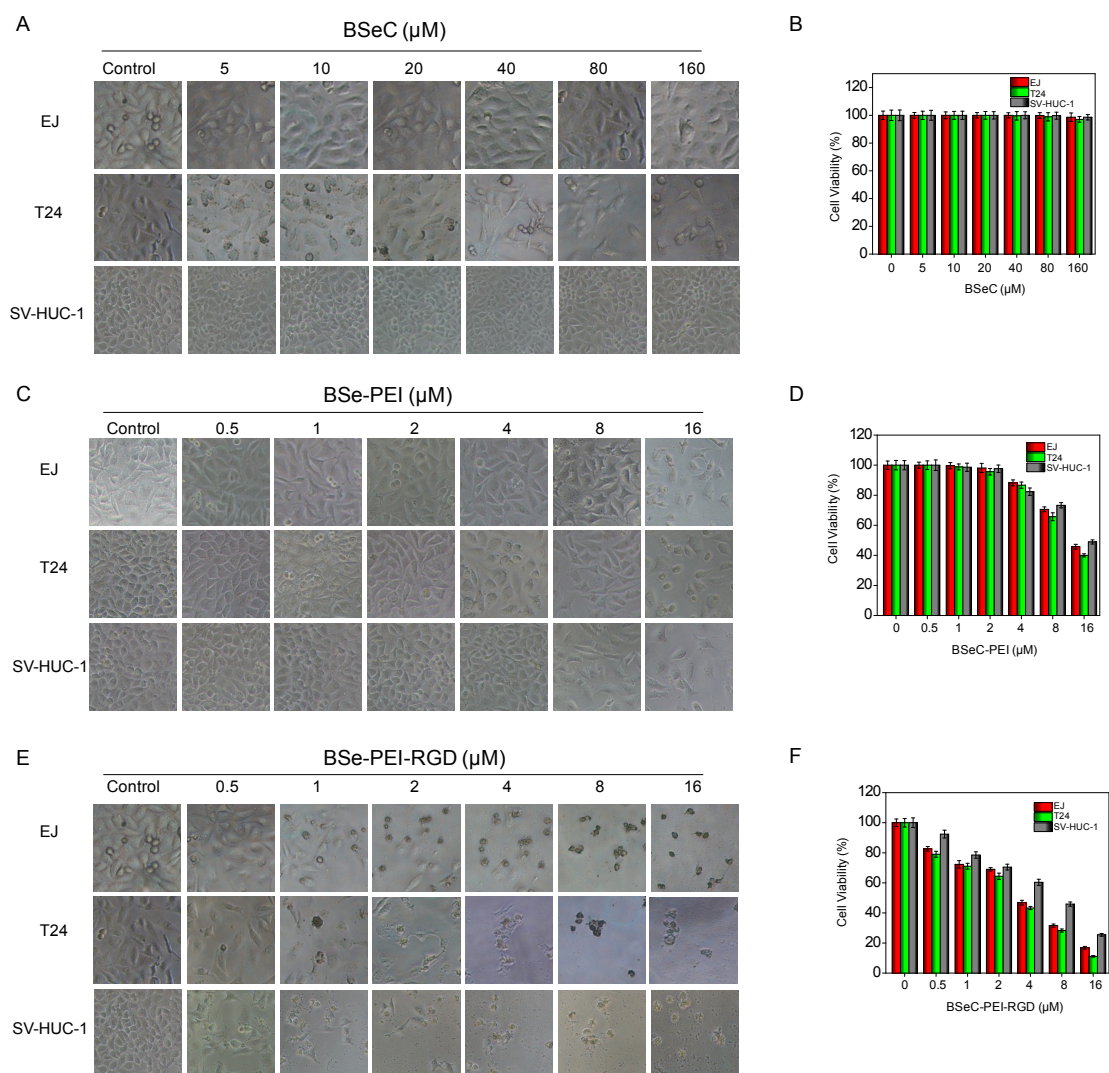


Figure S1. The cell picture of EJ, T24 and SV-HUC-1 treated with BSeC (A), BSeC-PEI (C) and BSeC-PEI-RGD (E) and cell viability of BSeC (B), BSeC-PEI (D) and BSeC-PEI-RGD (F) against on EJ, T24 and SV-HUC-1 cells , which was measured by MTT assay (72 h).

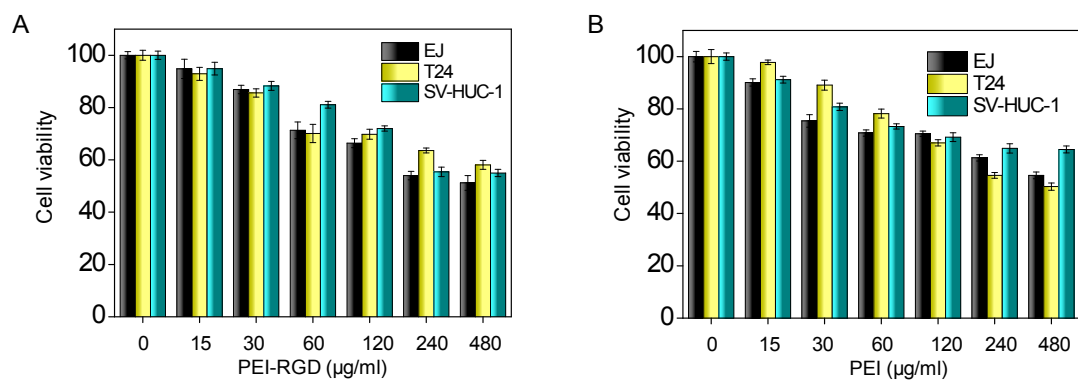


Figure S2. Cell viability of PEI-RGD (A) and PEI (B) against on EJ, T24 and SV-HUC-1 cells , which was measured by MTT assay (72 h).

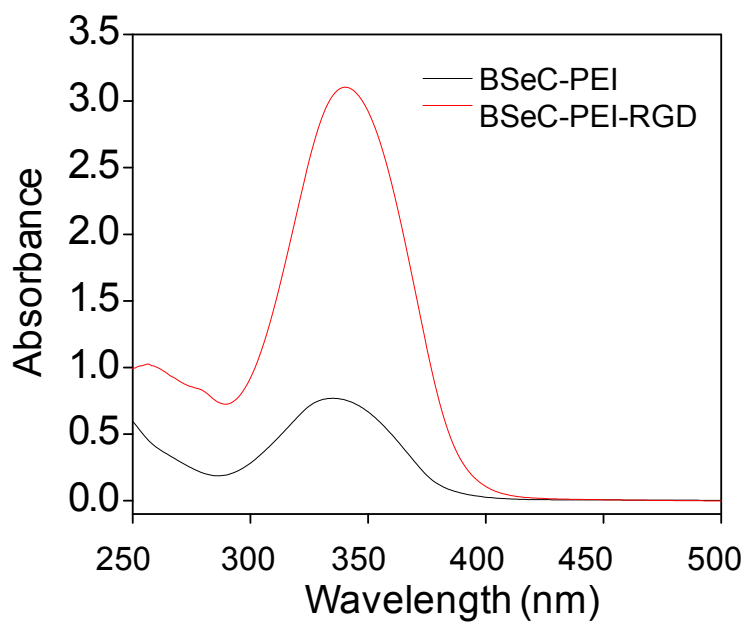


Figure S3. The UV-vis spectra of BSeC-PEI and BSeC-PEI-RGD with the maximum of the peak of absorbance at 335 nm and 340 nm.

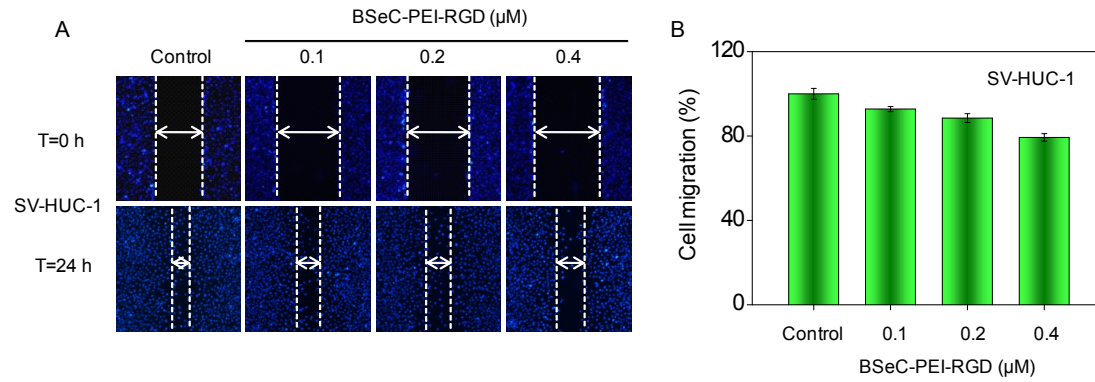


Figure S4. Effects of BSeC-PEI-RGD on SV-HUC-1 normal bladder cells migration.

(A) The images of SV-HUC-1 cells wound healing assay were acquired at 0 and 24 h after wounding. (B) Results were expressed as percentages of the fluorescence intensity of control EJ cells with different characters are statistically different at $*P<0.05$, $**P<0.01$.

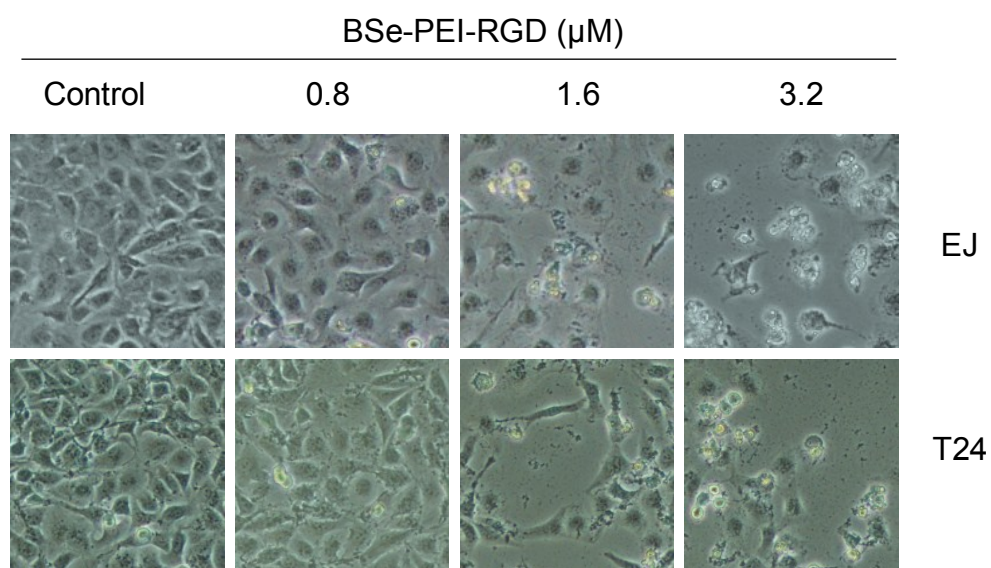


Figure S5. The cell picture of EJ, T24 and SV-HUC-1 treated with different concentration BSeC-PEI-RGD analyzed by flow cytometry.