

Protein Release from Highly Charged Peptide Hydrogel Networks

Katelyn Nagy-Smith^{1,2}, Yuji Yamada¹, and Joel P. Schneider¹

¹Chemical Biology Laboratory, National Cancer Institute, Frederick National Laboratory for Cancer Research, Frederick, MD 21702, United States

²Department of Chemistry and Biochemistry, University of Delaware, Newark, DE 19716, United States

Supporting Information Table of Contents

Figure S1. Analytical HPLC and ESI-mass spectra of pure HLT2

- A. Analytical HPLC S2
- B. ESI-MS S2

Figure S2. Analytical HPLC and ESI-mass spectra of pure VEQ3

- A. Analytical HPLC S2
- B. ESI-MS S2

Figure S3. Dynamic frequency sweep and dynamic strain sweep of 0.5% peptide gels

- A. Dynamic frequency sweep S3
- B. Dynamic strain sweep S3

Figure S4. CD spectra of proteins

- A. α -lactalbumin S4
- B. Myoglobin S4
- C. Lactoferrin S4

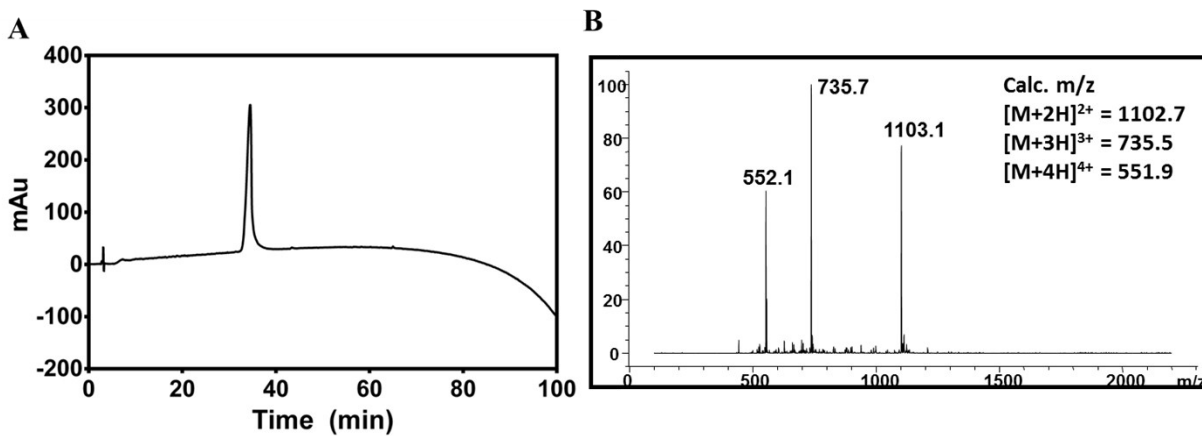


Figure S1. Analytical HPLC (A) and ESI-MS (B) of HLT2.

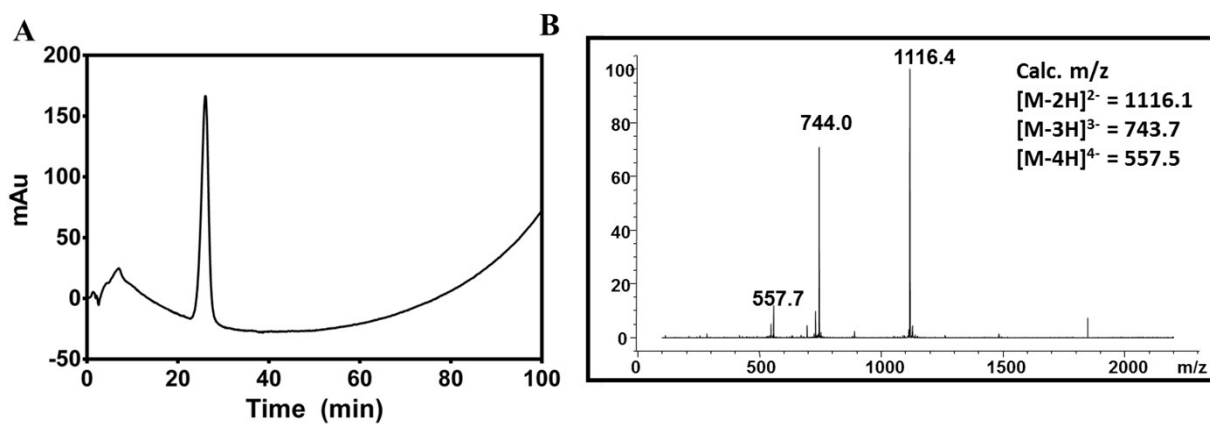


Figure S2. Analytical HPLC (A) and ESI-MS (B) of VEQ3.

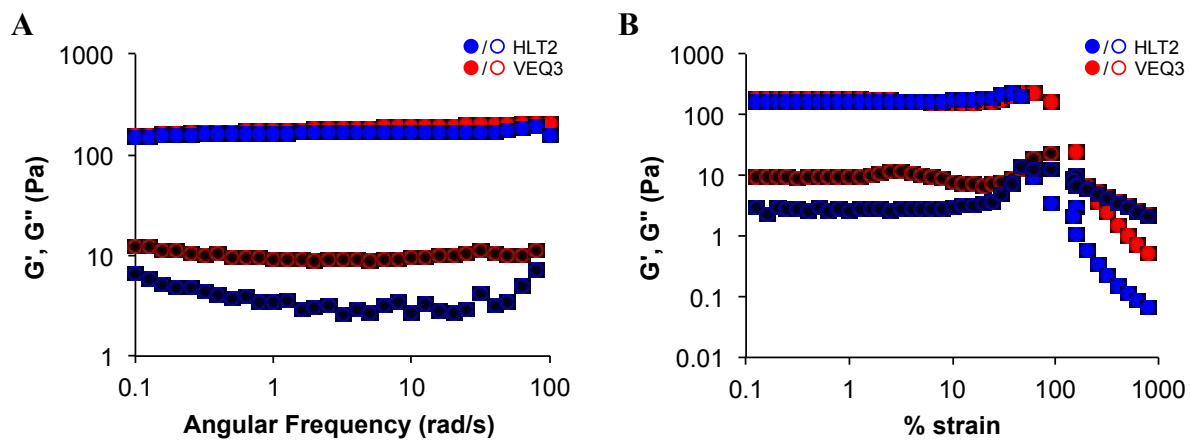


Figure S3. Dynamic frequency sweep (A) and dynamic strain sweep (B) of 0.5% peptide gels.

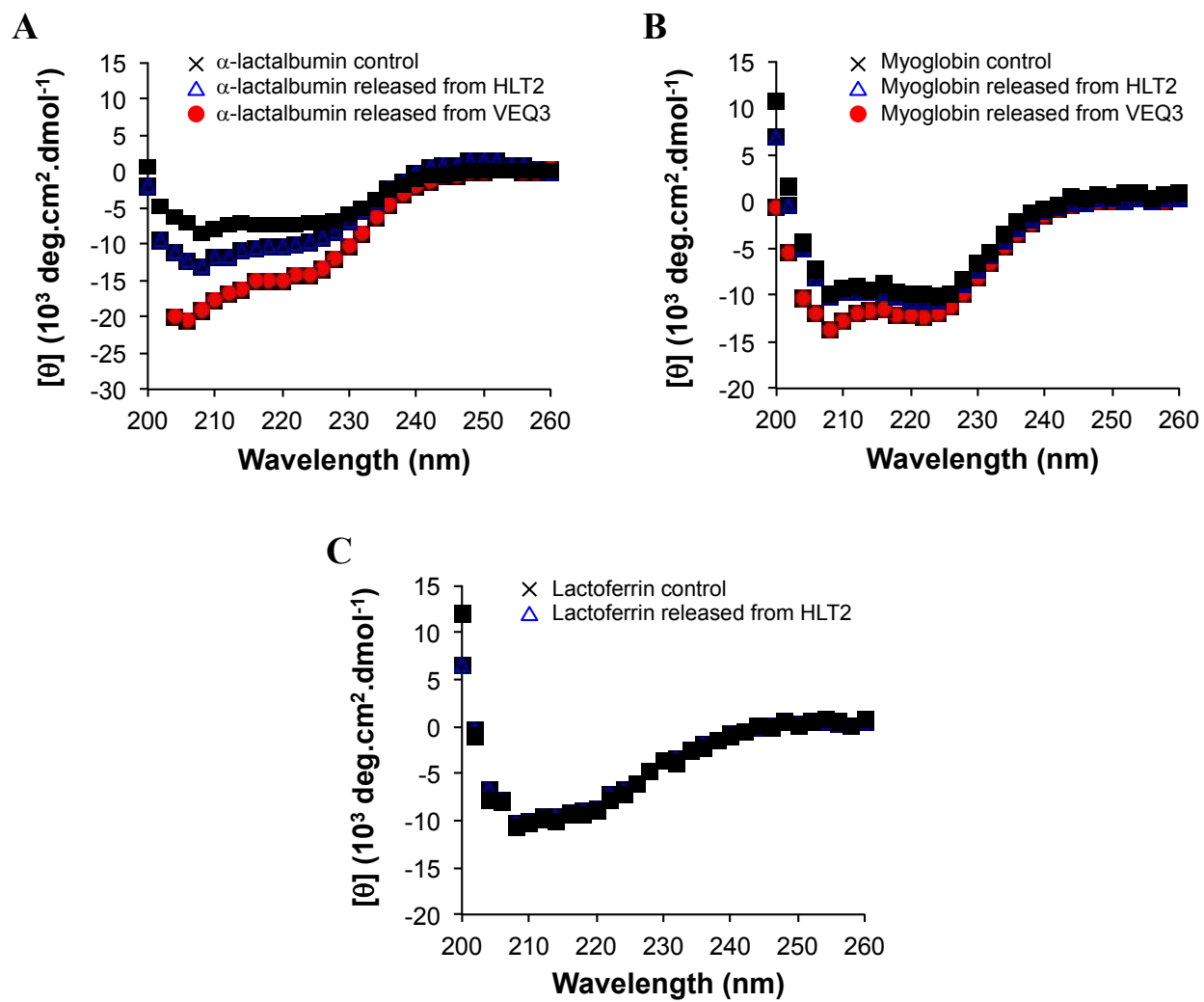


Figure S4. CD spectra of α -lactalbumin (A), myoglobin (B), and lactoferrin (C).