

Electronic Supplementary Information (ESI)

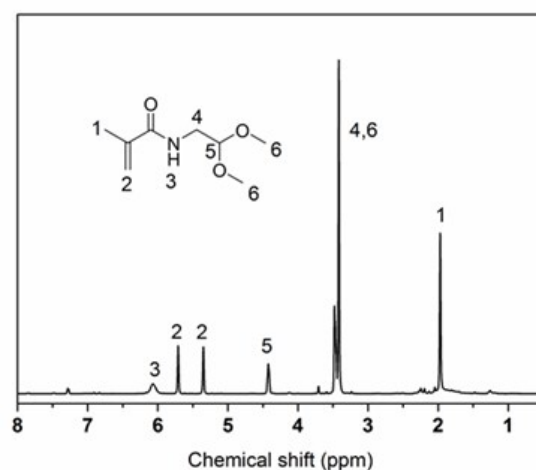


Figure S1. ^1H NMR spectrum of DMEA in CDCl_3 .

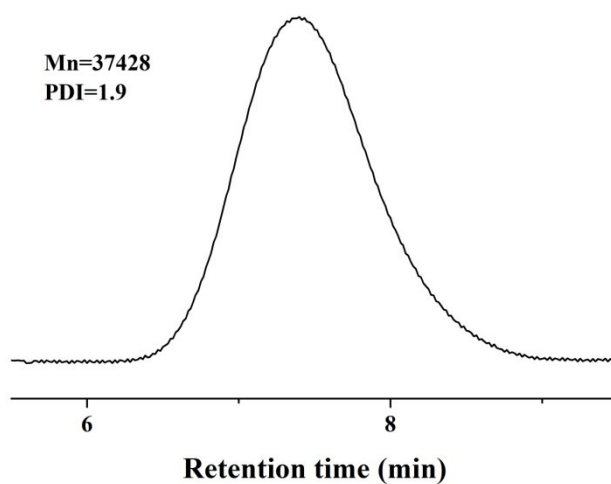


Figure S2. APDMEA spectrum of GPC

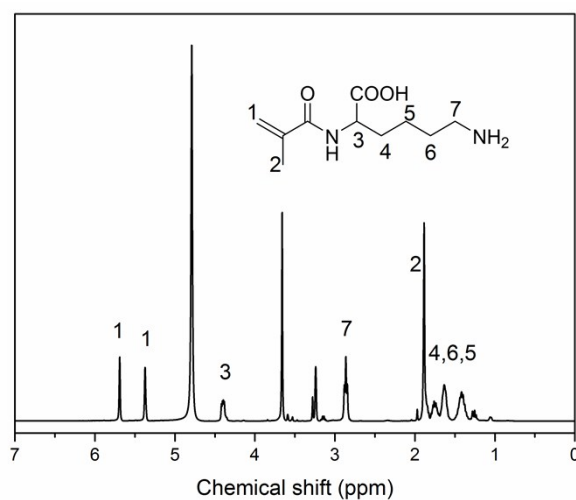


Figure S3. ^1H NMR spectrum of MLys in D_2O .

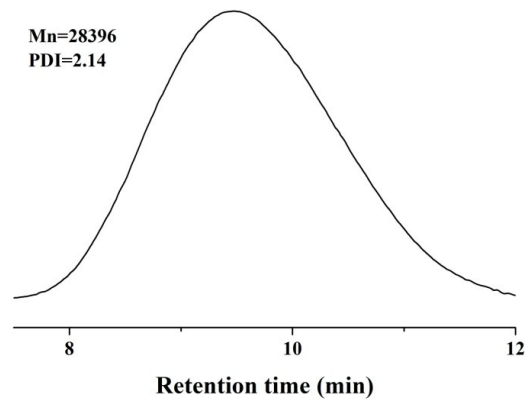


Figure S4. APMlys spectrum of GPC.

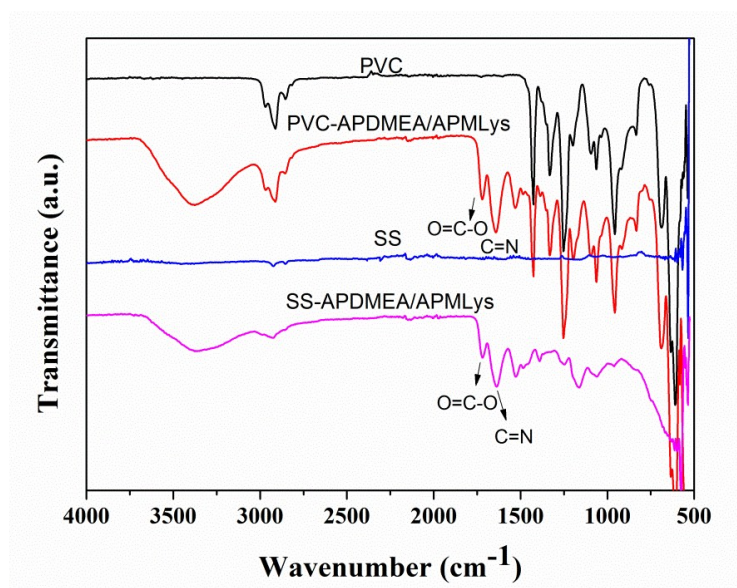


Figure S5. ATR-FTIR spectra of PVC, PVC-APDMEA/APMlys, SS and SS-APDMEA/APMlys.

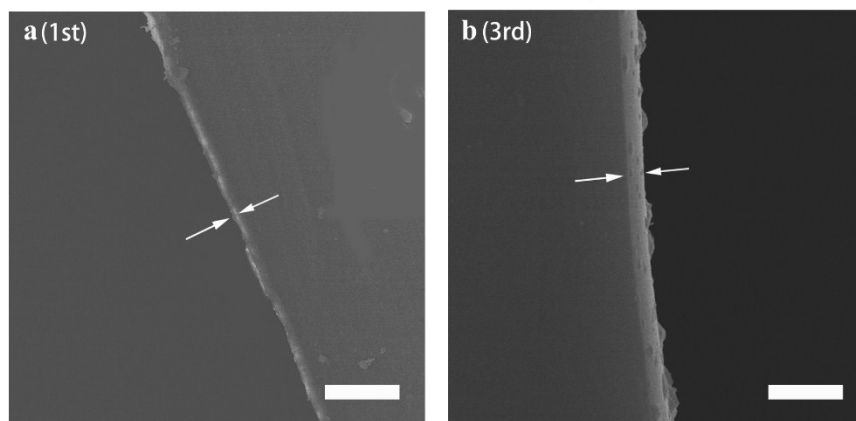


Figure S6. SEM images of modified PDMS for (a) one cycle and (b) three cycles. The scale bar represents $2.0 \mu\text{m}$.

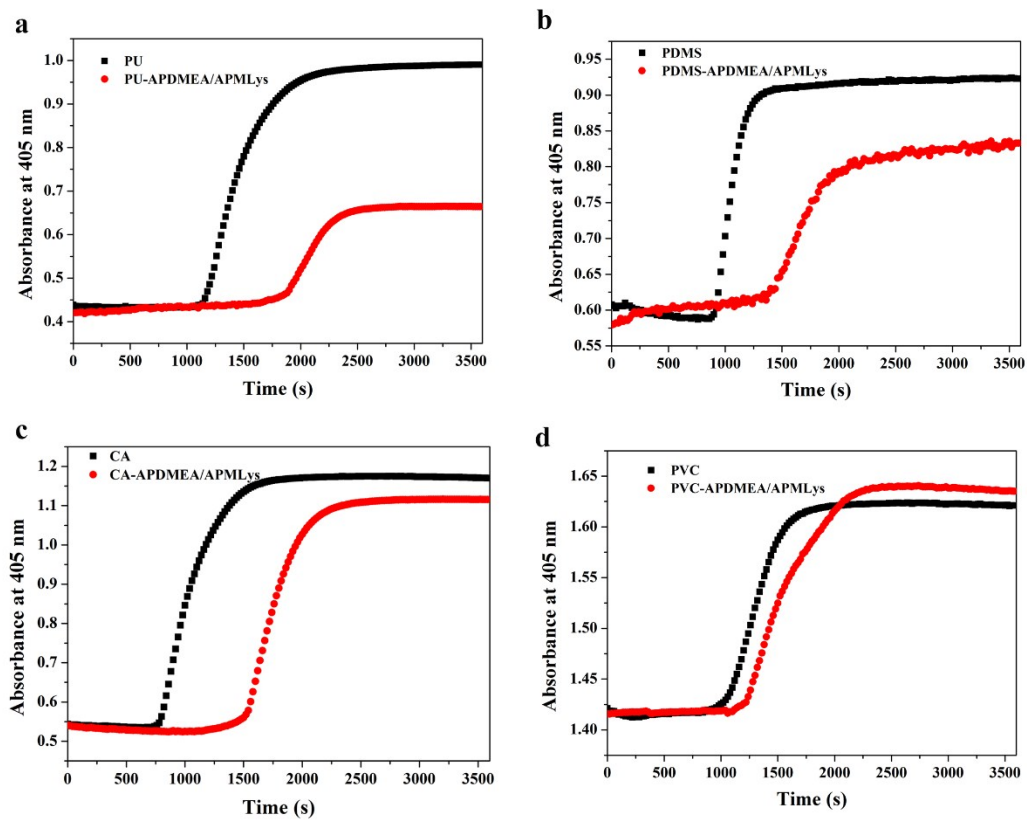


Figure S7. Re-calcification time of different substrates.

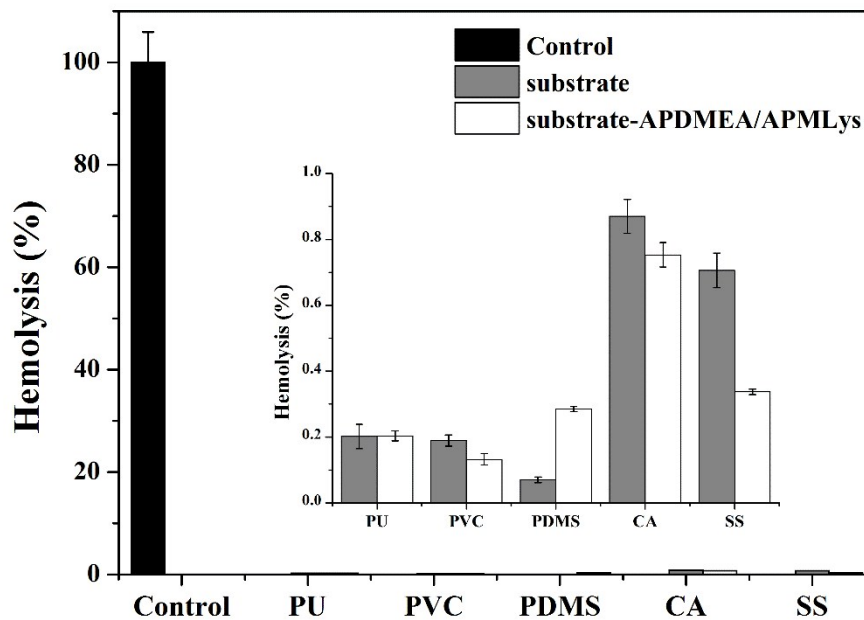


Figure S8. Hemolysis degree of different substrates. The data are presented as the means \pm SD, n = 6.

Table S1. Surface analysis results of CA, PU, PDMS, SS and PU samples

sample	XPS atomic concentration (%)					
	[C]	[N]	[O]	[Si]	[Cl]	[Fe]
CA	56.57		43.43			
CA-APDMEA/APMLys	68.34	9.66	22			
PU	71.96	3.12	24.92			
PU-APDMEA/APMLys	69.23	7.32	23.45			
PDMS	45.38		28.24	25.93		
PDMS-APDMEA/APMLys	51.48	2.60	23.94	21.98		
PDMS-APDMEA/ APMLys (PBS)	54.77	3.13	25.43	16.67		
PDMS-APDMEA/ APMLys (Plasma)	52.55	2.31	24.50	20.64		
SS	60.41	2.34	35.33			1.91
SS-APDMEA/APMLys	69.08	10.07	20.85			
SS-APDMEA/APMLys (PBS)	68.48	9.47	22.05			
SS-APDMEA/APMLys (Plasma)	68.18	9.65	22.17			
PVC	67.37		12.47		20.16	
PVC-APDMEA/ APMLys	67.81	3.59	10.99		17.61	