

Supporting Information for

**Synthesis and Characterization of a Special-Structure Poly-Schiff Base
Containing Thiophene Units as Thermoelectric Materials**

Junjie Li, Chunhua Lai, Xiongzhi Xiang, Lei Wang*

*Shenzhen Key Laboratory of Special Functional Materials, College of Materials Science and
Engineering, Shenzhen University, Shenzhen 518060, China*

Corresponding author: Lei Wang, Email address: wl@szu.edu.cn

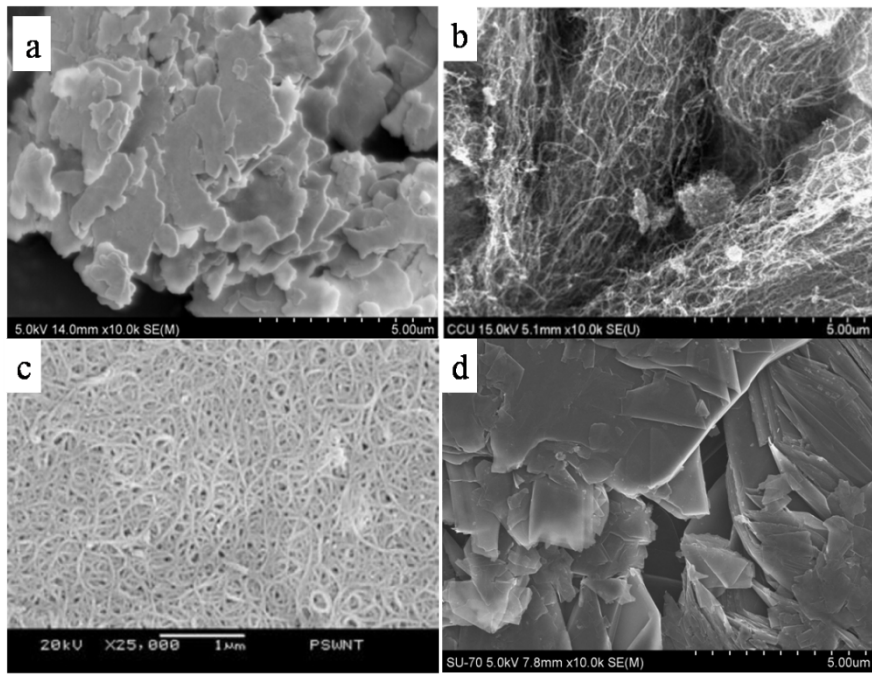


Fig.S1. SEM for inorganic fillers:(a)Ag, (b)MWNT, (c)SWNT, (d)G

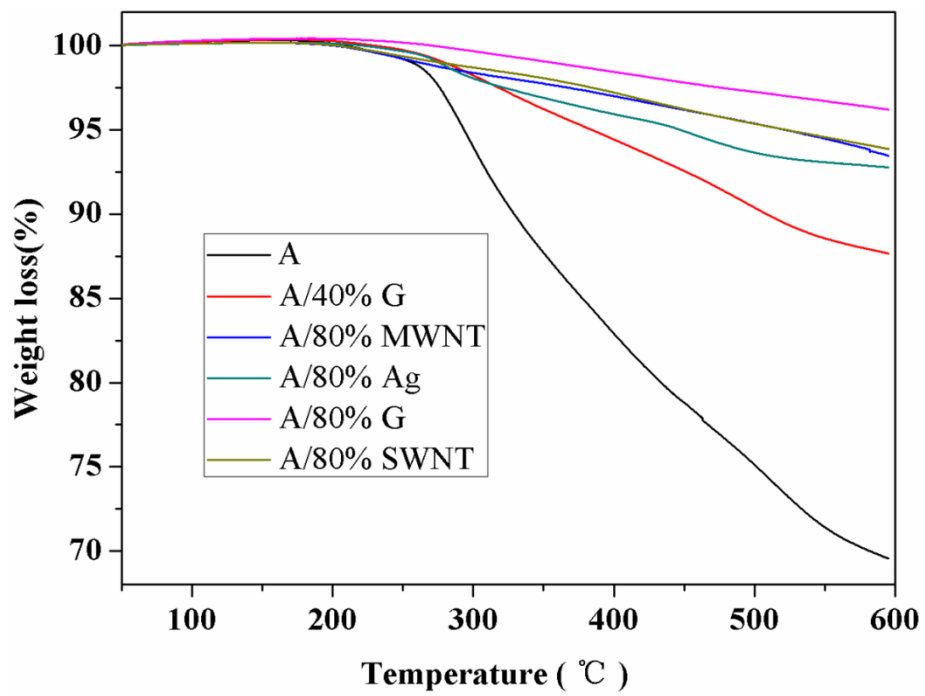


Fig. S2 TGA curves for PSB(A) and its composites

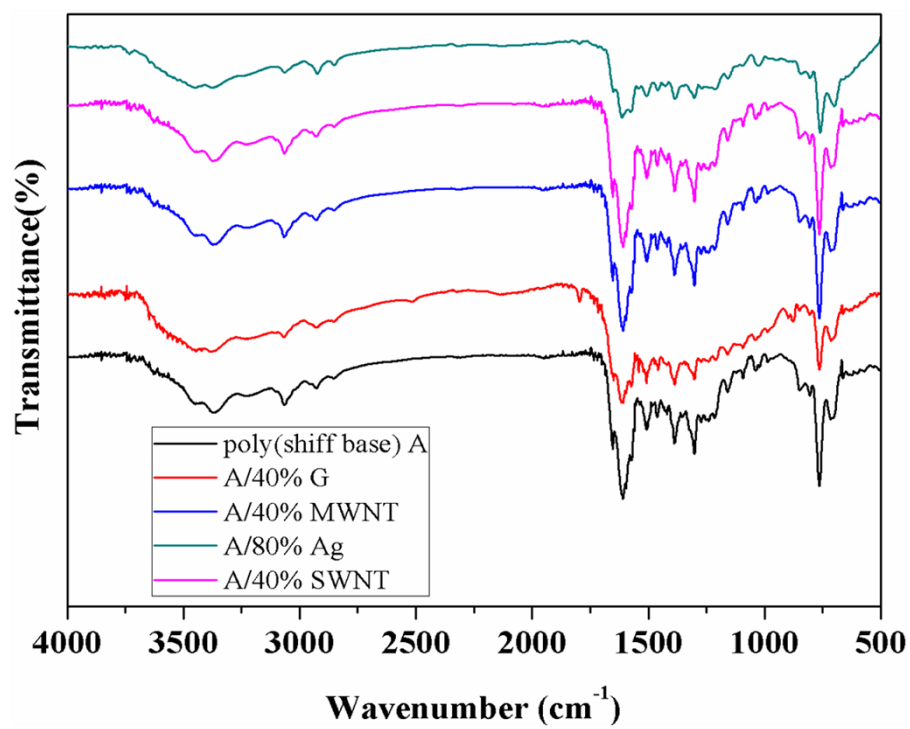


Fig.S3 The FT-IR spectra of PSB-A and its composites