

Supporting Information

Exceptional Enhancement of Raman Scattering on Silver Chlorobromide Nanocube Photonic Crystals: Chemical and Photonic Contributions

*Zheng Li, David J. Gosztola, Cheng-Jun Sun, Steve M. Heald, Yugang Sun**

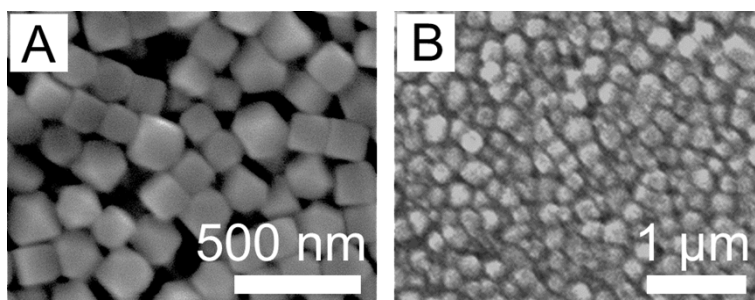


Figure S1. SEM images of (A) Ag nanocubes precipitated at the bottom of a centrifuge tube after centrifugation and (B) randomly organized AgCl_{0.44}Br_{0.56} nanocubes on a glass slide after a drop of dispersion was dried at room temperature.

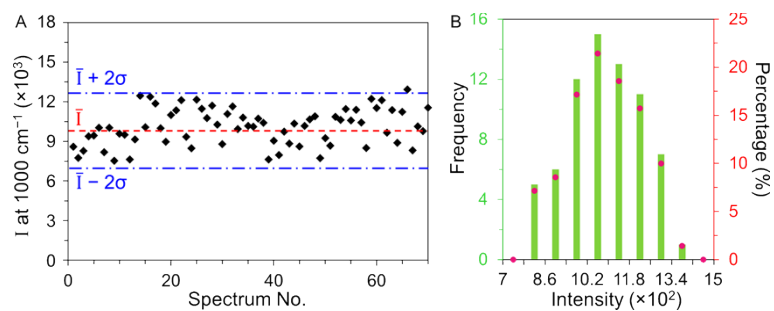


Figure S2. Statistical analysis of the Raman intensity at 999 cm⁻¹ measured from thiophenol molecules adsorbed on the AgCl_{0.44}Br_{0.56} nanocube photonic crystal at 70 random spots. The red dashed line in (A) highlights the average intensity (\bar{I}) and the blue dash dotted lines highlight the average plus/minus two times of the standard deviation ($\bar{I} \pm 2\sigma$).