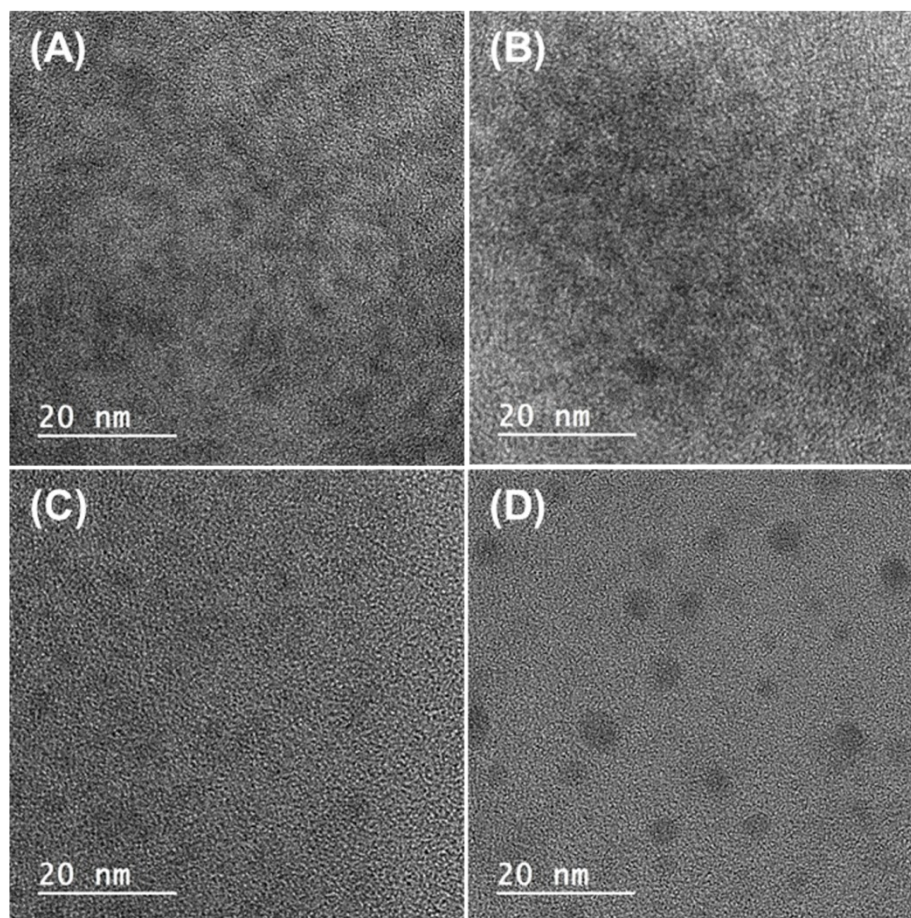


Electronic Supplementary Material (ESI) for

**Highly luminescent and stable white light-emitting diodes created by direct incorporation of Cd-free quantum dots in silicone resin using the thiol group**

Cheolsang Yoon, Taewoo Kim, Min-Ho Shin, Young-Geon Song, Kyusoon Shin, Young-Joo Kim\*, and Kangtaek Lee\*



**Figure S1.** TEM images of bare QDPH (A, B) and SH-QDPH (C, D) with QD concentration of 1 wt% (A, C) and 3wt% (B, D)