

Supporting Information

Novel Design of remote phosphor ceramic plate for white generation in high power LEDs

Author(s): Young Hyun Song,^{a,∇} Gill Sang Han,^{a,∇} Eun Kyung Ji,^c Min-Ji Lee,^a Ye Lim Song,^a Dal Sung Kong,^b Mong Kwon Jung,^c Byung Woo Jeong,^d Hyun Suk Jung^{a*} and Dae-Ho Yoon^{a,e*}

^a School of Advanced Materials Science & Engineering, Sungkyunkwan University, Suwon 440-746, Republic of Korea. Email: dhyoon@skku.edu, hsjung1@skku.edu

^b Department of Energy Science, Sungkyunkwan University, Suwon 440-746, Republic of Korea

^c Hyosung Corporation, R&D Business Labs, Anyang 431-080, Republic of Korea

^d LG Electronics, Future Device R&D Department, Seoul 137-724, Korea

^e SKKU Advanced Institute of Nanotechnology (SAINT), Sungkyunkwan University, Suwon 440-746, Republic of Korea

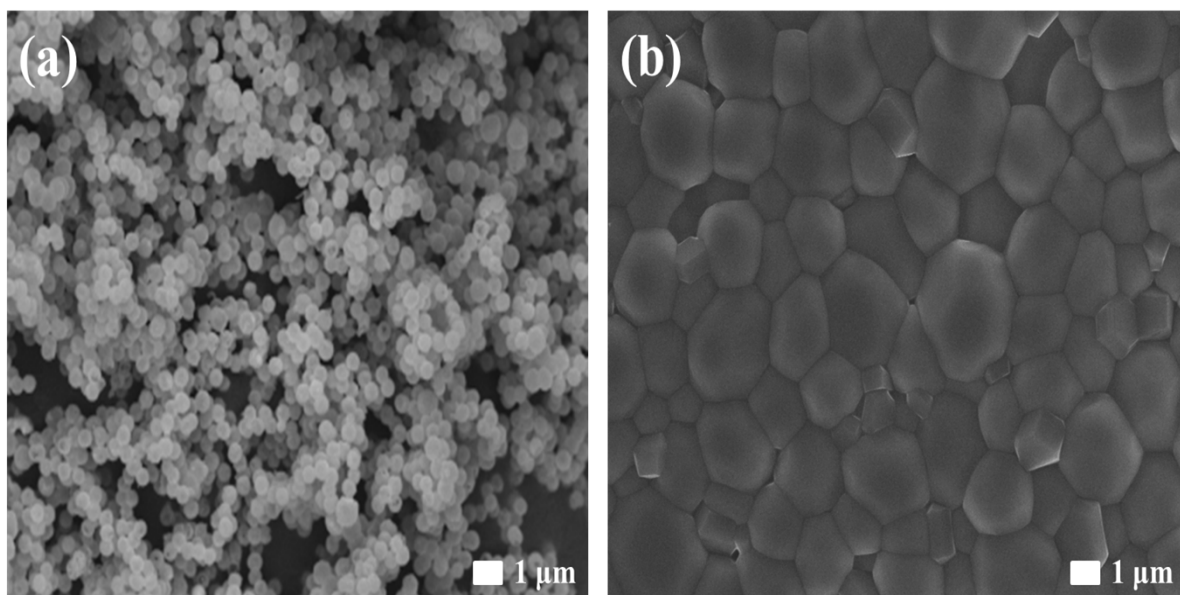


Fig. S1 The SEM image of (a) YAG: Ce NPs, (b) The fabricated PCP using YAG: Ce NPs

	Correlated Color Temperature (K)										
	0 °C	10 °C	20 °C	30 °C	40 °C	50 °C	60 °C	70 °C	80 °C	90 °C	100 °C
PCP	5531	5517	5508	5531	5526	5519	5512	5505	5500	5484	5463
PS	5552	5601	5564	5553	5565	5579	5621	5649	5682	5749	5778

Table S1. The comparison of CCT variation