

Supporting Information

The Crucial Role of Self-assembling in Nonlinear Optical Properties of Polymeric Composites Based on Crown-substituted Ruthenium Phthalocyaninate

Yulia G. Gorbunova^{a,b}, Antonina D. Grishina^a, Alexander G. Martynov^a, Tatiyana V. Krivenko^a, Alexandra A. Isakova^a, Vladimir V. Savel'ev^a, Sergey E. Nefedov^b, Eugeny V. Abkhalimov^a, Anatoly V. Vannikov^a, Aslan Yu. Tsivadze^{a,b}*

^a *Frumkin Institute of Physical Chemistry and Electrochemistry, Russian Academy of Sciences, Leninskiy Pr. 31, Moscow, 119071, Russia*

^b *Kurnakov Institute of General and Inorganic Chemistry, Russian Academy of Sciences, Leninskiy Pr. 31, Moscow, 119991, Russia*

e-mail: yulia@igic.ras.ru

	Page
Figure S1. A scheme of the Z-scan measurement technique: (1) pulse laser, (2) focusing lens, (3) sample moved along the beam direction from $-z$ to $+z$ range, (4) aperture with a 0.1 cm hole in the center, and (5) photodetector.	2
Figure S2. Molecular structure of complex (1), (30% probability ellipsoids). Hydrogen atoms are omitted for clarity.	3
Figure S3. Crystal packing of complex (1). Hydrogen atoms and solvate molecules are omitted for clarity.	4
Figure S4. HR ESI-MS spectrum of complex (1).	5

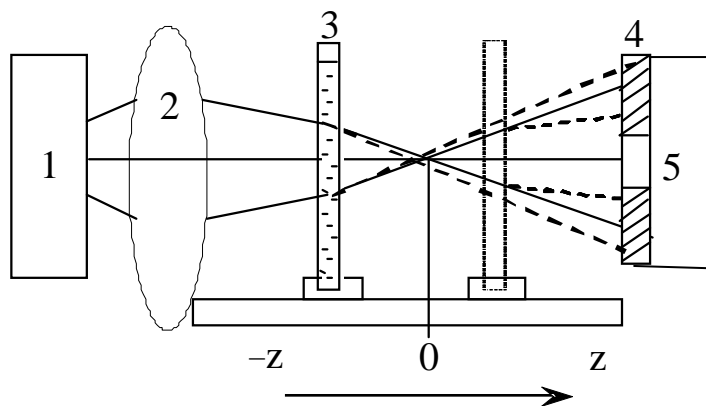


Figure S1. A scheme of the Z-scan measurement technique: (1) pulse laser, (2) focusing lens, (3) sample moved along the beam direction from $-z$ to $+z$ range, (4) aperture with a 0.1 cm hole in the center, and (5) photodetector.

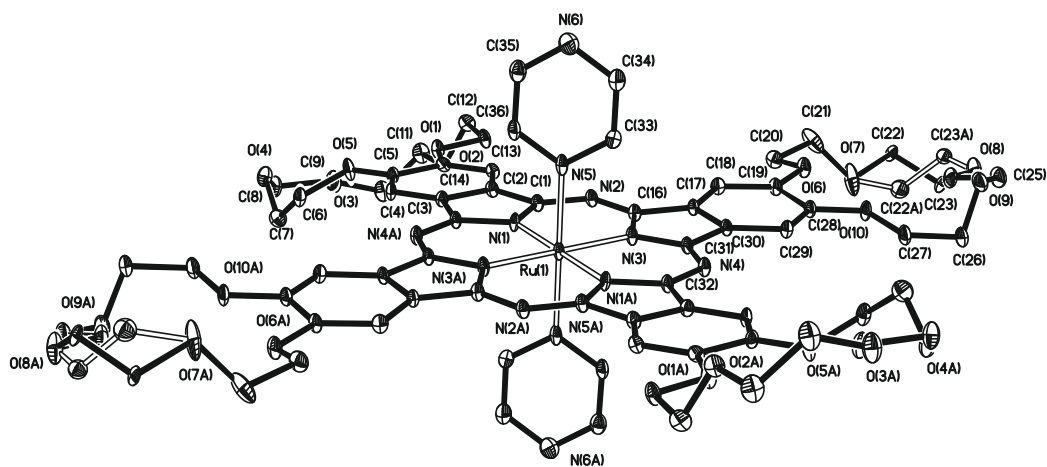
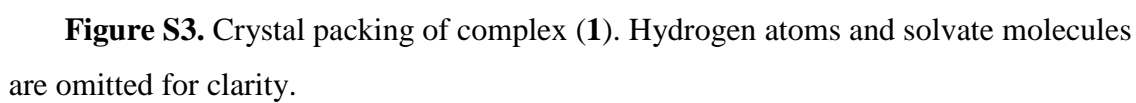


Figure S2. Molecular structure of complex (1), (30% probability ellipsoids). Hydrogen atoms are omitted for clarity.



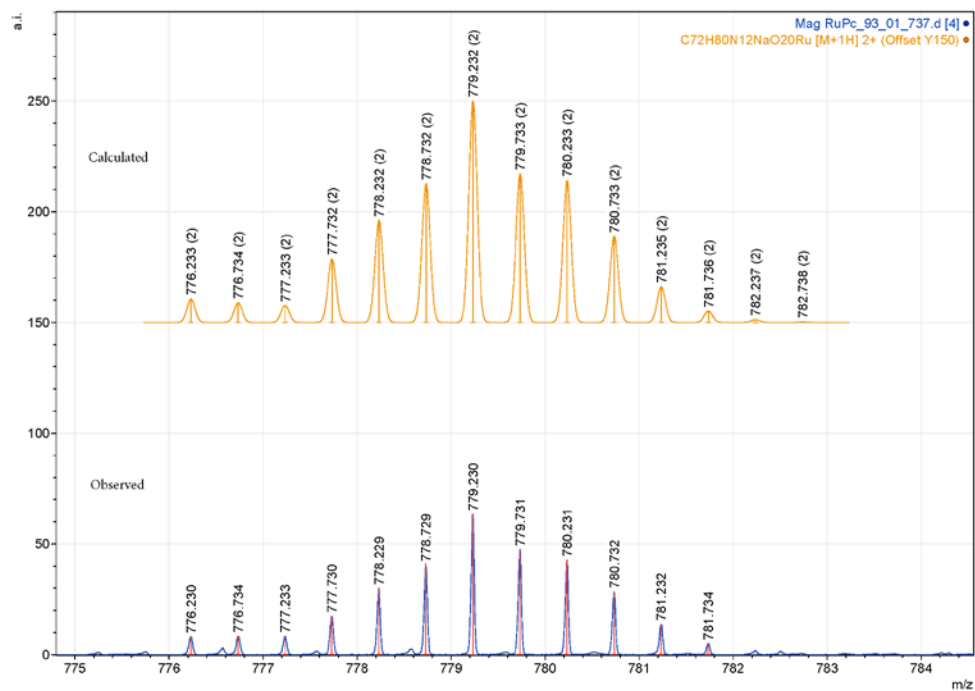


Figure S4. HR ESI-MS spectrum of complex (1).