

Supplementary Information

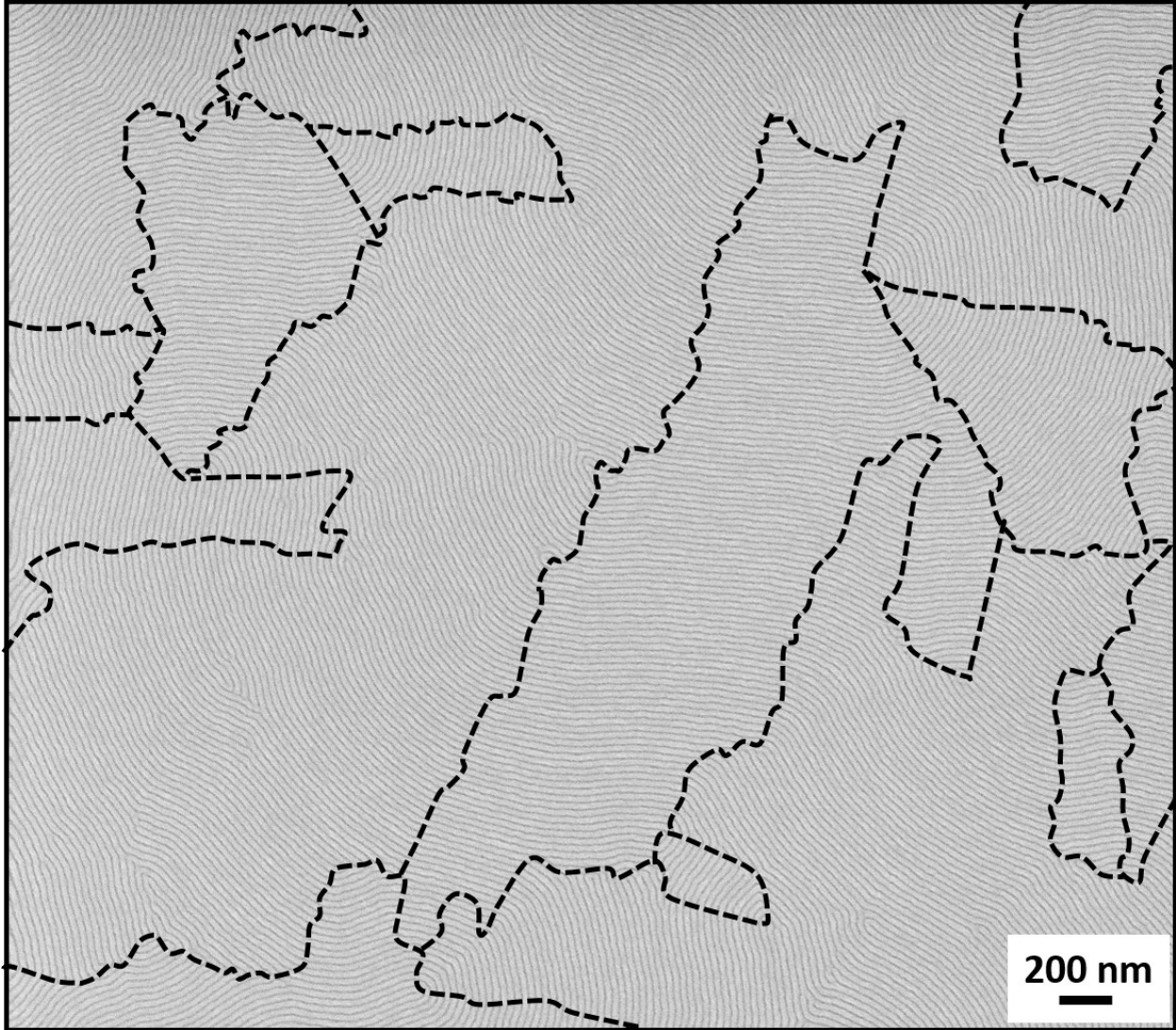
Scaling of correlation length in lamellae forming PS-*b*-PMMA thin films upon high temperature rapid thermal treatments.

Monica Ceresoli,^{a,b} Flavio Giovanni Volpe,^a Gabriele Seguni,^a Diego Antonioli,^c Valentina Gianotti,^c Katia Sparnacci,^c Michele Laus,^{,c} and Michele Perego^{*,a}*

a) Laboratorio MDM, IMM-CNR, Via C. Olivetti 2, 20864 Agrate Brianza (MB), Italy

b) Dipartimento di Fisica, Università degli Studi di Milano, Via Celoria 16, 20133 Milano, Italy

c) Dipartimento di Scienze e Innovazione Tecnologica (DISIT), Università del Piemonte Orientale “A. Avogadro”, INSTM, UdR Alessandria, Viale T. Michel 11, 15121 Alessandria, Italy



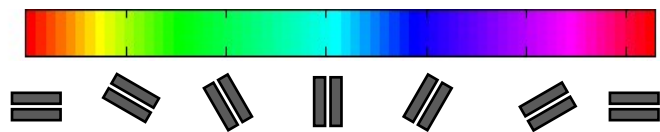
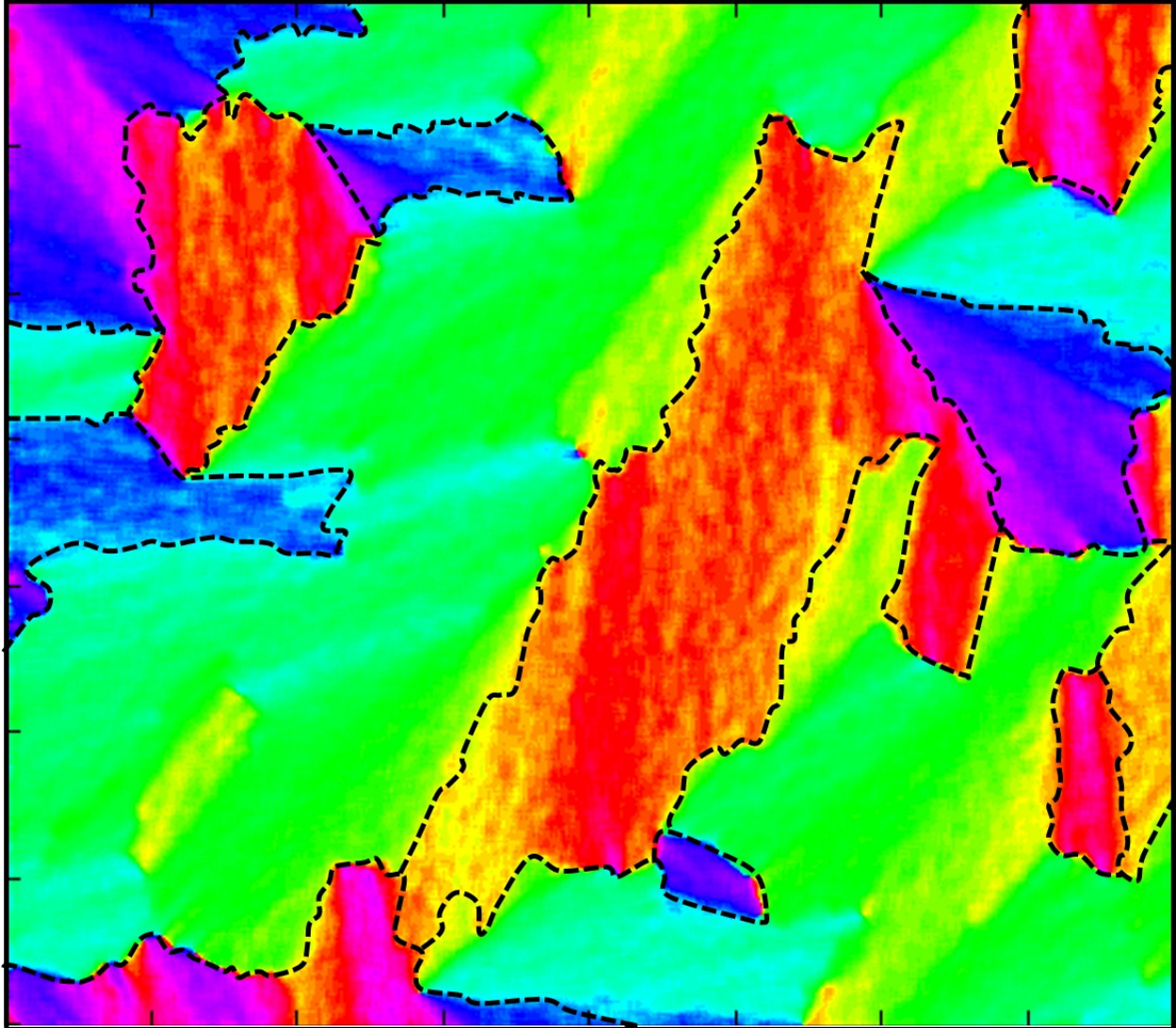


Figure S1 Comparison between the original SEM image (top) and the corresponding color map (bottom) for a sample treated at 330°C for 10 s. The two images have the same dimensional scale and the dashed lines highlight the boundaries of the main grains in the polymeric film. The color scale corresponding to different lamellar orientations is provided as well.