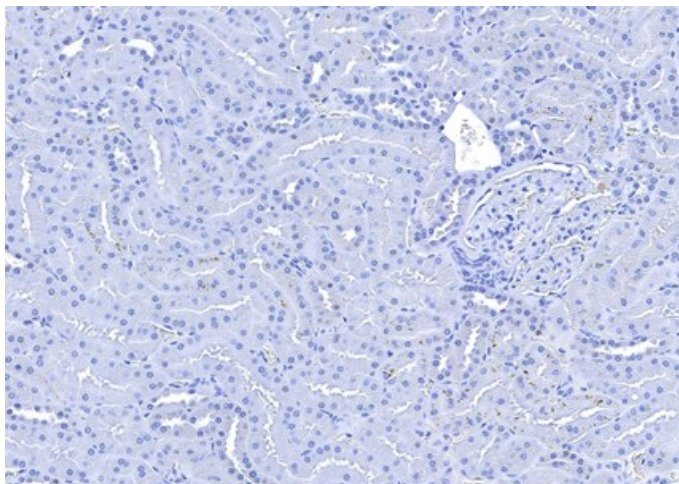
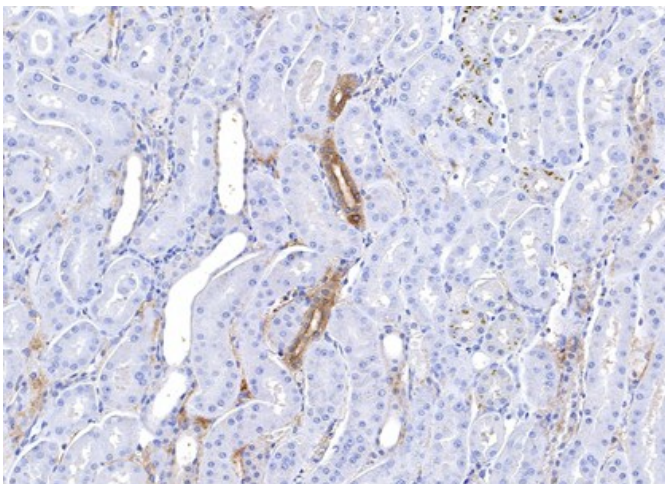


**Supplementary Figure 1.**

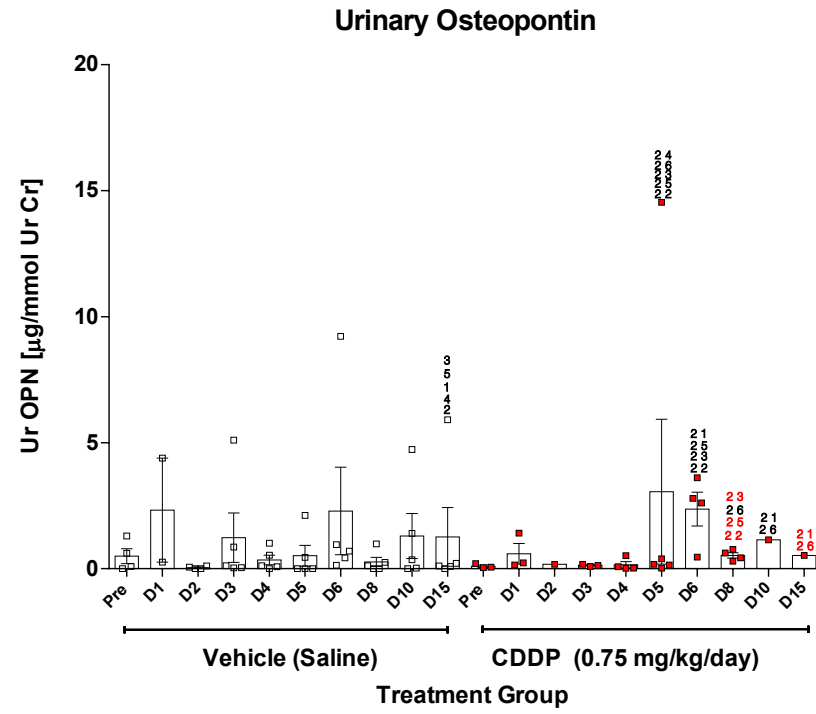
**A.**



**B.**

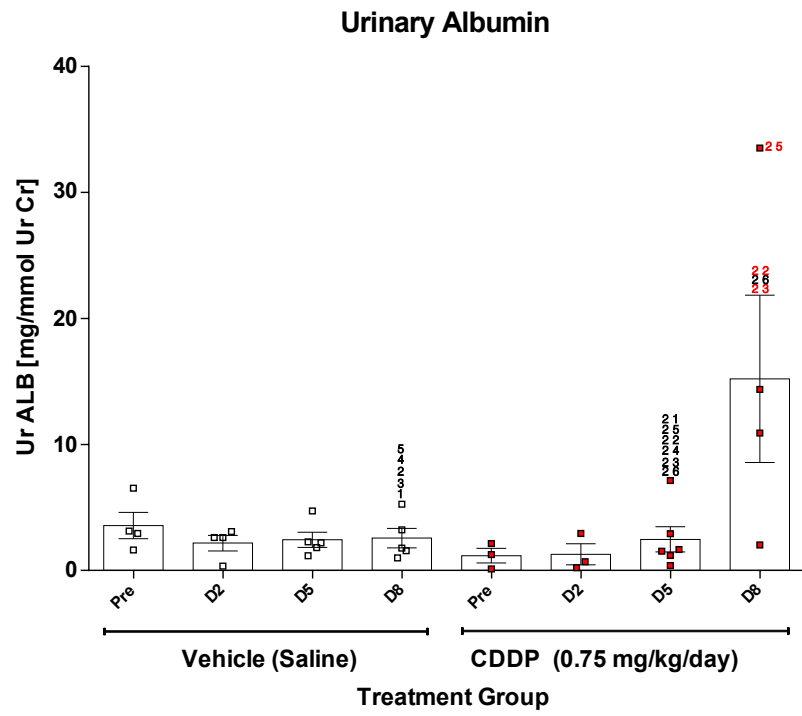


C.



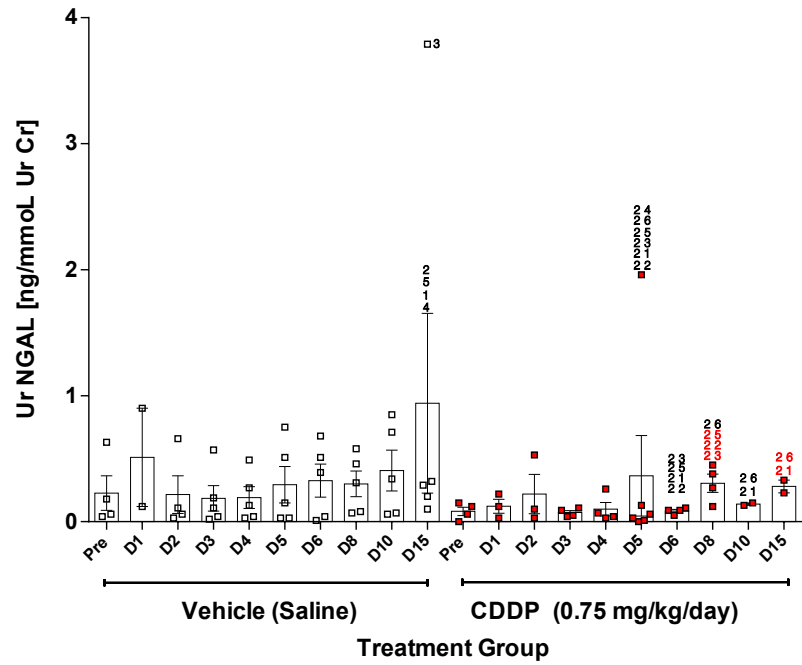
Supplementary Figure 2.

A.

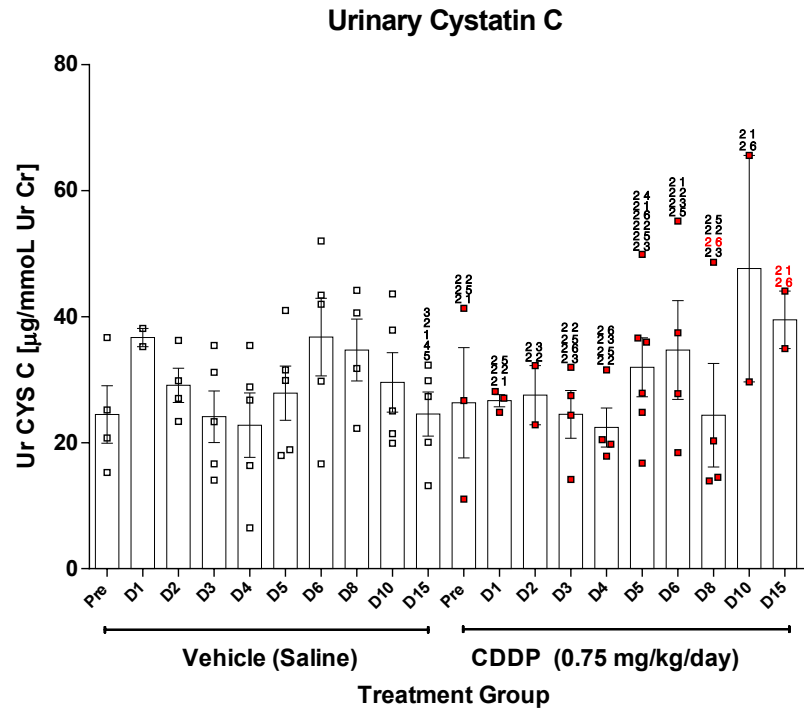


B.

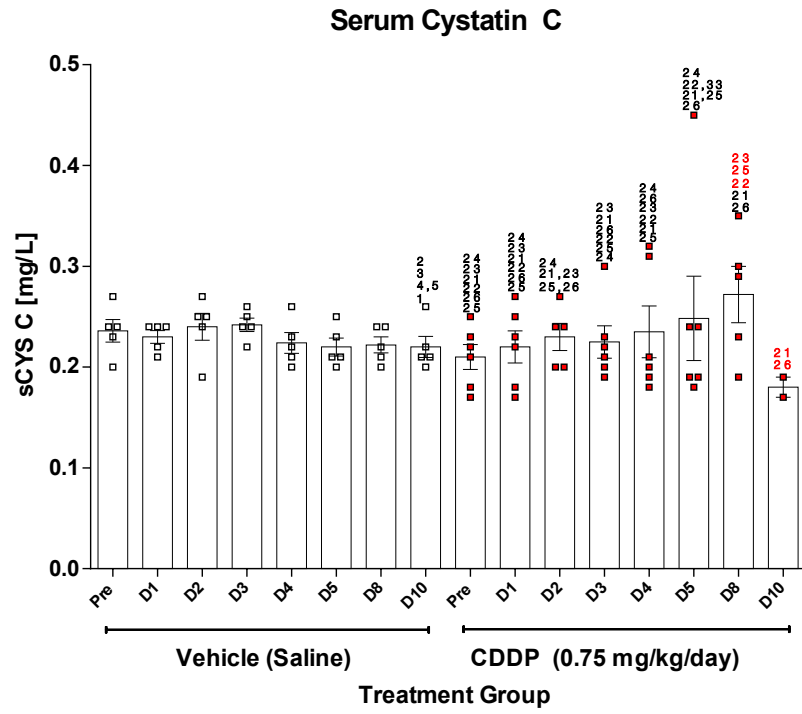
### Urinary Neutrophil Gelatinase-Associated Lipocalin



C.

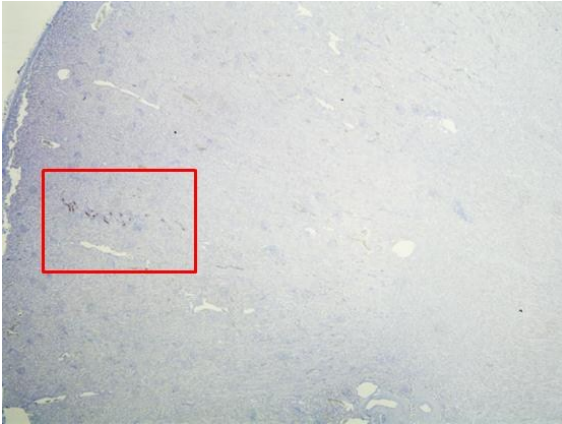


D.

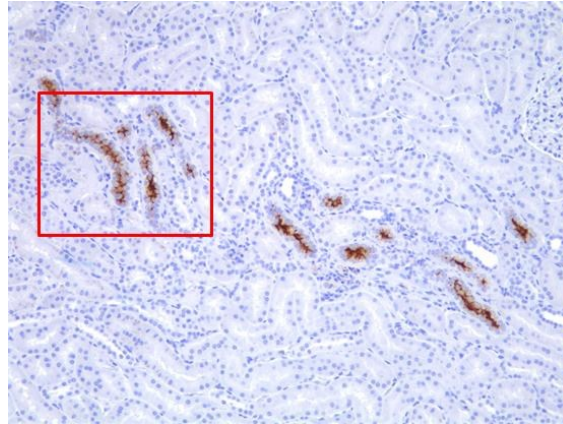


Supplementary Figure 3.

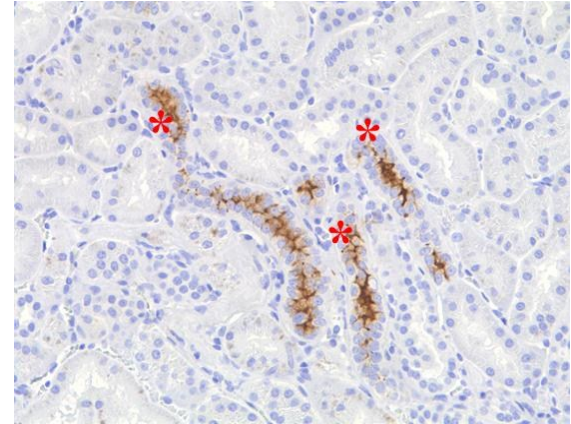
A.



B.



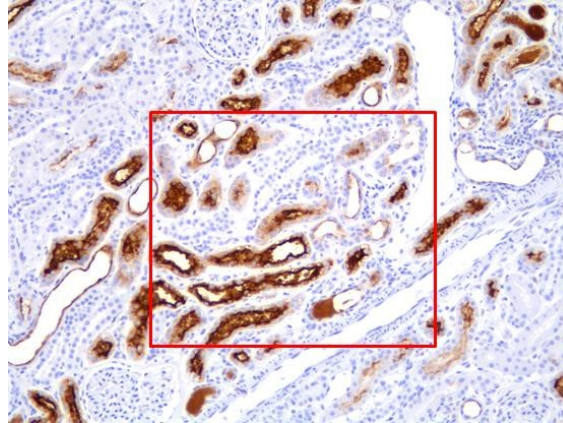
C.



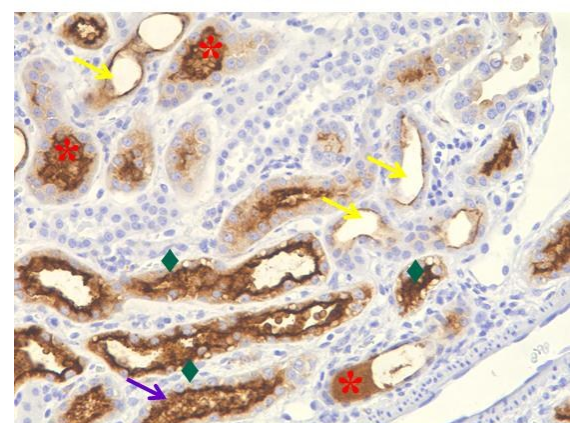
D.



E.

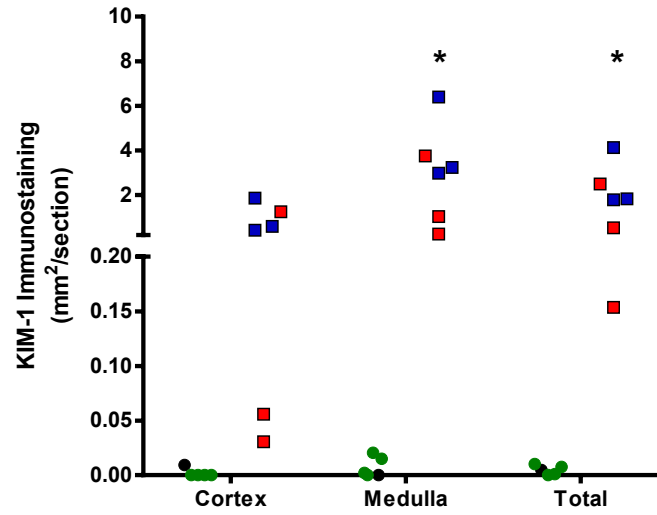


F.



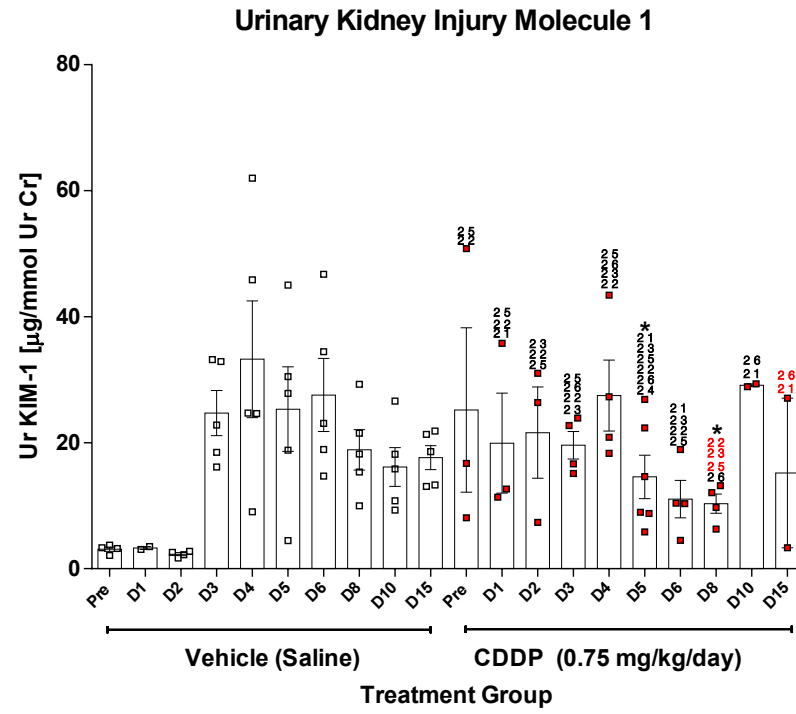
Supplementary Figure 3. (continued)

G.





H.





Supplementary Figure 5.

**Cisplatin Beagle Dogs Feasibility Study Design**

Group 1: Vehicle	0.9% Saline for Injection (USP)
Group 2: Cisplatin (CDDP)	0.75 mg/kg/dose
Route of administration	IV slow infusion (~20 minutes)
Dosing regimen	Once daily/ 5 consecutive days
Non-naïve animals (fasted)	Male Beagle dogs (5-6/group)
Blood/urine collection(s)	Predose, D1-D6, D8, D10 and 15
Toxicologic pathology endpoints	Serum CDDP, blood/urine biomarkers, kidney histopathology and kidney immunohistochemical staining