

Electronic Supplementary Information (ESI)

Elucidating the cellular uptake mechanism of aptamer-functionalized graphene-isolated-Au-nanocrystals with dual-modal imaging

Shanshan Wang^a, Zhangkun Liu^a, Yuxiu Zou^a, Xiaofang Lai^a, Ding Ding^a, Long Chen^c, Liqin Zhang^a, Yuan Wu^a, Zhuo Chen^{a*} & Weihong Tan^{a,b*}

Molecular Science and Biomedicine Laboratory, State Key Laboratory of Chemo/Bio-Sensing and Chemometrics, College of Chemistry and Chemical Engineering, College of Biology, Hunan University, Changsha, 410082, China

Center for Research at Bio/Nano Interface, Department of Chemistry and Department of Physiology and Functional Genomics, Shands Cancer Center, UF Genetics Institute and McKnight Brain Institute, University of Florida, Gainesville, Florida 32611-7200, United States

Faculty of Sciences and Technology, University of Macau, Av. Padre Tomas Pereira Taipa, Macau, China

*To whom correspondence should be addressed:

Phone:

Fax:

E-mail: zhuochen@hnu.edu.cn; tan@chem.ufl.edu

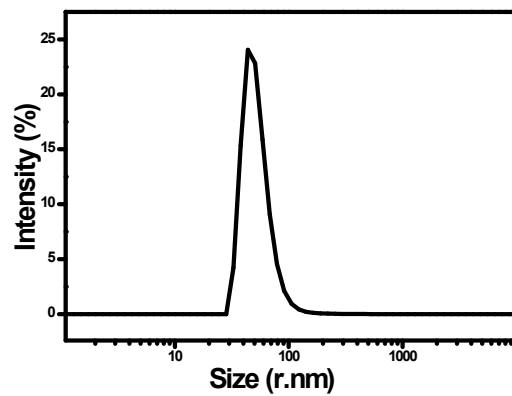


Figure S1. DLS characterization of the size distribution of the suspended GIANS.

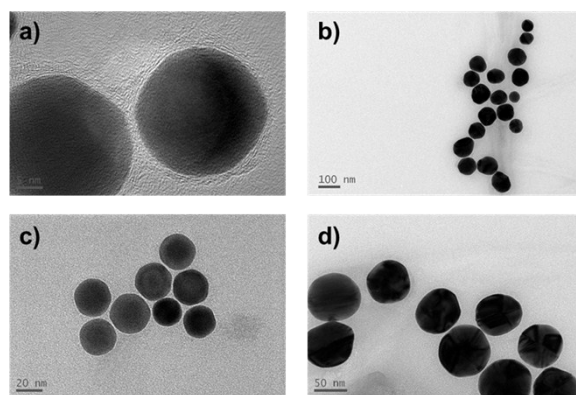


Figure S2. Transmission electron microscopy characterization of GIANS.

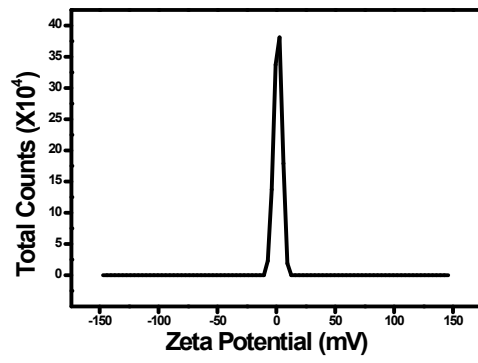


Figure S3. ζ -potential curves of the GIAN suspension measured at room temperature on the ZetaSizer Nano ZS90.

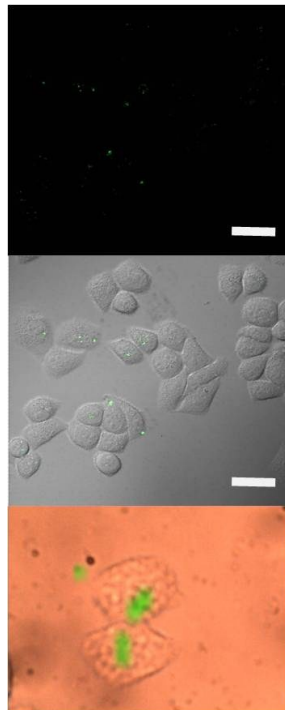


Figure S4. Cells were pretreated with cytochalasin D before incubation with GIANs.