

Detection of Potentially Toxic Metals by SERS using Salen Complexes

Julie Docherty, Samuel Mabbott, Ewen Smith, Karen Faulds, Christine Davidson, John Reglinski and Duncan Graham

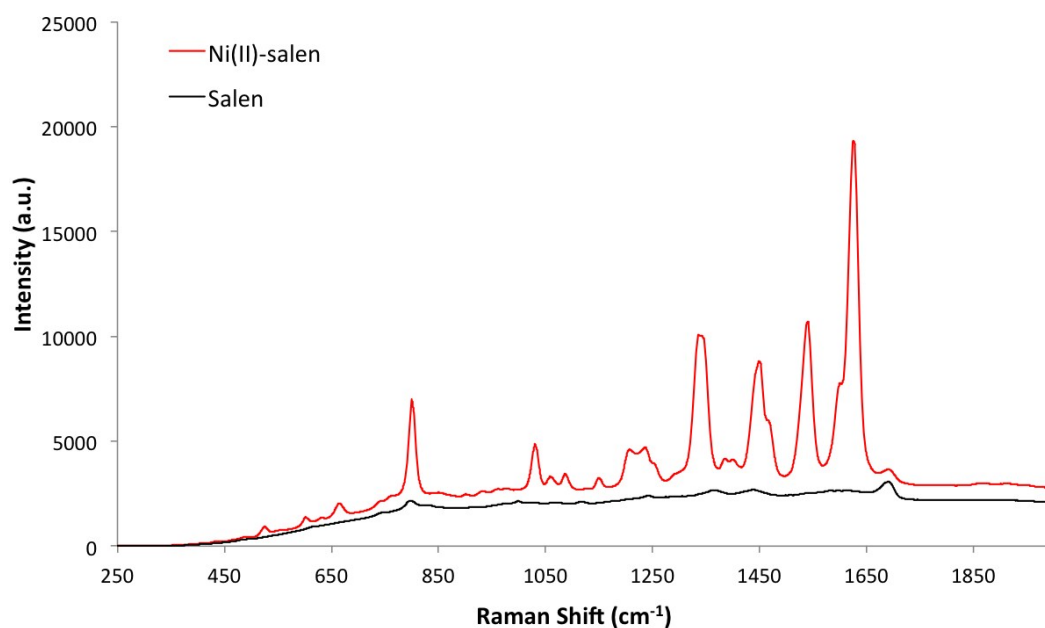


Figure S 1: Comparison of the SERS spectrum of the free salen ligand (black) to that of the Ni(II)-salen complex (red) ($\lambda_{\text{ex}} = 532 \text{ nm}$; acc. time = 10s)

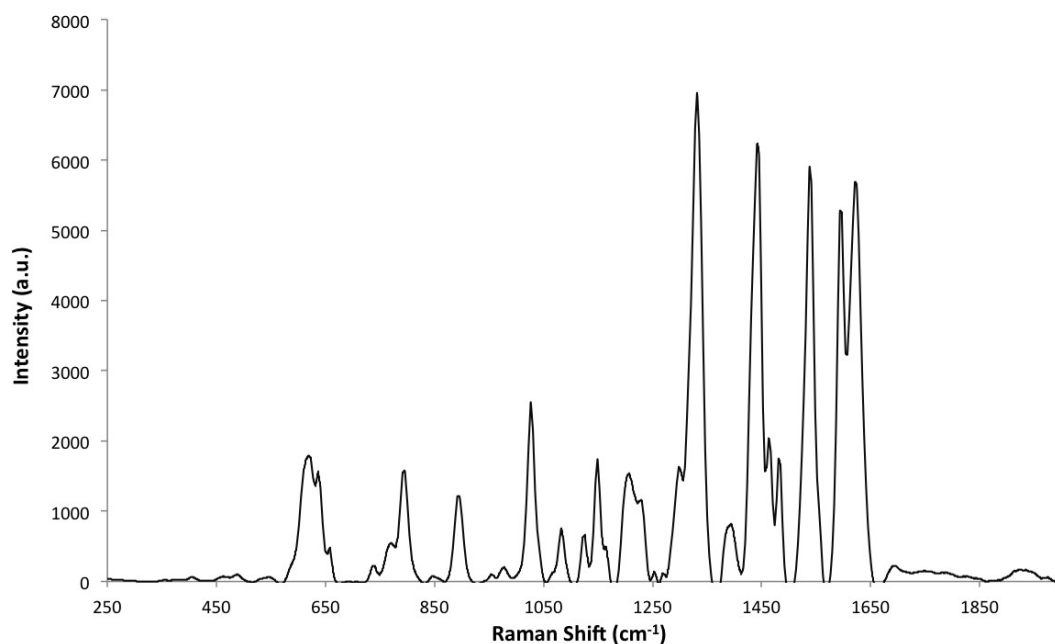


Figure S 2: SERS spectrum obtained from the contaminated freshwater ($\lambda_{\text{ex}} = 532 \text{ nm}$; acc. time = 10s)