

Electronic Supporting Information

Doubly Charged Trimeric Cluster Ion: Effective in Mutual Chiral Recognition of
Tadalafil and Three Proton Pump Inhibitors

Lu Wang^{a,b}, Yunfeng Chai^a, Wenquan Zhu^c, Yuanjiang Pan^d, Cuirong Sun^{a,*}, Su Zeng^{a, b,*}

^a*Institute of Drug Metabolism and Analysis, College of Pharmaceutical Sciences, Hangzhou 310058, Zhejiang, PR China*

^b*Zhejiang Province Key Laboratory of Anti-Cancer Drug Research, Zhejiang University, Hangzhou 310058, Zhejiang, PR China*

^c*Department of Quality Control, Zhejiang Huahai Pharmaceutical Ltd, Taizhou, China*

^d*Department of Chemistry, Zhejiang University, Hangzhou 310027, Zhejiang, PR China*

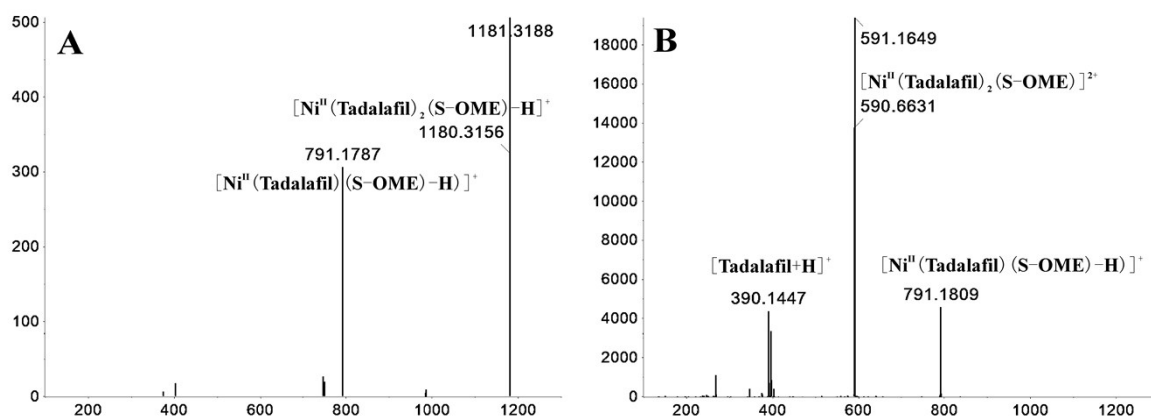


Fig. S1 ESI-MS with selected ion scan mode (A); ESI-MS with full scan mode (B).

Table S1 R_{chiral} of R,R/S,S-tadalafil with different central metal ions

Reference	R_{chiral} R,R/S,S-tadalafil					
	Ni ²⁺	Cu ²⁺	Mg ²⁺	Co ²⁺	Mn ²⁺	Zn ²⁺
S-OME	1.67	ND	1.15	1.36	1.15	1.28
S-PAN	1.82	ND	1.11	1.45	1.1	ND
S-LAN	1.06	ND	1.00	1.03	1.03	1.01

ND: Not Detectable.