

Supplemental Information:

Sensitive and specific detection of a new β -agonist brombuterol in tissue and feed samples by a competitive polyclonal antibody based ELISA

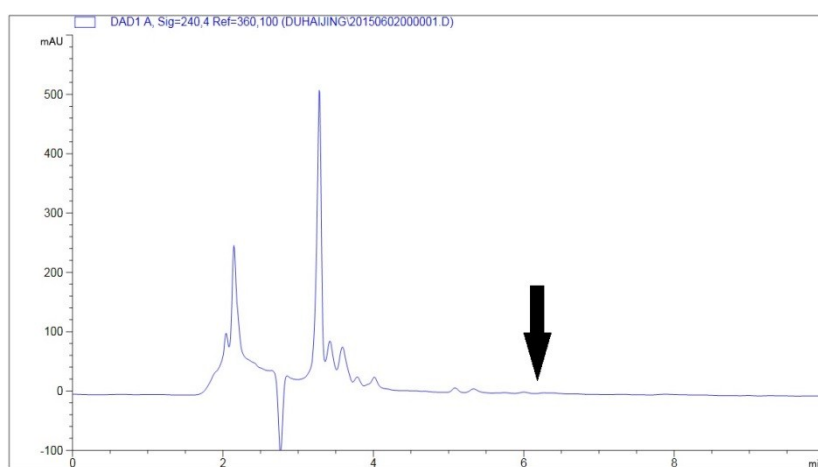
Haijing Du^a, Yanxin Chu^a, Hong Yang^{b*}, Kang Zhao^a, Jianguo Li^{a*}, Pei She^a,
Xiang Zhang^a, Anping Deng^{a*}

^aThe Key Lab of Health Chemistry & Molecular Diagnosis of Suzhou, College of
Chemistry, Chemical Engineering & Materials Science, Soochow University,
Renai Road 199, Suzhou 215123, China

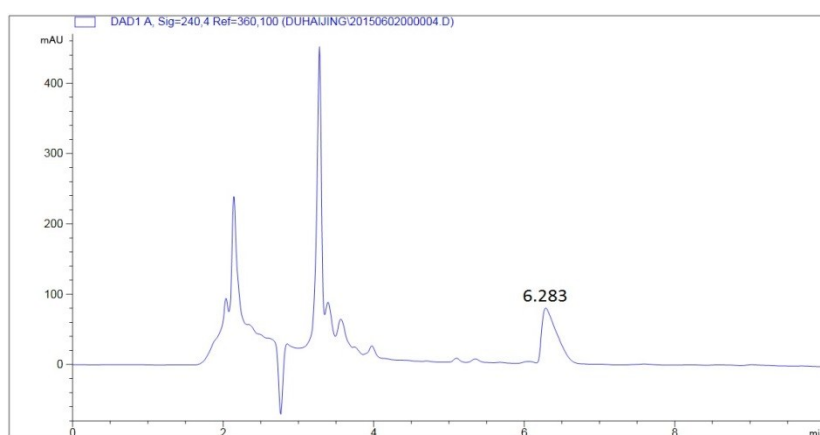
^bCollege of Pharmacy Sciences, Soochow University, Suzhou, 215123, Chin

* Corresponding author: Tel: +86 512 65884630; Fax: +86 512 65884630

e-mail: yanghong@suda.edu.cn; lijgsd@suda.edu.cn; denganping@suda.edu.cn



(a)



(b)

Fig. S1 The chromatograms of the HPLC for brombuterol detection from spiked feed samples. (a) unspiked samples (the arrow indicates the point brombuterol peak appeared); (b) sample spiked with brombuterol at $10 \text{ ng} \cdot \text{g}^{-1}$ level.