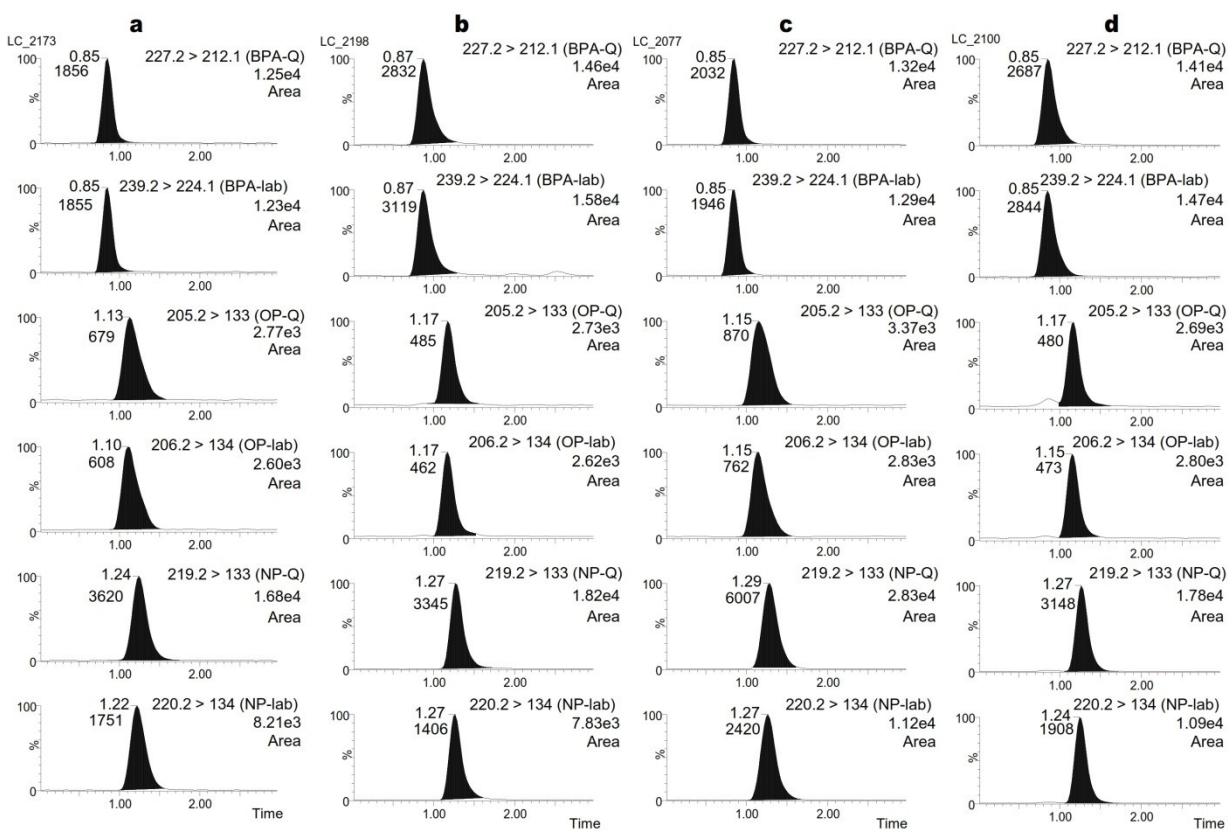


## Method development and validation for the determination of selected endocrine disrupting compounds by liquid chromatography mass spectrometry and isotope pattern deconvolution in water samples. Comparison of solid phase extraction and hollow fiber liquid phase microextraction as extraction techniques

Neus Fabregat-Cabello, Jorge Pitarch-Motellón, Juan V. Sancho, María Ibáñez, Antoni Francesc Roig-Navarro\*.

Research Institute for Pesticides and Water, Universitat Jaume I, E-12071, Castellón, Spain.

### Electronic Supplementary Information



**Fig A.1.** SRM chromatograms in negative electrospray ionization for bisphenol A (BPA), octylphenol (OP) and nonylphenol (NP) in effluent wastewater by (a) HF-LPME and (b) SPE as well as in surface water by (c) HF-LPME and (d) SPE at the lowest validated level

