

Electronic Supplementary Information (ESI)

**Capsaicin determination and chili sauce
discrimination using low-cost and portable
electrochemical sensors based on all graphite
pencil electrodes**

Shixin Wu, Jiamin Zeng, Hong Xie and Sum Huan Ng*

* Singapore Institute of Manufacturing Technology, 73 Nanyang Drive, Singapore 637622. E-mail: shng@simtech.a-star.edu.sg; Tel: +65 67938382 (Dr. Sum Huan Ng).

Fig. S1 Layout of the home-made electrochemical cell (left image) and pictures of the fabricated cell (middle and right images).

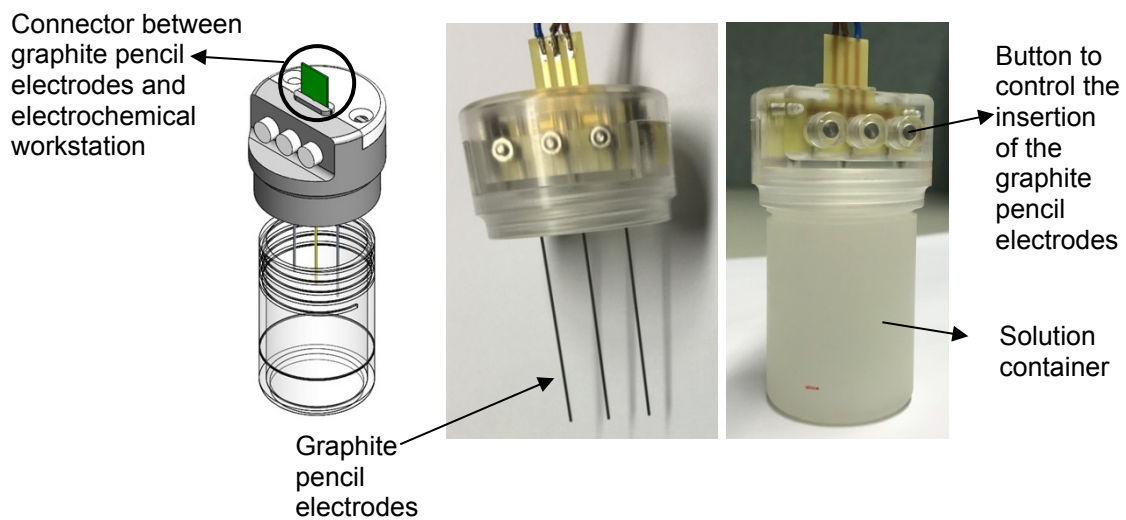


Fig. S2 SEM images of (A) Pilot, (B) uni, (C) Pentel, (D) Ain and (E) OMNI PGEs taken at their bottom (base) surfaces.

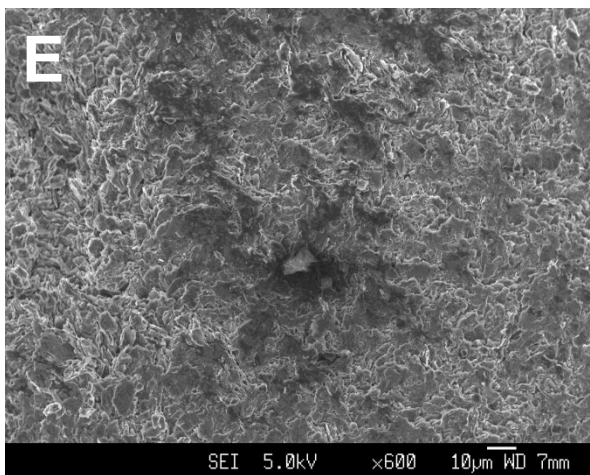
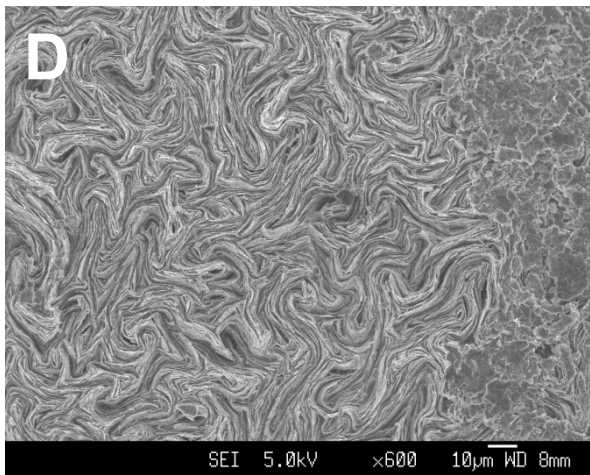
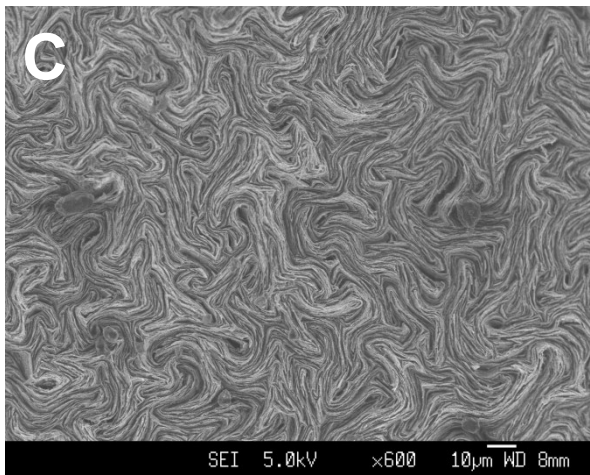
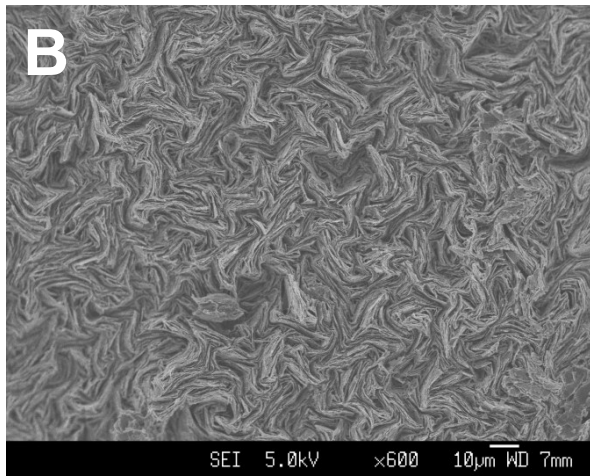
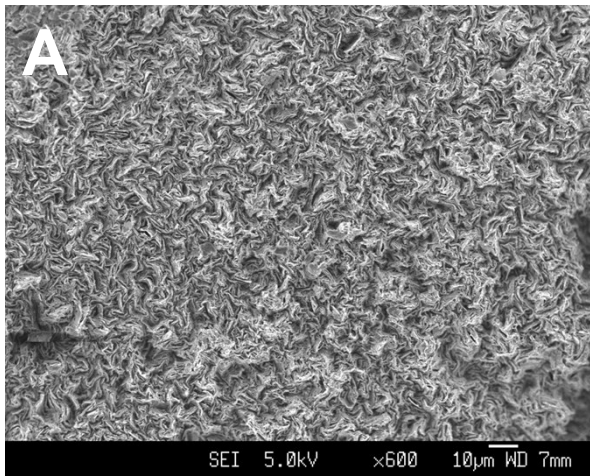


Fig. S3 *k*-means clustering plot of different brands of chilli sauces based on PCA of I_{ap} .

