

A Method Employing SPE, MRM LC-MS/MS and a THF-Water solvent system for the Simultaneous Determination of Five Antiretroviral Drugs in Human Blood Plasma

Elliott Mwando Jr,^a Amos Masele,^b Enoch Sepako^b and Kwenga Sichilongo^{*a}

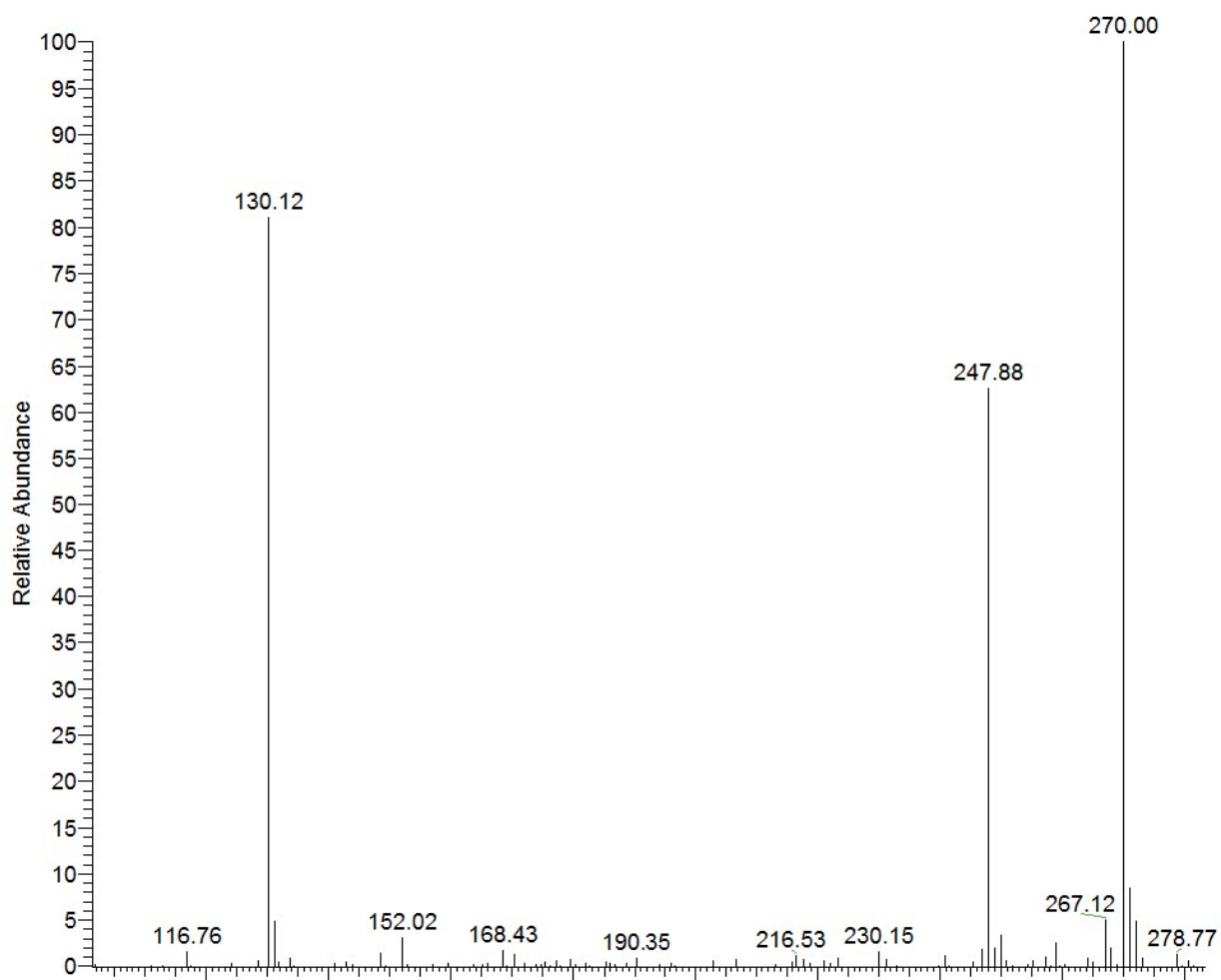


Fig. S1. ESI mass spectrum of emtricitabine (EMT)

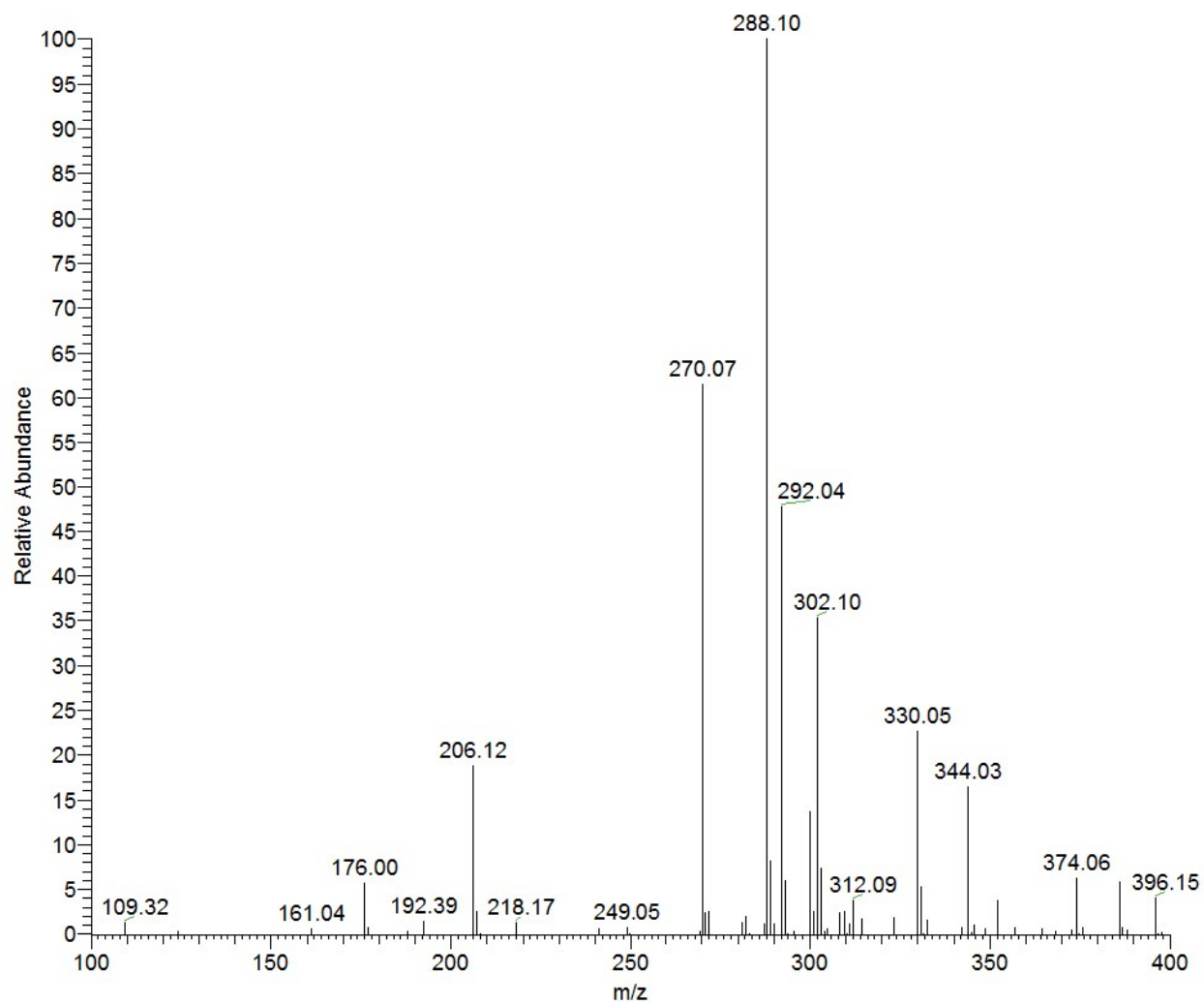


Fig. S2. ESI mass spectrum of tenofovir (TFV)

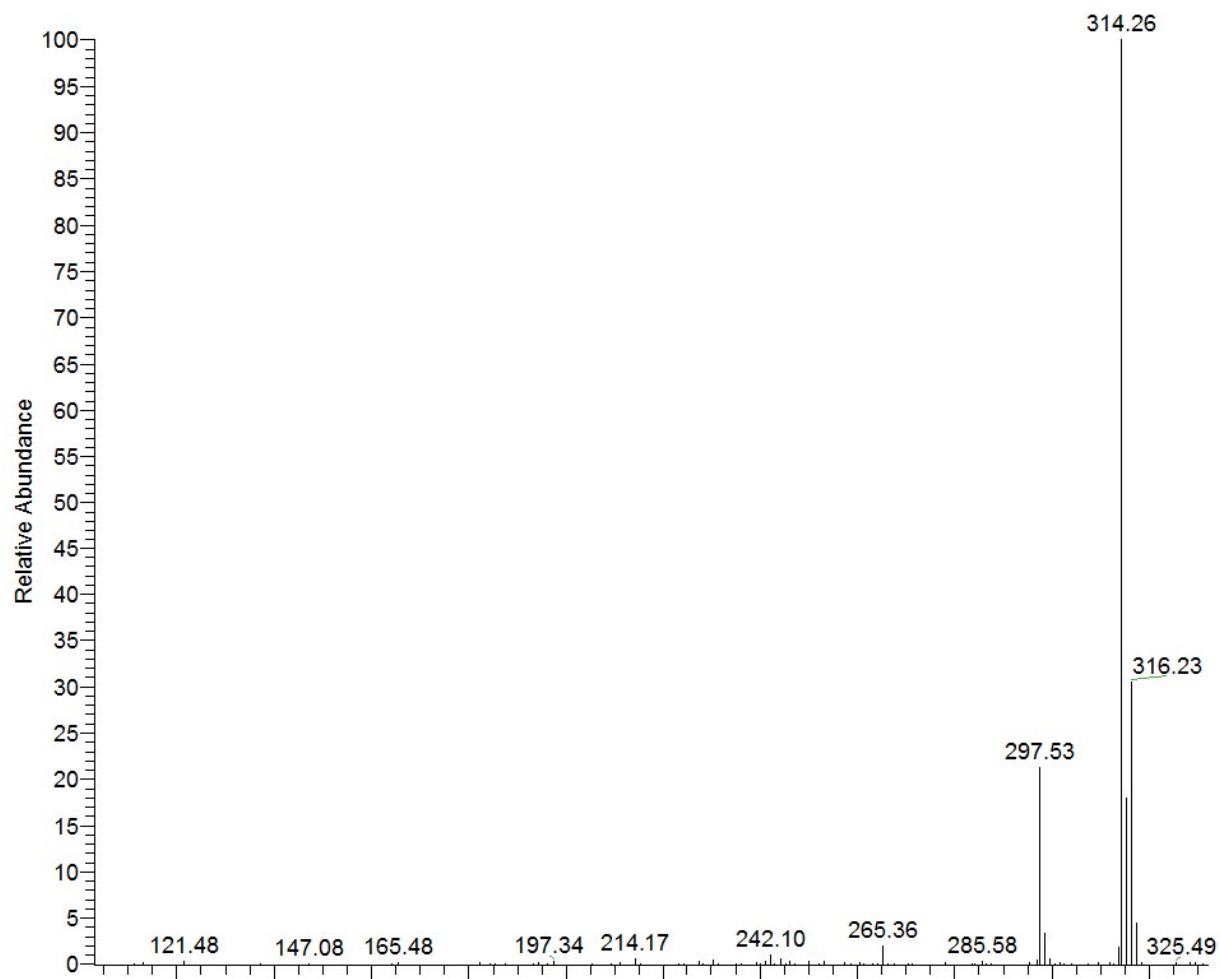


Fig. S3. ESI mass spectrum of efavirenz (EFZ)

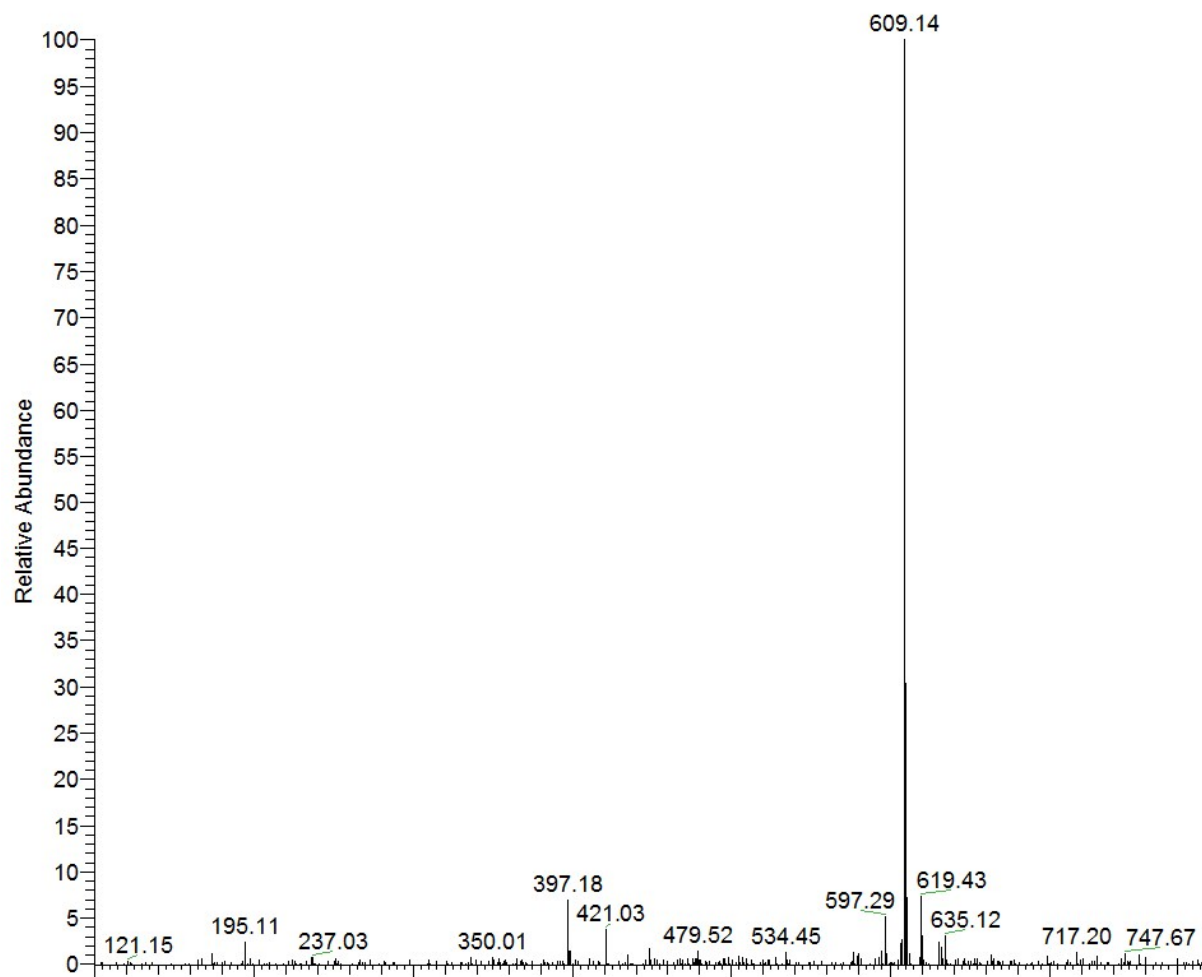


Fig. S4. ESI mass spectrum of reserpine (RSP)

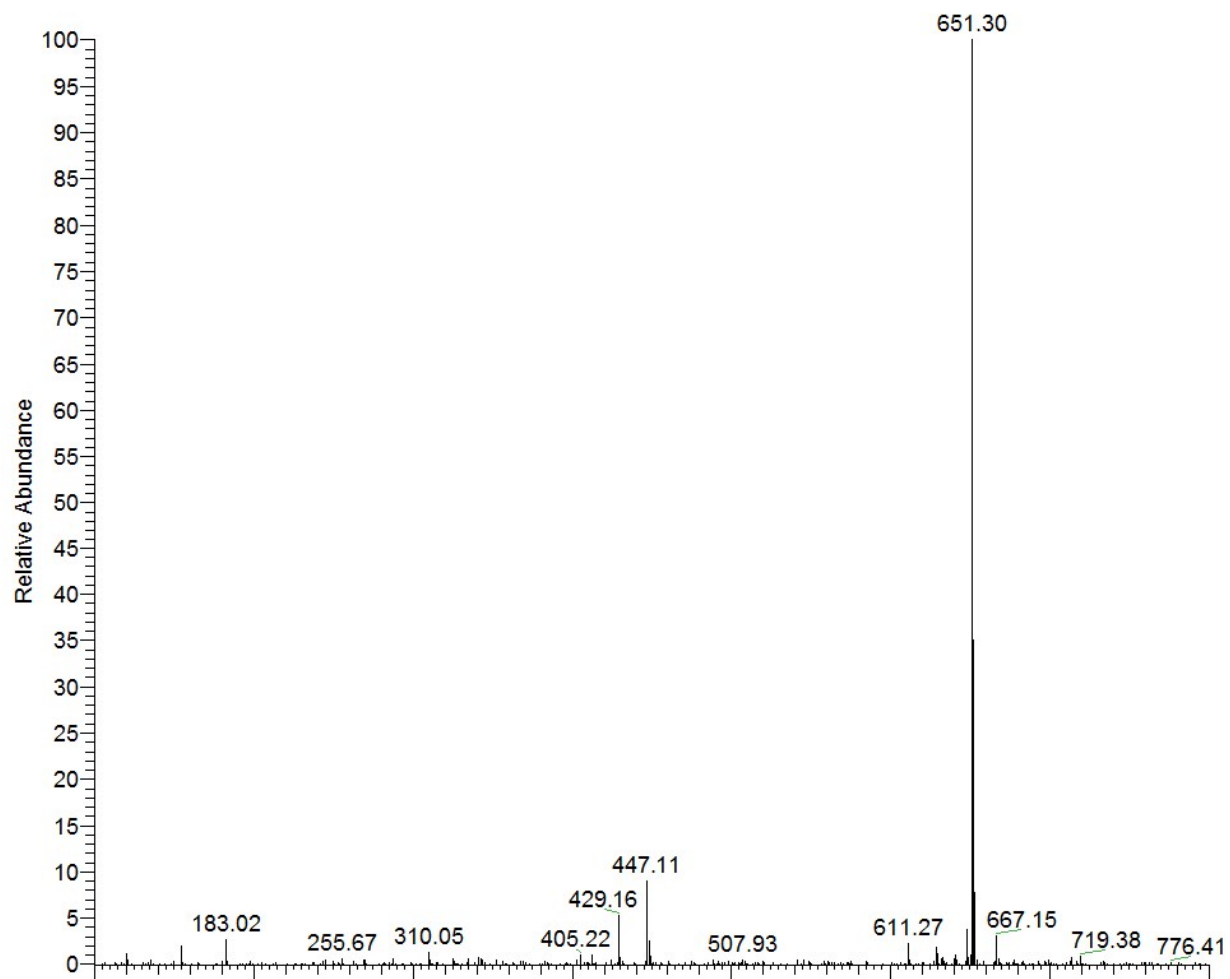


Fig. S5. ESI mass spectrum of lopinavir (LPV)

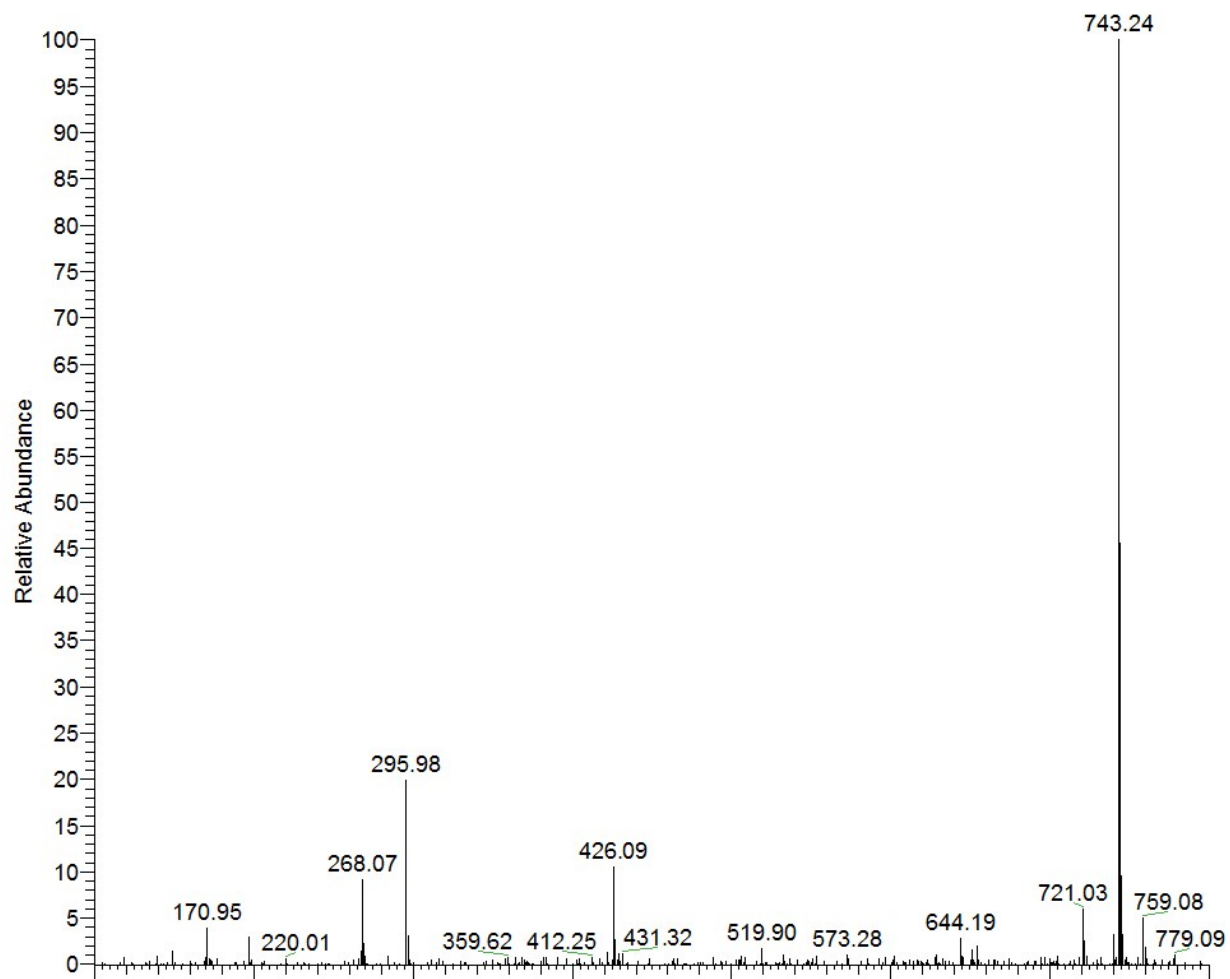


Fig. S6. ESI mass spectrum of rotinavir (RTV)