

## Supplemental Information

### **Signal-on electrochemical sensor for two analytes detection based on the conformation change of DNA probes**

Junchun Wang, Jinjin Guo, Junjun Zhang, Wenjuan Zhang, and Yuzhong Zhang\*

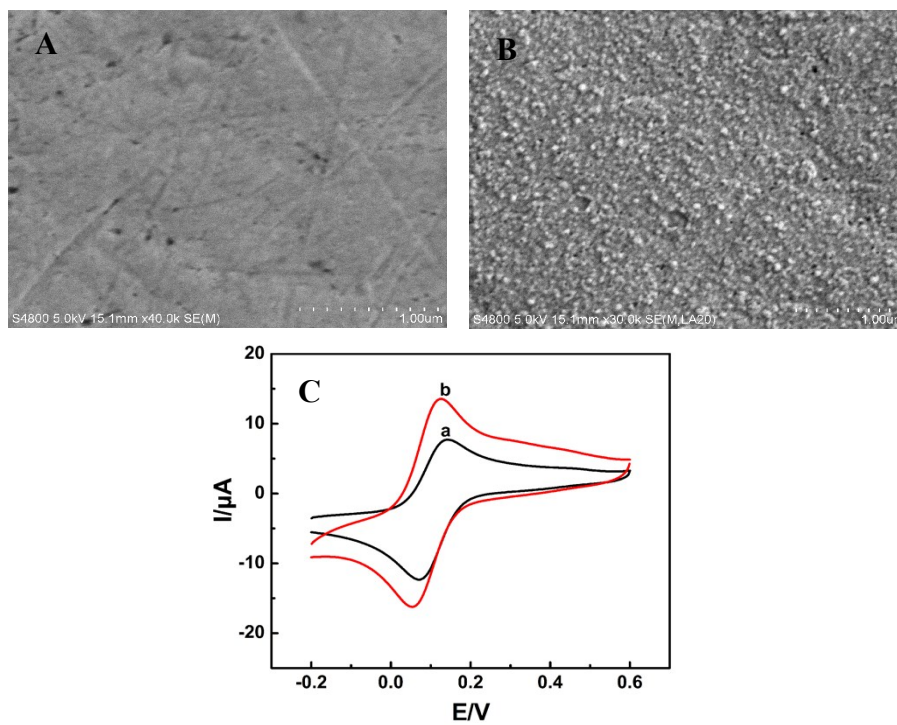
*College of Chemistry and Materials Science, Anhui Key Laboratory of Chem-Biosensing, Anhui*

*Normal University, Wuhu 241000, People's Republic of China*

---

\* Corresponding author. Tel.: +86 553 3869303; Fax: +86 553 3869303

E-mail address: [zhyz65@mail.ahnu.edu.cn](mailto:zhyz65@mail.ahnu.edu.cn) (Y. Zhang).



**Fig. S1** (A, B) SEM images of (A) bare Au electrode and (B) Au NPs modified electrode. (C) The CV curves of bare Au electrode (curve a) and Au NPs modified electrode (curve b) in the presence of 2.0 mM  $\text{K}_3[\text{Fe}(\text{CN})_6]$ .