

Supporting information

Encapsulated feeder cells within alginate beads for *ex vivo* expansion of cord blood-derived CD34⁺ cells

Xiuwei Pan, Qiong Sun, Haibo Cai*, Yun Gao*, Wensong Tan, Weian Zhang*

State Key Laboratory of Bioreactor Engineering; Shanghai Key Laboratory of Functional Materials Chemistry, East China University of Science and Technology, 130 Meilong Road, Shanghai 200237, China.

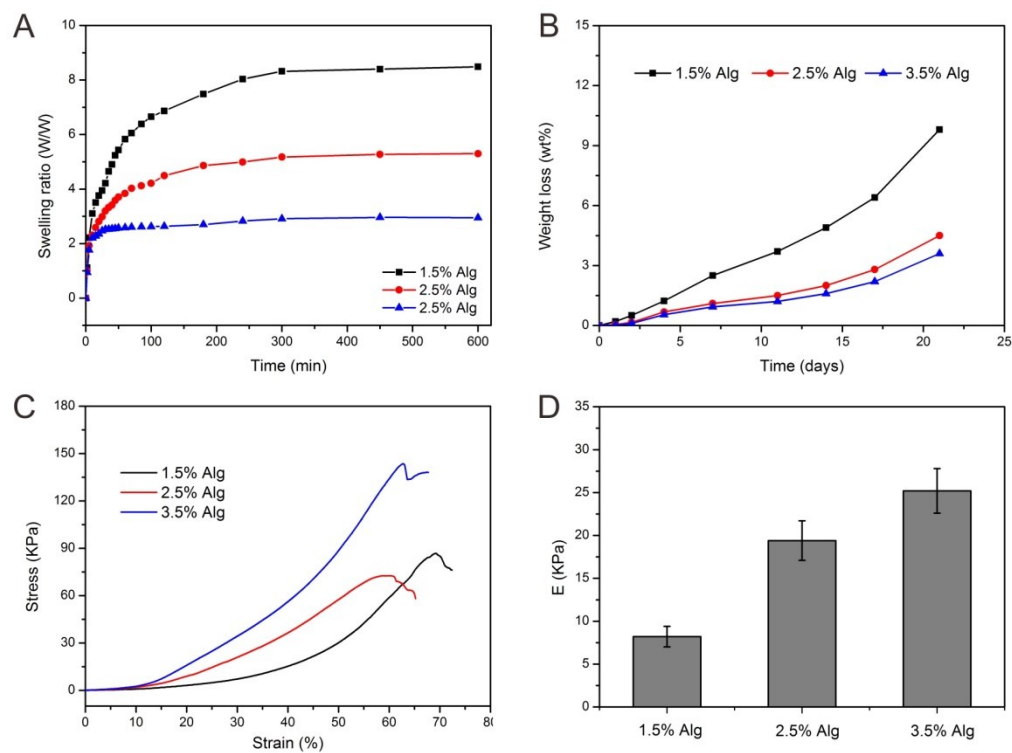


Fig. S1 (A) Swelling behavior of alginate beads. (B) Weight loss of alginate beads during 21-day incubation. (C) Stress-strain curves and (D) elastic modulus of alginate beads from uniaxial compression. Results were mean \pm SD, $n = 3$ replicates per experiment.

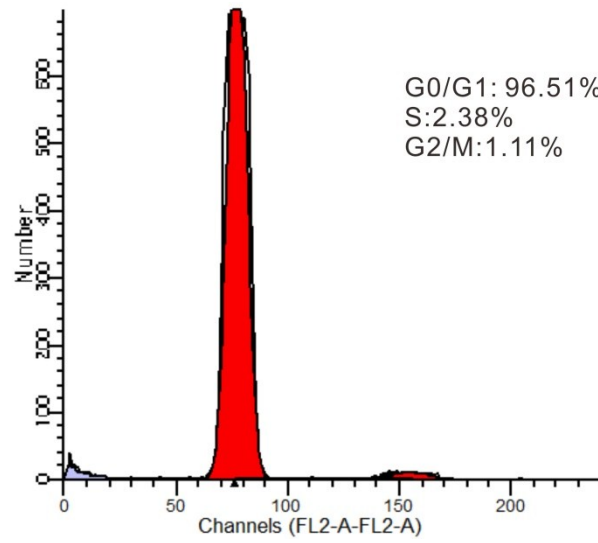


Fig. S2 Representative cell cycle distribution graph of uncultured CD34⁺ cells.

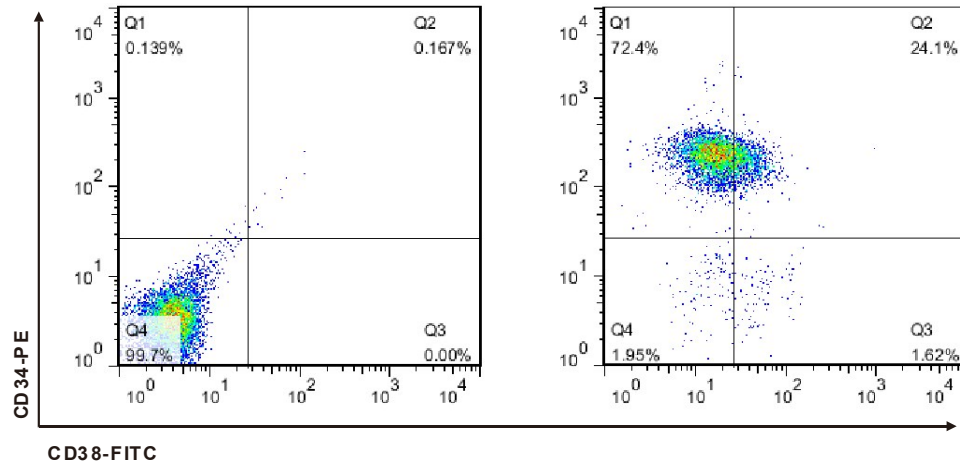


Fig. S3 Representative density plot of CD34⁺CD38⁻ phenotype of uncultured CD34⁺ cells.