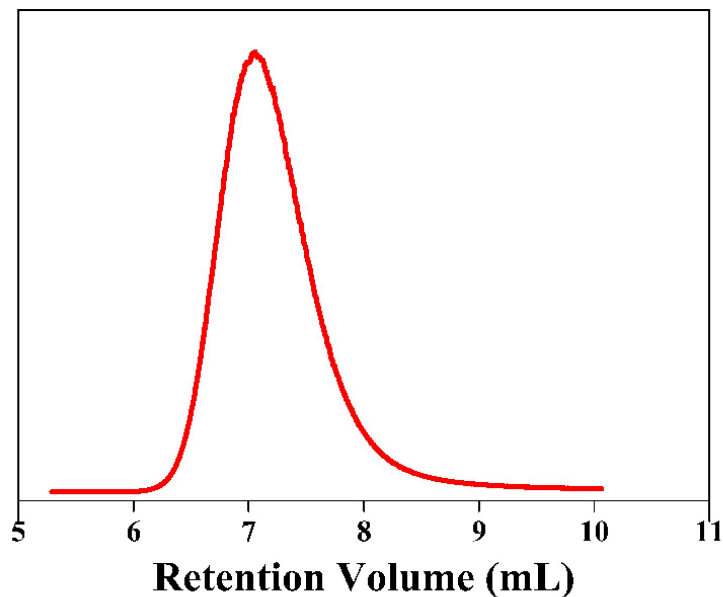


## Supporting Information

**Table S1.** Preparation of PNAGA-PAAm hydrogels with varied NAGA/AAm ratios and monomer concentrations.

Sample	Ratio (NAGA/AAm)	Concentration	H <sub>2</sub> O ( $\mu$ L)	Gel or solution
PNAGA-PAAm-3-15	3/1	15%	850	Gel
PNAGA-PAAm-5-15	5/1		850	Gel
PNAGA-PAAm-7-15	7/1		850	Gel
PNAGA-PAAm-9-15	9/1		850	Gel
PNAGA-PAAm-5-10	5/1	10%	900	Gel
PNAGA-PAAm-5-15		15%	850	Gel
PNAGA-PAAm-5-20		20%	800	Gel



**Fig. S1** Gel permeation chromatography (GPC) elution trace of PNAGA-PAAm-5-15.