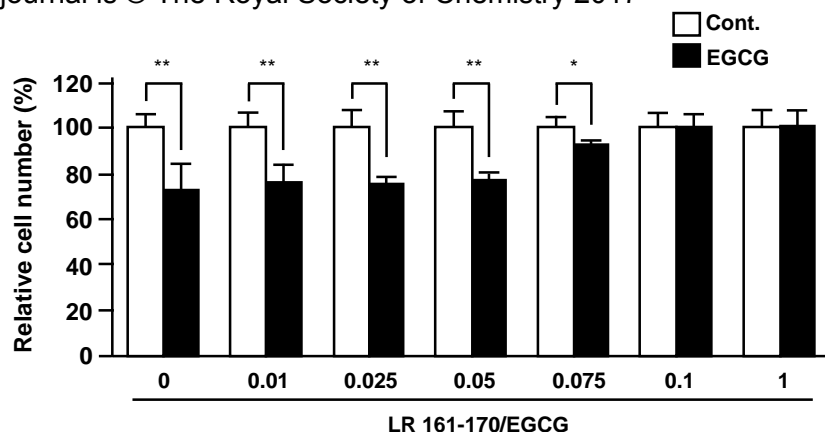
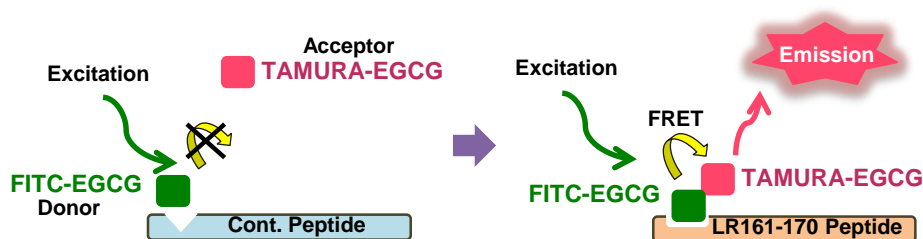


A



B



C

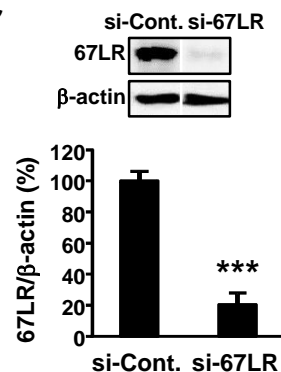


Fig.S1 EGCG binds to 67LR as an oligomer form.

A. The neutralising activity of LR 161-170 on the EGCG-induced inhibition of cancer cell growth. EGCG plus peptide (closed bar) are shown as the cell number relative to EGCG-nontreated control (open bar). Data, means \pm S.D. ($n = 3$). *, $p < 0.05$, **, $p < 0.01$. **B.** The illustration of FRET system. **C.** The expression of 67LR on si-Cont. or si-67LR transfected HEK293 cells.