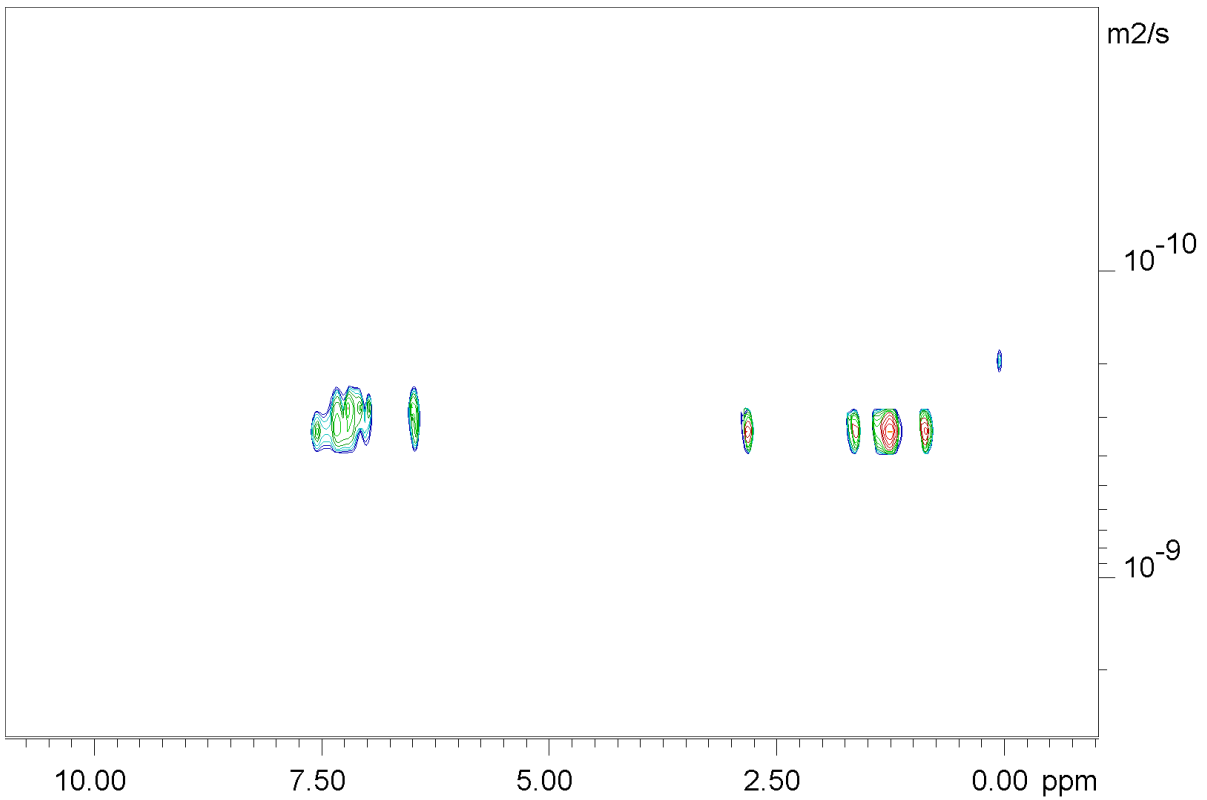
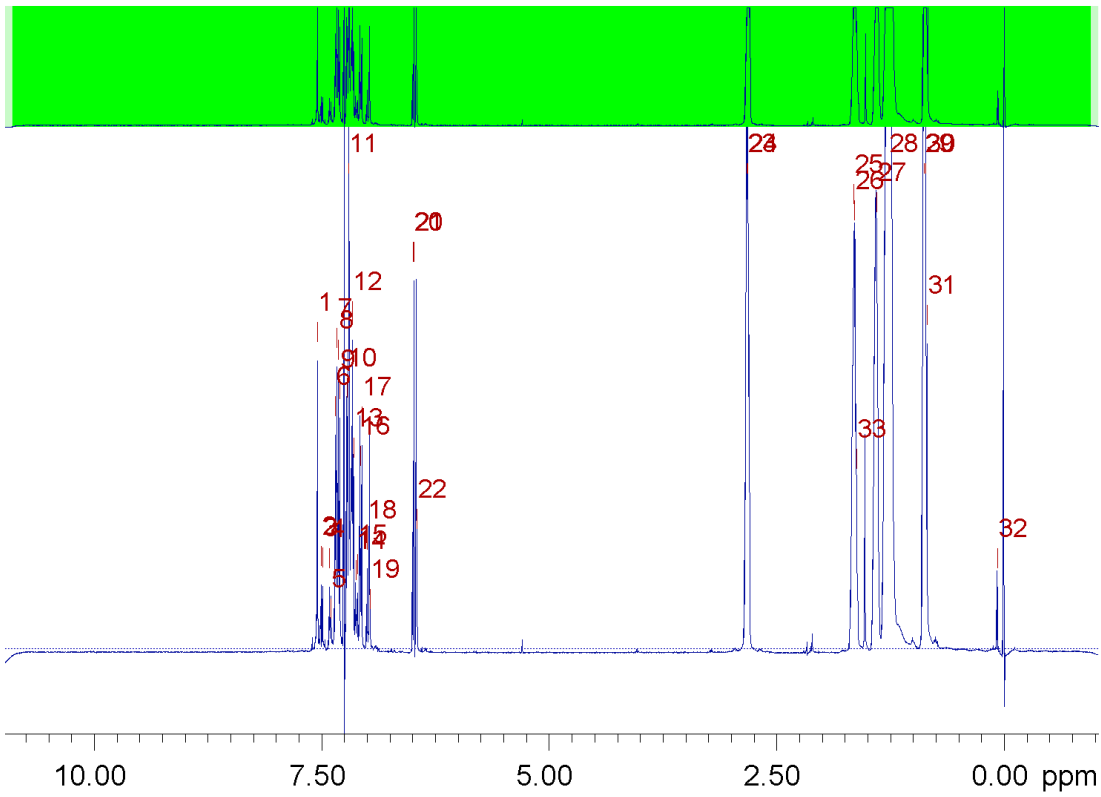




## • Diffusion Analysis

sample name:	MK85
Description/Title:	Diffusion of MK85 in CDCl3
Origin:	dave davidson
Date of preparation:	04 / 2016
Lab Book Number:	000



Fitted function:	$f(x) = A * \exp(-D * x^2 * \gamma^2 * \text{littleDelta}^2 / (\text{bigDelta} - \text{littleDelta}/3) * 10^4)$
used gamma:	26752 rad/(s*Gauss)
used little delta:	0.0040000 s
used big delta:	0.094070 s
used gradient strength:	variable
Random error estimation of data:	RMS per spectrum (or trace/plane)
Systematic error estimation of data:	worst case per peak scenario
Fit parameter Error estimation method:	from fit using arbitrary y uncertainties
Confidence level:	95%
Used peaks:	automatically picked peaks
Used integrals:	peak intensities
Used Gradient strength:	all values (including replicates) used

Peak name	F2 [ppm]	D [m2/s]	error
1	7.545	3.17e-10	1.838e-11
2	7.507	3.12e-10	2.216e-11
3	7.489	3.24e-10	4.485e-12
4	7.413	3.29e-10	5.600e-12
5	7.395	3.23e-10	9.588e-12
6	7.348	3.01e-10	3.102e-12
7	7.334	3.13e-10	1.809e-12
8	7.316	3.10e-10	4.070e-12
9	7.301	3.03e-10	6.062e-12
10	7.222	3.26e-10	5.614e-12
11	7.202	3.00e-10	5.214e-12
12	7.164	3.02e-10	1.788e-12
13	7.149	3.05e-10	4.036e-12
14	7.125	3.23e-10	1.012e-11
15	7.108	3.17e-10	1.021e-11
16	7.076	2.94e-10	1.140e-11
17	7.058	2.98e-10	2.373e-12
18	6.999	3.24e-10	2.305e-12
19	6.970	2.94e-10	5.711e-12
20	6.498	3.16e-10	3.782e-12
21	6.483	2.92e-10	7.890e-12
22	6.457	3.04e-10	1.141e-11
23	2.828	3.17e-10	2.620e-12
24	2.816	3.15e-10	2.527e-12
25	1.654	3.13e-10	3.220e-12
26	1.640	3.13e-10	2.638e-12
27	1.402	3.14e-10	6.125e-12
28	1.267	3.26e-10	6.919e-12
29	0.880	3.14e-10	2.331e-12
30	0.859	3.13e-10	1.554e-12



Peak name	F2 [ppm]	D [m <sup>2</sup> /s]	error
31	0.845	3.21e-10	1.564e-11
32	0.073	1.97e-10	1.368e-11
33	1.622	3.08e-10	2.067e-12



### Current fit display

