

Electronic Supplementary Information (ESI)

Controllably Incoherent Growth of Surface toward Gold Nanocrystals with Regular Multi-bumps.

Tengjiao Liu,^a Wei Guo,^c Minghui Liang,^{b,*} Yongzhong Bian,^{a,*} Peng Jiang^{b,*}

^a Beijing Key Laboratory for Science and Application of Functional Molecular and Crystalline Materials,
Department of Chemistry, University of Science and Technology Beijing, Beijing 100083, China.

^b CAS Center for Excellence in Nanoscience, National Center for Nanoscience and Technology, No.11
Beiyitiao Zhongguancun, Beijing 100190, China.

^c National Research Centre for Geoanalysis, *Beijing, 100037, China.*

* E-mail: liangmh@nanocr.cn, yzbian@ustb.edu.cn, pjiang@nanocr.cn

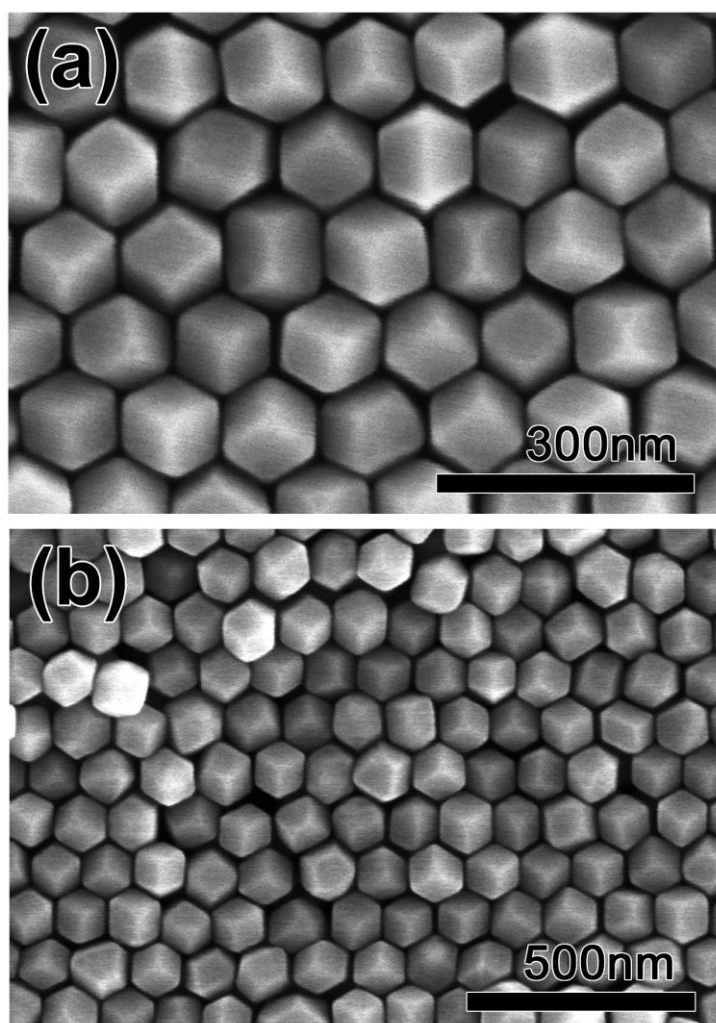


Fig. S1 SEM images of synthesized seeded RD Au nanoparticles.

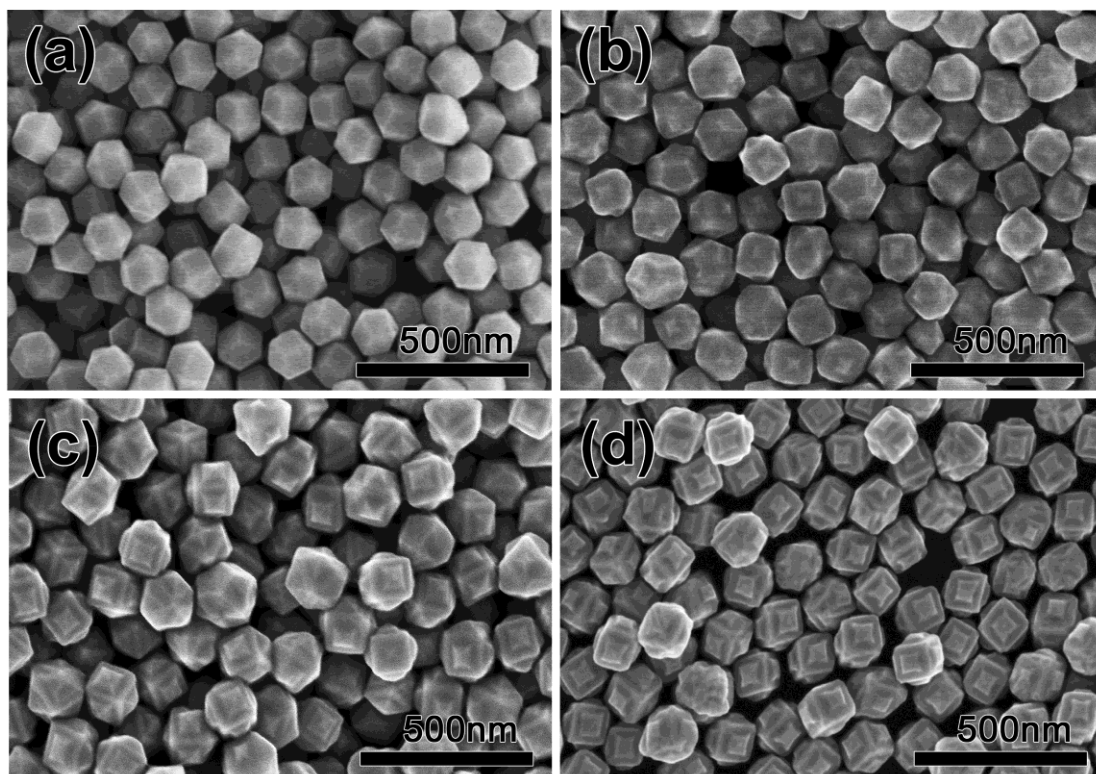


Fig. S2 SEM images of (a) IP1, (b) IP2, (c) IP3 and (d) CHB.

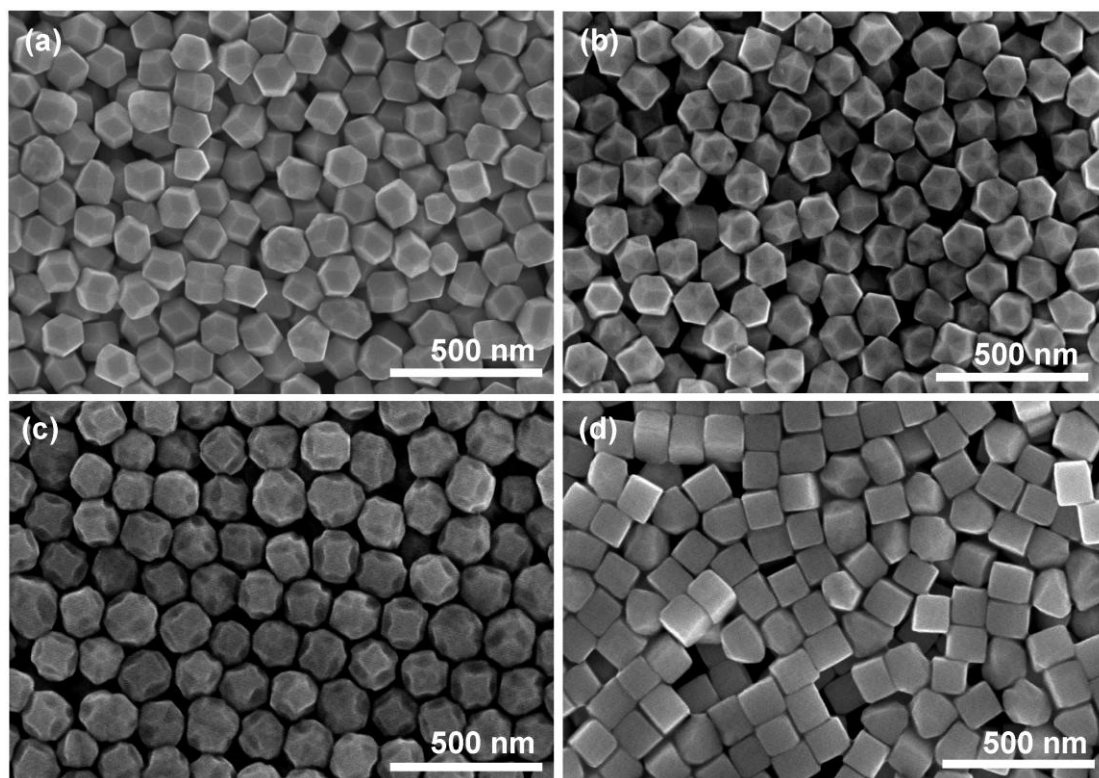


Fig. S3 SEM images of the obtained nanoparticles in (a) experiment 2, (b) experiment 3, (b) experiment 4 and (d) experiment 5

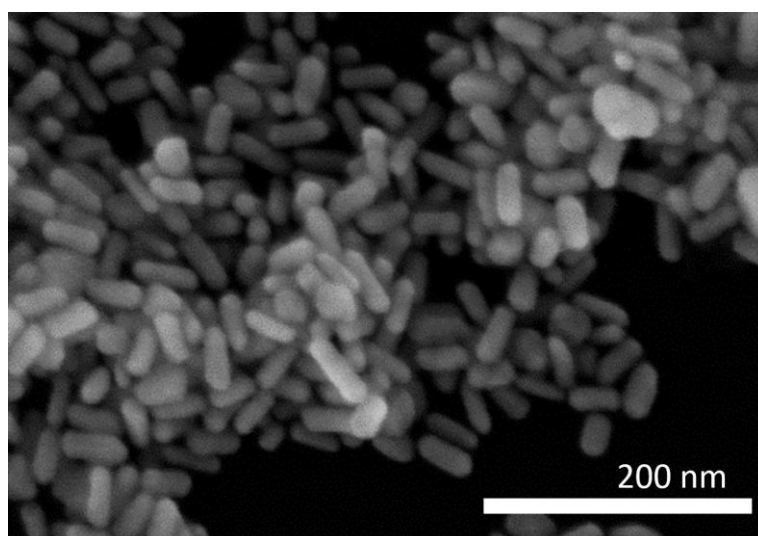


Fig. S4 SEM image of prepared Au nanorods.

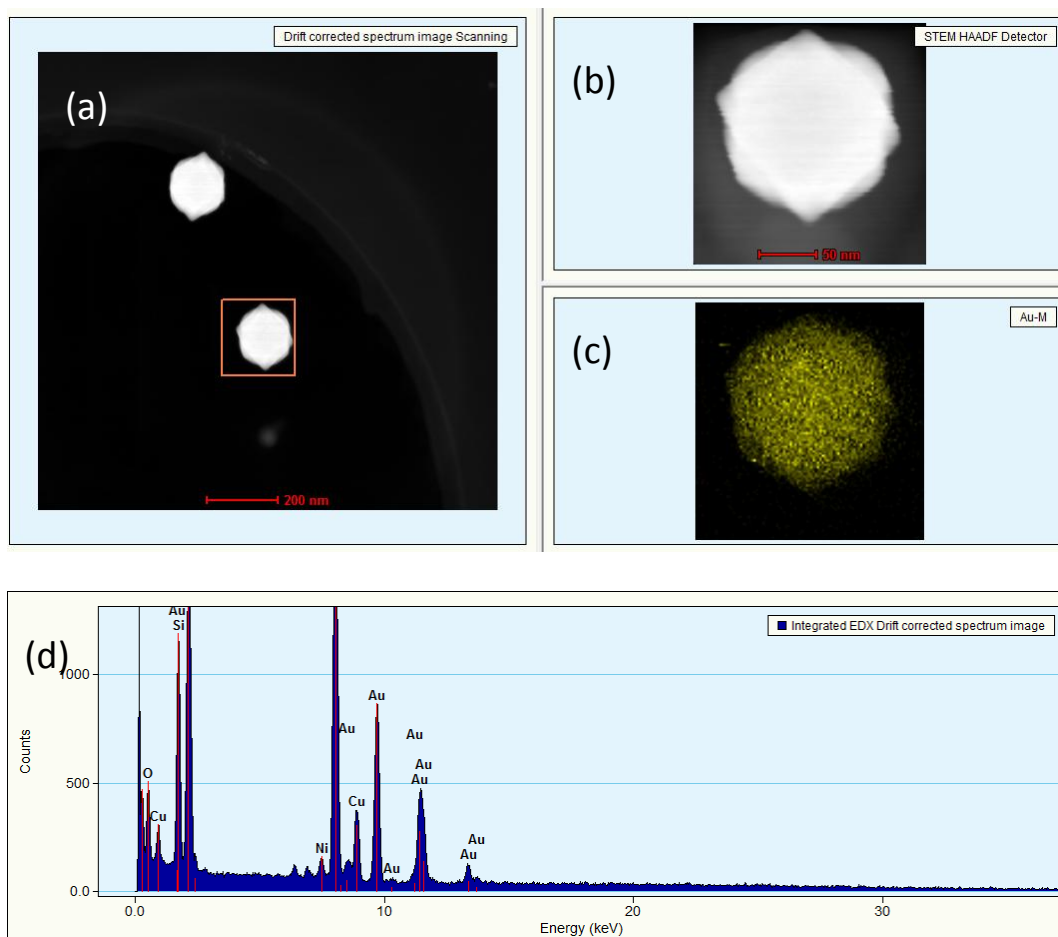


Fig. S5 (a) The drift corrected spectrum image of bumped Au nanoparticles; (b) the STEM image of a single bumped Au nanoparticle, and (c) the elemental mapping of Au in the selected area in (a); (d) the EDX spectrum of the bumped Au nanoparticles.