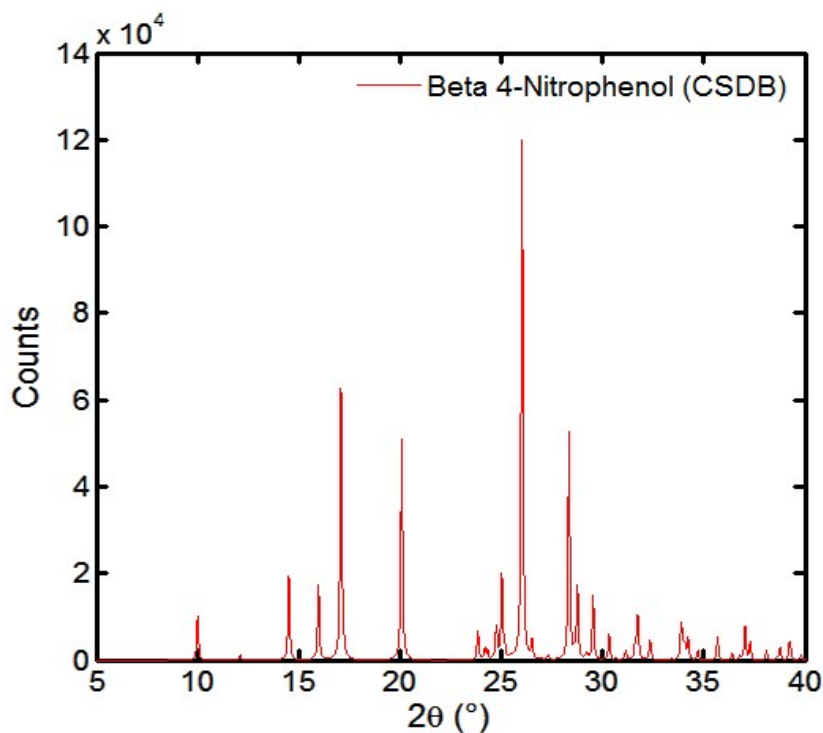
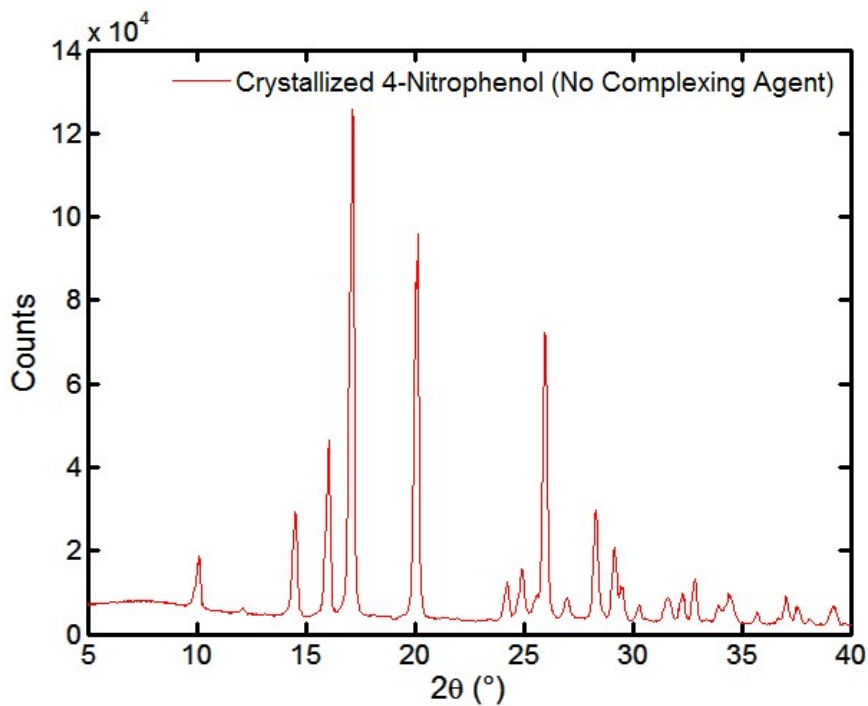


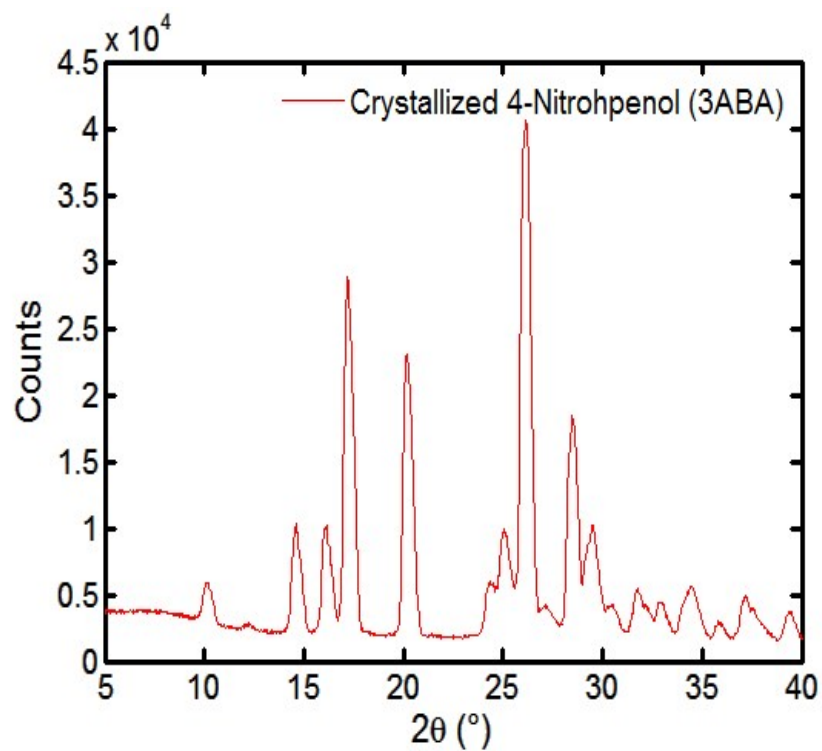
**Supplemental Information:**



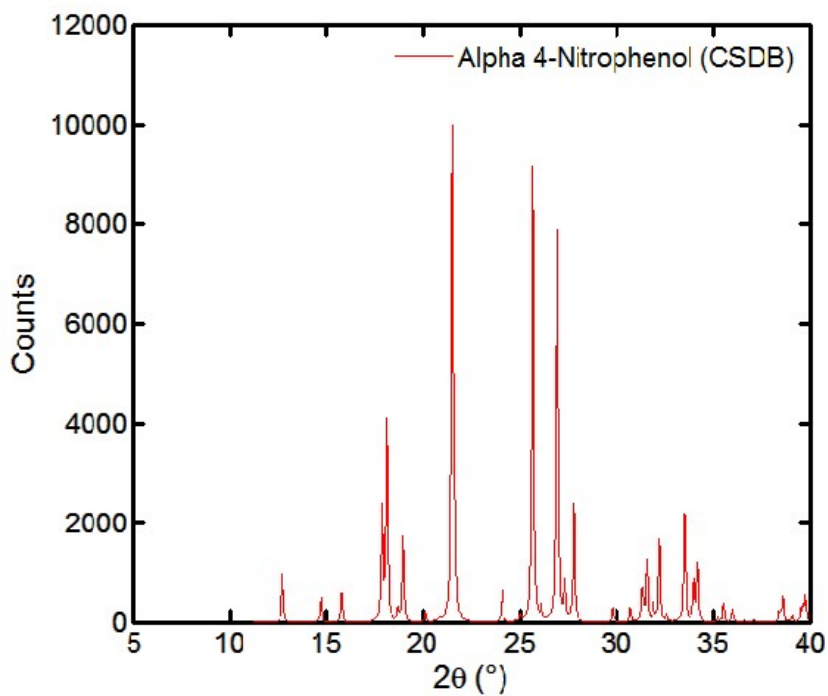
**Fig 1.S** Theoretical XPRD for the beta polymorph of 4NP, obtained from the Cambridge Structural Database.



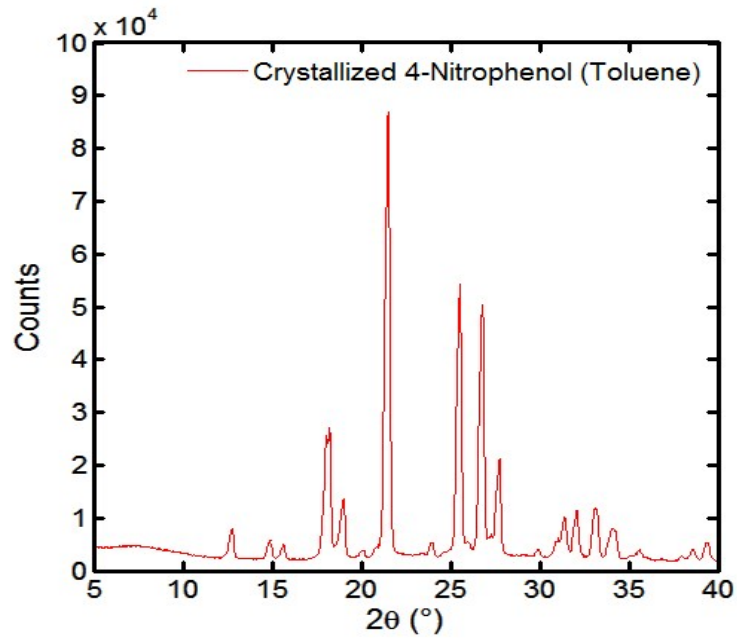
**Fig 2.S** Experimentally obtained XPRD of 4NP, taken from a sample crystallized in water with no complexing agent.  
The graph matches with that of the beta form in Fig 1.



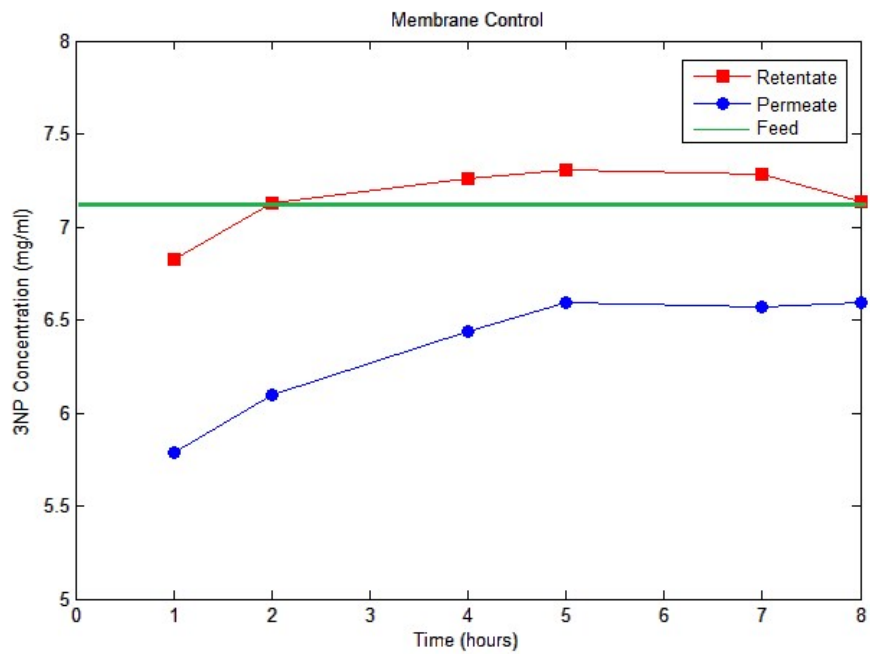
**Fig 3.S** Experimentally obtained XPRD of 4NP, taken from a sample crystallized in water with 3ABA as the complexing agent. The graph matches with that of the beta form in Fig 1.



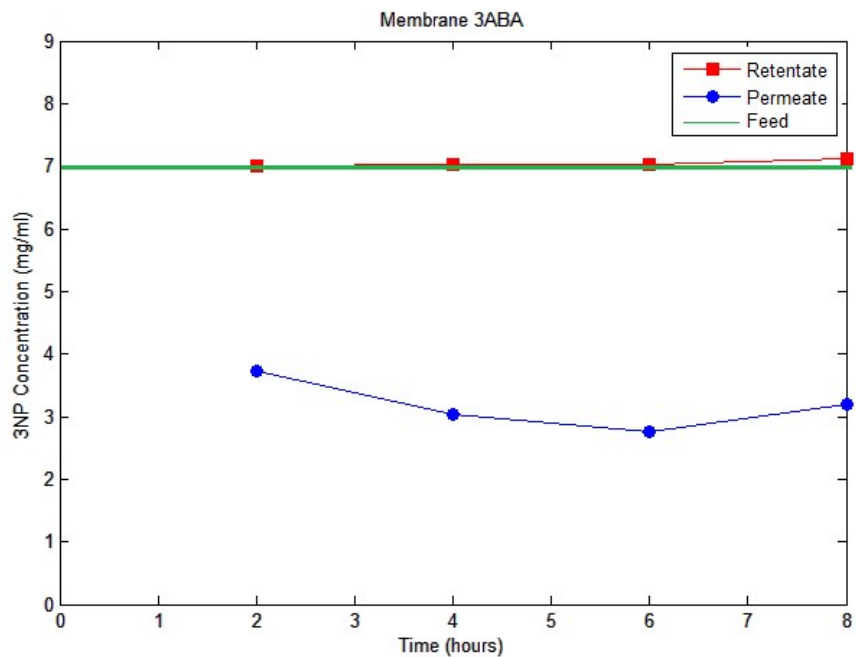
**Fig 4.S** Theoretical XPRD for the alpha polymorph of 4NP, obtained from the Cambridge Structural Database.



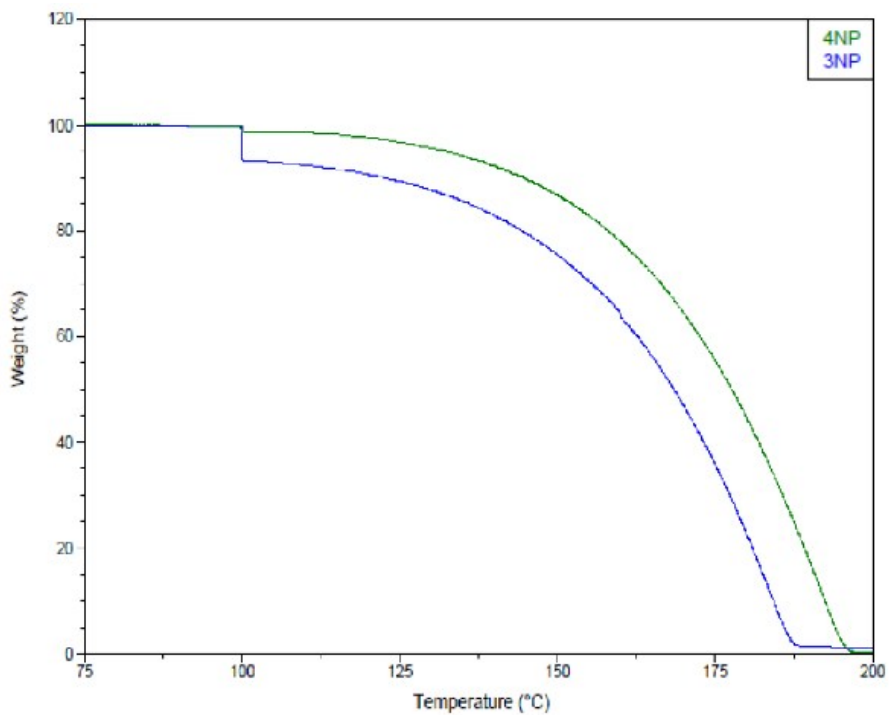
**Fig 5.S** Experimentally obtained XPRD of 4NP, taken from a sample crystallized in toluene with no complexing agent. The graph matches with that of the alpha form in Fig 4.



**Fig 6.S** Evolution of the retentate and permeate concentrations over time in the control membrane experiment (no complexing agent used).



**Fig 7.S** Evolution of the retentate and permeate concentrations over time in the 3ABA+3NP membrane experiment.



**Fig 8.S** TGA curve of 3NP and 4NP. The curves are overlapped to show the differences in mass loss between the two compounds.