

Supporting Information for
Functionalized calcium silicate nanofibers with hierarchical structure
derived from oyster shells and its application in heavy metal ions removal

Weijie You^{a,b}, Mingzhu Hong^{a,b}, HaiFeng Zhang^{a,b}, Qiuping Wu^{a,b},
Zanyong Zhuang^{a,b*}, Yan Yu^{a,b*}

^a Key Laboratory of Eco-materials Advanced Technology (Fuzhou University), Fujian Province University, China

^b College of Materials Science and Engineering, Fuzhou University, New Campus, Minhou, Fujian Province 350108, China

*Corresponding author. Fax: +86 591 22866534;
E-mail address: zyzhuang@fzu.edu.cn, yuyan_1972@126.com

EDS analysis of CSH

The EDS analysis of CSH was showed in Fig.S1. The peaks of Ca. Si. O. C can be observed. It indicates that the CSH is a mixture of calcium silicate hydrates and calcium carbonate. The peak intensity of C is much weak shows a low content of calcium carbonate. In other words, the CSH is mainly composed of calcium silicate.

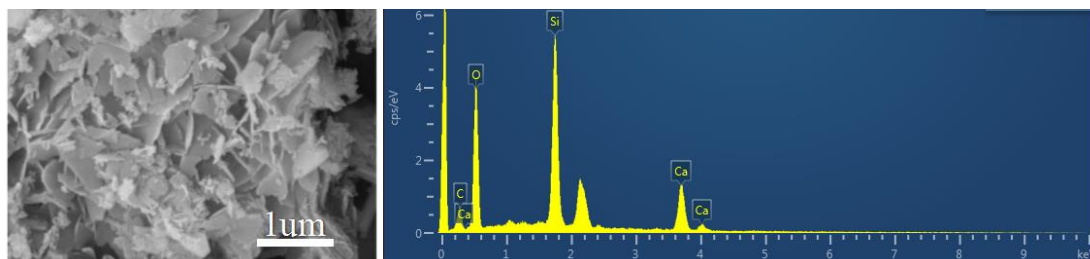


Figure S1. The SEM image and EDS analysis of CSH.