

Supplementary Information:

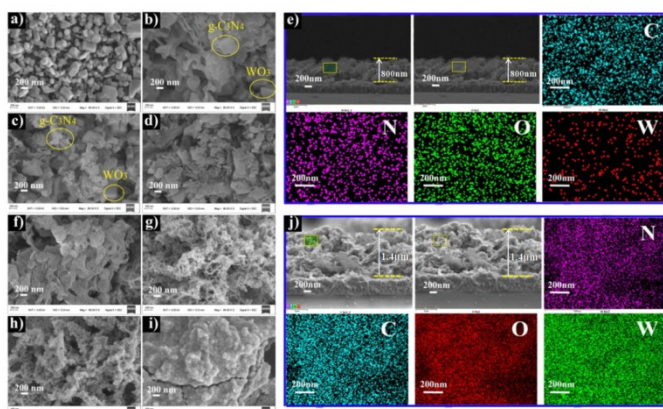


Fig. S1 SEM images of pure WO₃ nanorods (a); WO₃/g-C₃N₄ heterojunction film with various electrophoretic deposition time for g-C₃N₄: 10 s (b), 40 s (c) and 240 s (d). SEM images of pure g-C₃N₄ film (f); g-C₃N₄/WO₃ heterojunction film after 1 circle (g), 3 circles (h) and 9 circles (i) deposition of WO₃. (e) is cross-sectional view and elemental analysis for 10 s WO₃/g-C₃N₄ samples and (j) is that for 3 circles g-C₃N₄/WO₃ sample.