

Electronic Supplementary Information

Fabrication of Pd/P nanoparticle networks with high activity for methanol oxidation

Ke Zhang, Caiqin Wang, Duan Bin, Jin Wang, Bo Yan, Yukihide Shiraishi, and
Yukou Du*

College of Chemistry, Chemical Engineering and Materials Science, Soochow University, Suzhou
215123, P. R. China. E-mail: duyk@suda.edu.cn

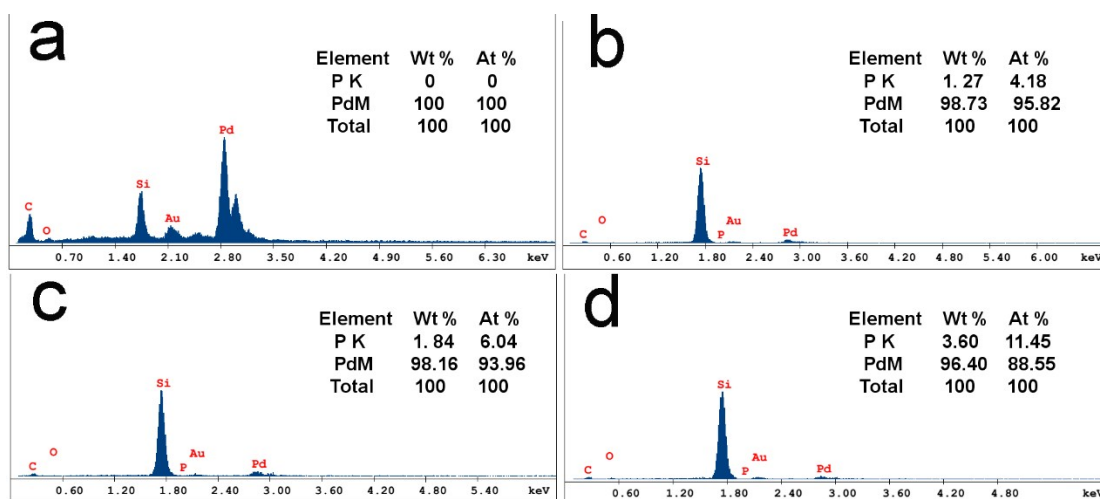


Figure S1: EDS patterns of the Pd (a), Pd₄/P₁ (b), Pd₂/P₁ (c) and Pd₁/P₁ (d). Slide glass were used as EDS substrates.

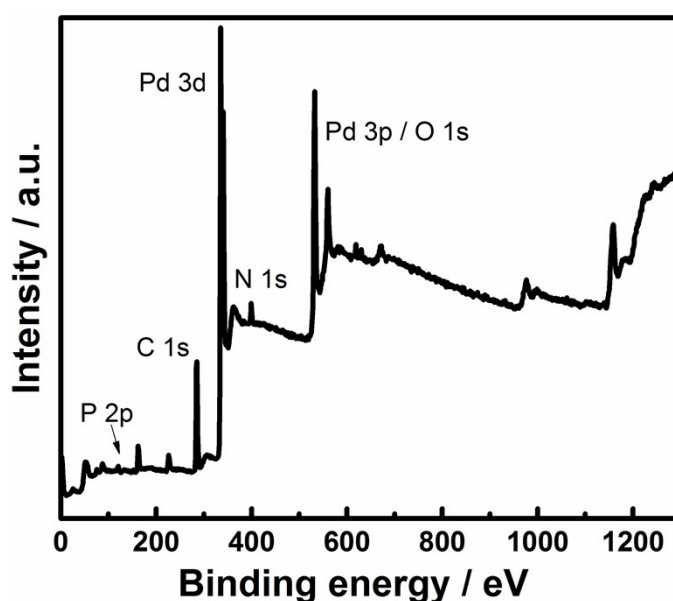


Figure S2: XPS spectra of the Pd₂/P₁.

Table 1 Summary of molar ratios for catalysts based on EDS and ICP analysis

Catalysts	Molar ratio by EDS (Pd/P)	Molar ratio by ICP (Pd/P)
Pd ₄ /P ₁	22.92/1	21.80/1
Pd ₂ /P ₁	15.56/1	15.64/1
Pd ₁ /P ₁	7.73/1	7.81/1