

Journal Name

ARTICLE

Supplementary material

Coordination of Zn^{2+} and Cu^{2+} to the membrane disrupting fragment of amylin

M. Rowinska-Zyrek^a

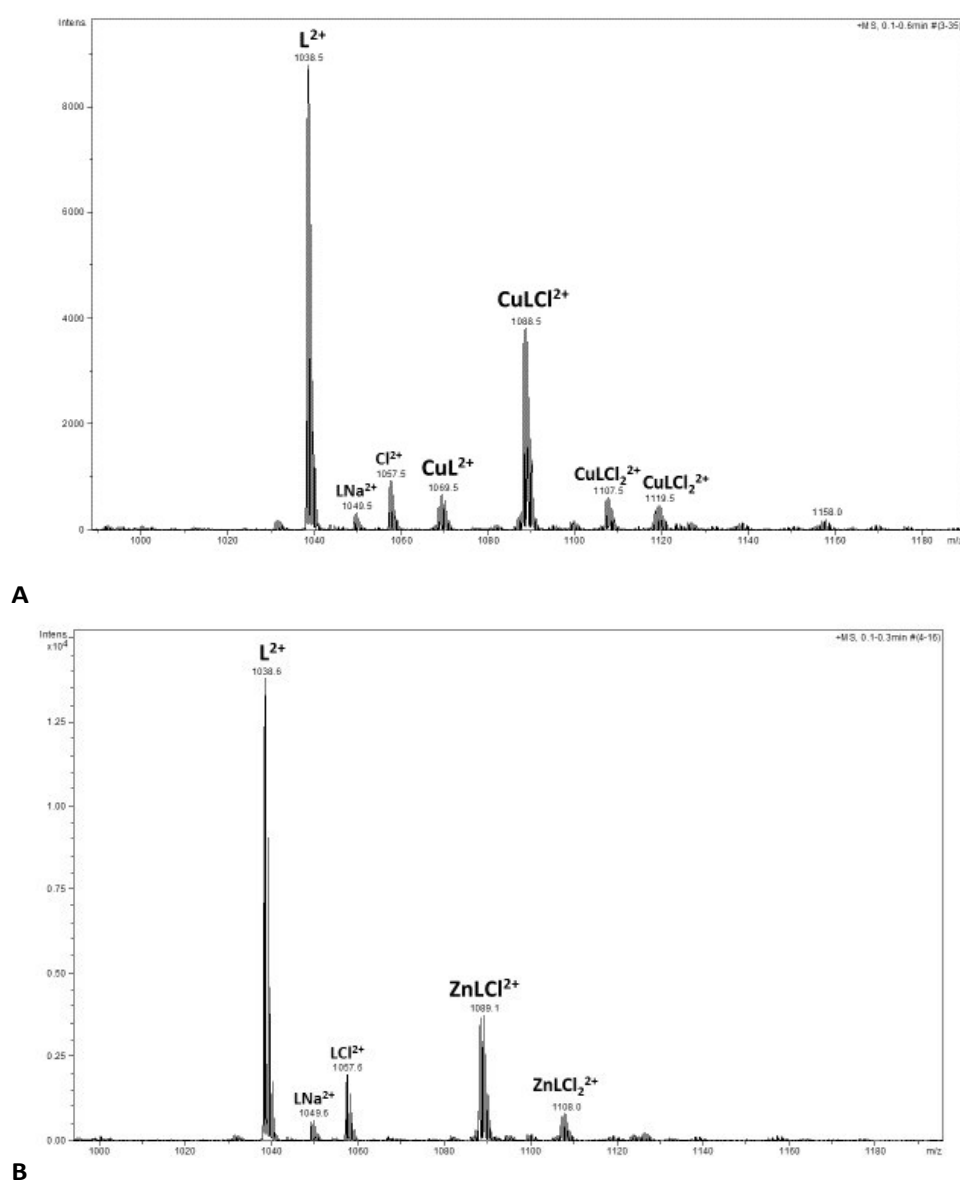


Figure S1. ESI-MS spectrum of A) Cu^{2+} -amylin₁₋₁₈ and B) Zn^{2+} -amylin₁₋₁₉ at pH 7.4. M/L molar ratio = 1:1

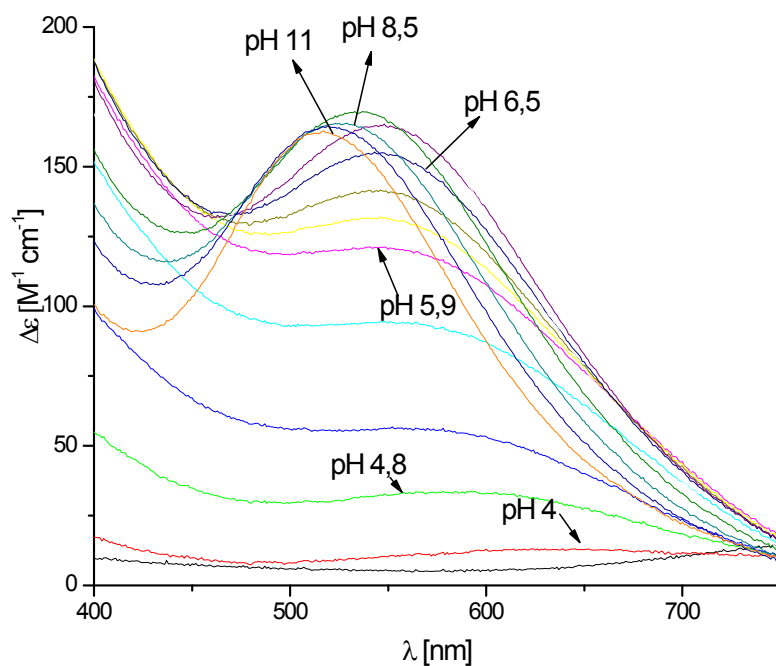


Figure S2. UV-Vis spectra of Cu²⁺-amylin₁₋₁₉ complexes recorded at different pH values. [Cu²⁺]=0.001 M; M/L molar ratio = 1:1.

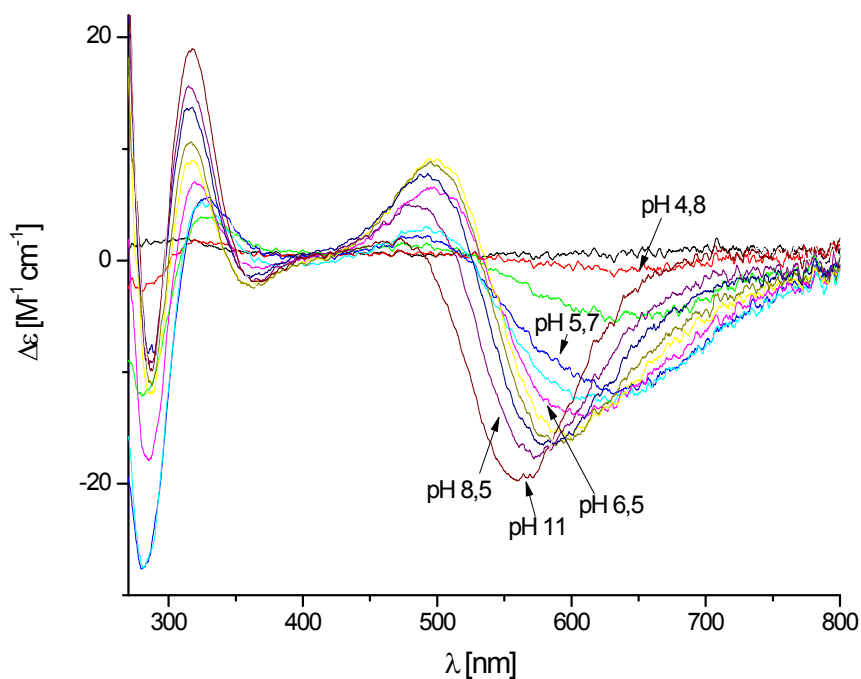


Figure S3. CD spectra of Cu²⁺-amylin₁₋₁₉ complexes recorded at different pH values. [Cu²⁺]=0.001 M; M/L molar ratio = 1:1.